

**BONDS and EURO UPDATE : GET READY we are poised for the BIG YIELD DROP! Germany leading the way AS BEFORE with a NEW futures high, CTA's will be adding to existing positions.**

**Add to that HUGE short positioning in US 10yrs and we are POISED for an EXPLOSIVE MOVE!**

**\*\* There are some VERY SIMPLE charts that are creating NEAR PERFECT formations for MUCH lower yields. \*\***

**As LABOURED previously the “writing is on the wall” ALREADY relating to direction, ALL warnings signs emanate from MONTHLY and QUARTERLY charts, that won't change.**

**The new month means many upside pierces are now ETCHED in history and some are now sub multi year MOVING AVERAGES.**

**Chart 7 US 10yr yield, DOES HISTORY REPEAT ITSELF, IF so yields are one way for a long while.**

US 30yr yield quarterly : We have already breached last months low and looks like we will FALL AWAY as this month progresses. The trend line is much closer now at 2.7025.

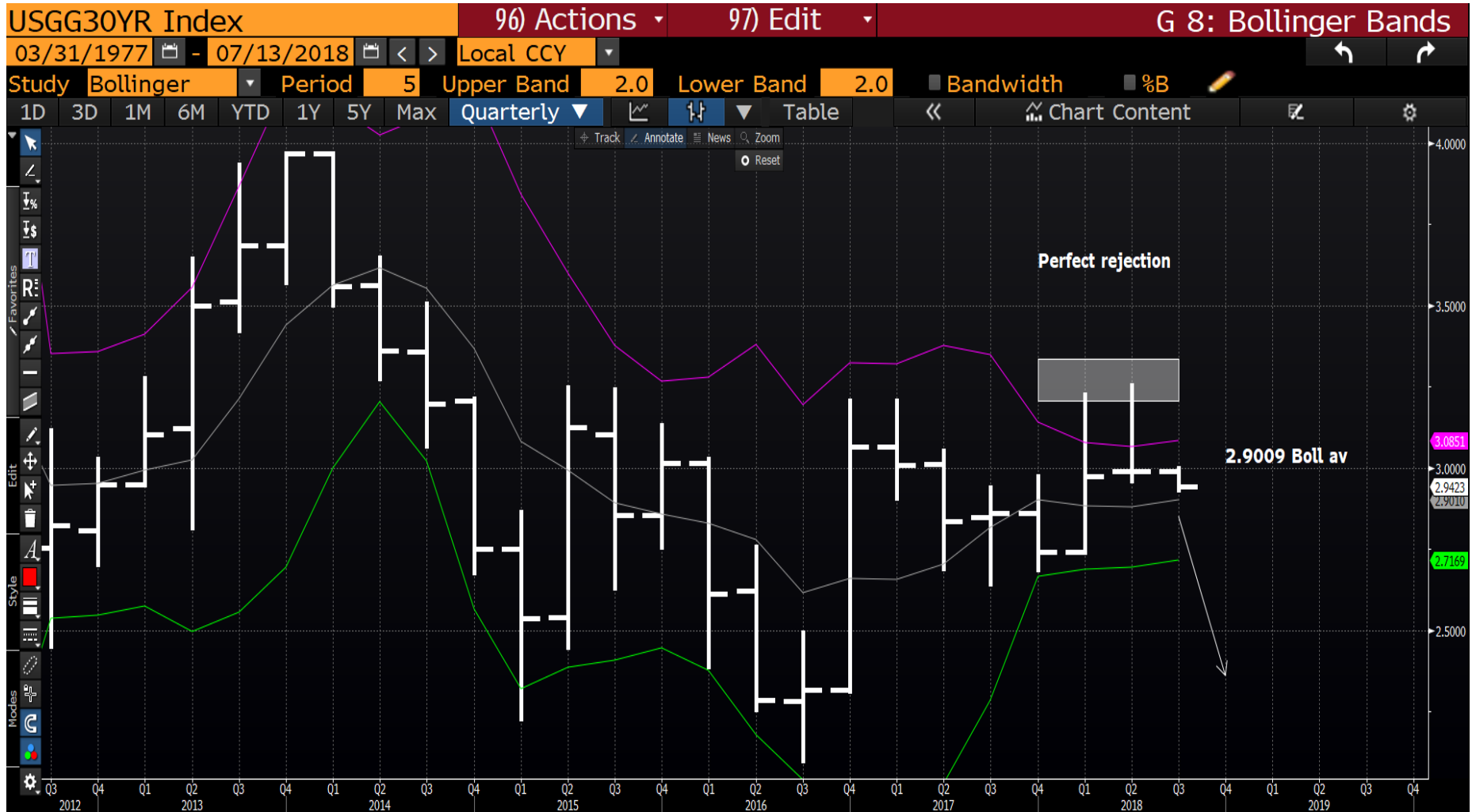


US 30yr yield quarterly : HISTORY IS ABOUT TO REPEAT ITSELF? ON ALL previous occasions yields have dropped and especially associated with DOUBLE UPSIDE PIERCES, as NOW! Any move sub the bollinger average 2.9009 will be very very negative.

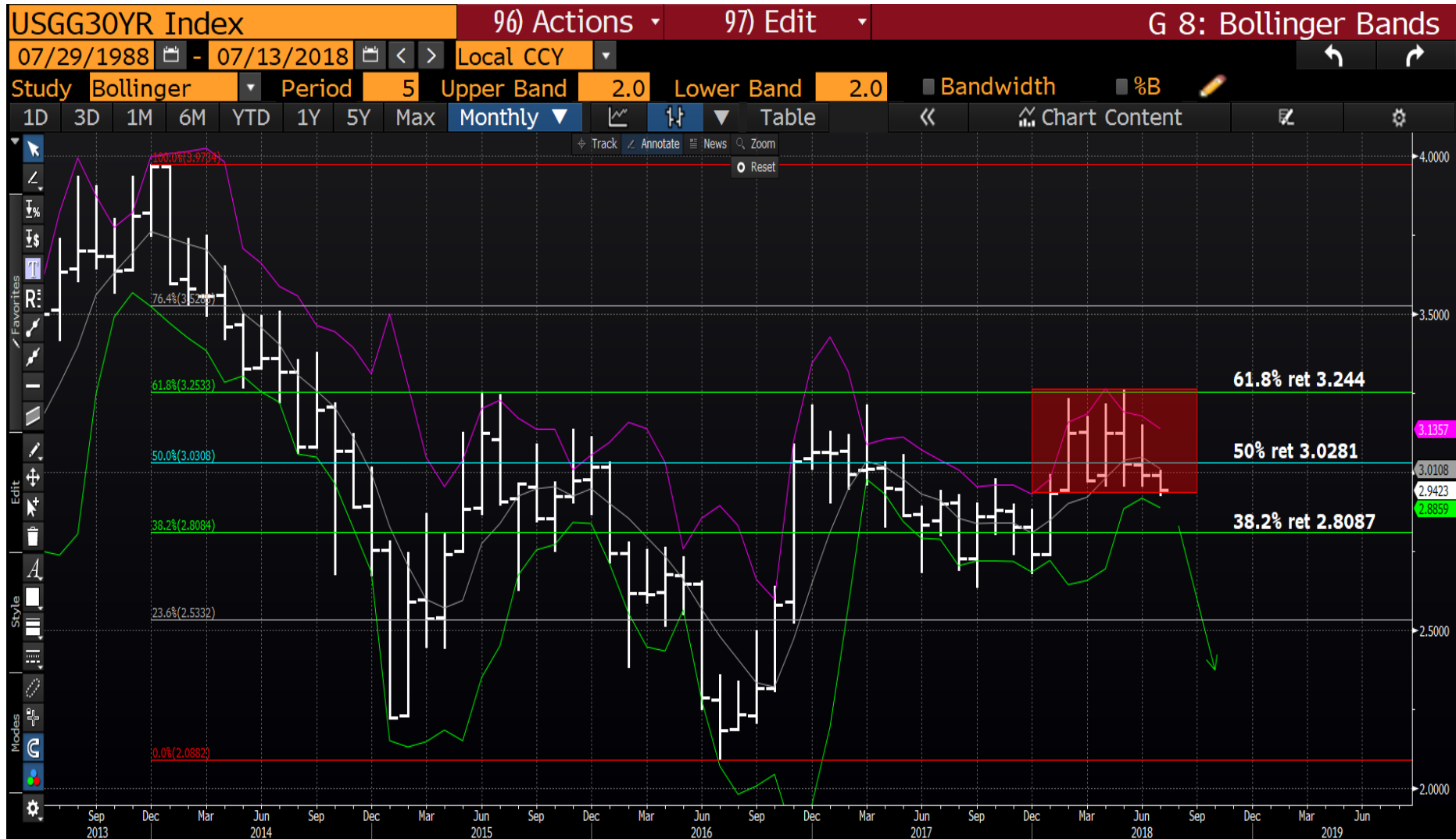


13/07/2018

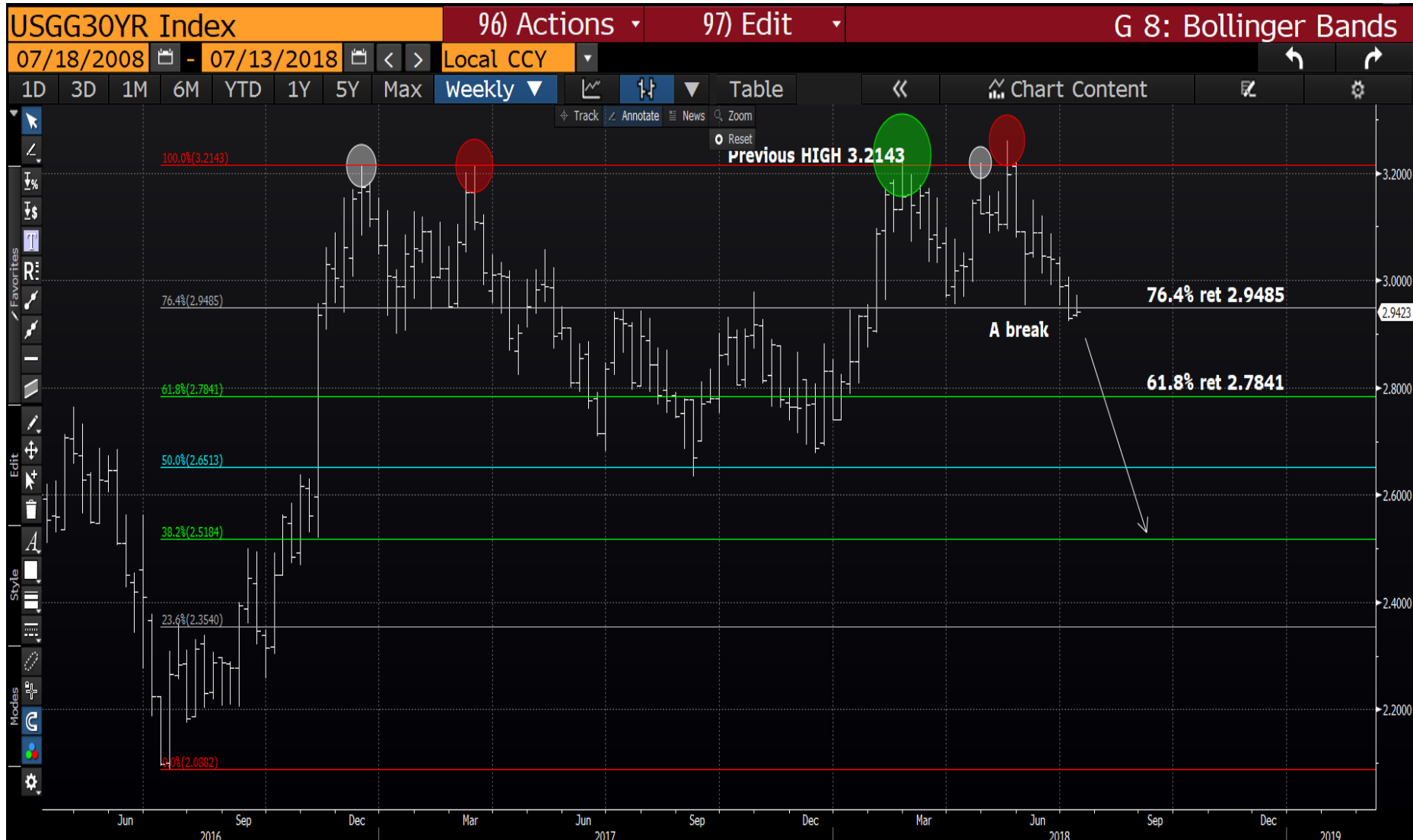
US 30yr yield quarterly : This “blow up” highlights 2 VERY nasty upside rejections and a breach of the 2.9009 bollinger average will help. The pierces will not go away so any yield bounce will be “window dressing” before the DROP.



US 30yr yield monthly : We HAVE breached the 5 month RANGE and are well on the way to much lower yields. THIS WILL ONLY BE THE START! Sub 2.8087 seems an EASY and DISTINCT prospect.



US 30yr yield weekly : We are edging lower but as yet the big stops have alluded us. A close sub the 76.4% ret 2.9485 will be helpful.



13/07/2018

US 10yr yield quarterly : The RSI dating back to 1984 is not going to go away, thus the BIAS still remains for lower yields. Another PERFECT YIELD FAILURE is forming! We are now sub the moving average 2.8474 poised to head much lower.



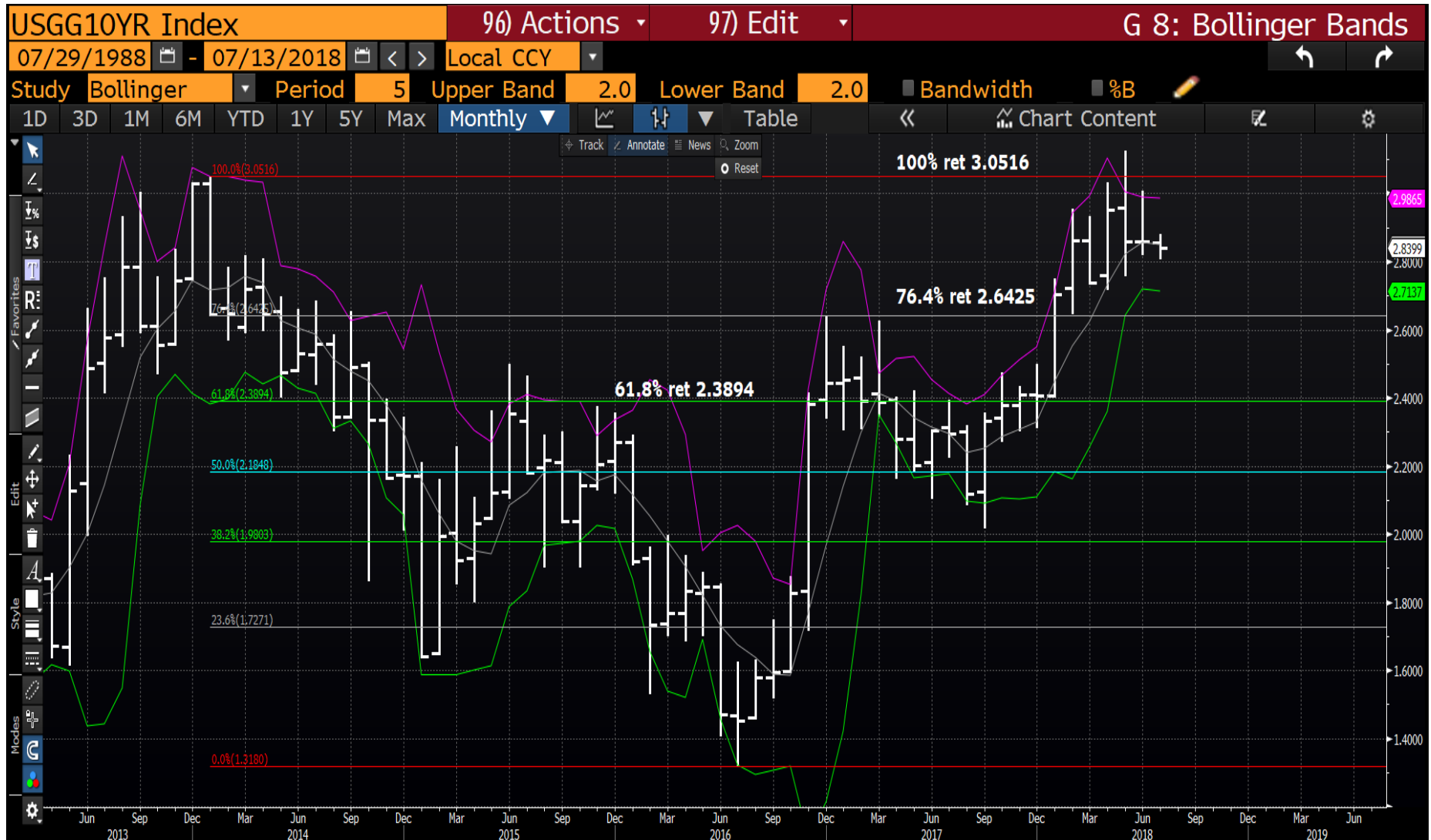
13/07/2018

US 10yr yield quarterly : Could this be the PERFECT failure? This is poised to be the PERFECT failure at the 2.8474 38.2% ret. Another chart where if HISTORY REPEATS ITSELF, yields will be significantly lower.





US 10yr monthly : We have made a new low on last month BUT unlike the US 30yr it doesn't carry the same enormity of breach.



US 5yr quarterly : To many, this remains a positive chart i.e. above the moving average and trendline BUT the RSI will not diminish given it is of 1982 proportions. Also once we fail the moving average 2.1391, there are numerous example of what has happened before.



US 5yr monthly : A MAJOR statement as we are now back in the LONGTERM trend channel (2.7847), the RSI has A LOT of unwind potential. Key break would be SUB the MOVING AVERAGE 2.4982.



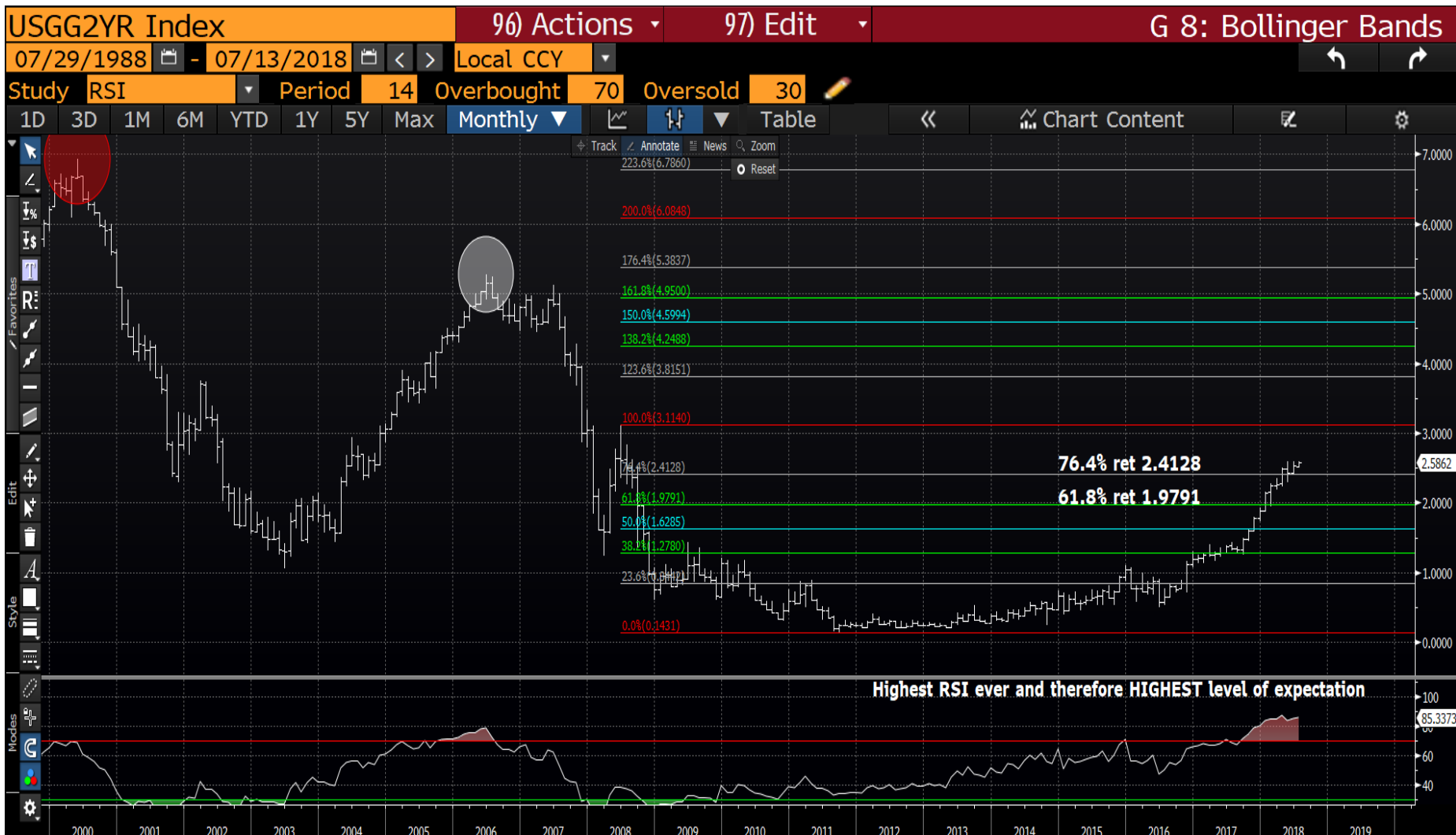
US 5yr monthly : Another perfect formation looming, we have stalled against the trend channel with significant room to head lower. Sub the moving average 2.4891 will help, ALOT.



US 5yr weekly : We have failed the 50% ret 2.8846, targeting the 38.2% ret 2.330. The RSI at 1984 levels!



US 2yr monthly : The RSI speaks for itself and we look close to STALLING, sub the 76.4% ret 2.4128 is KEY.



13/07/2018

14

Generic German 10yr quarterly : We now have 2 SOLID UPSIDE PIRECES that are etched in history, this will form an explosive bearish tone for yields. Whilst teasing the multi year channel this is forming a very nice-tidy chart. COULD it be as simple as this?!



Generic German yield daily : We have seen a rapid about turn and hopefully can breach the 50% ret 0.302 before the weekend. The new futures HIGH should help.





Bund daily : Bunds have posted a new HIGH since that of late May and should therefore KICK START a CTA BUY, adding to a significant LONG built up since inception in Feb. I doubt they have many sellers keen to take them on.



UK 10yr monthly : Another perfect chart formation! We are back below the 2008 trendline 1.316 and yields should head a lot lower. A KEY level to fade on any bounce!



UK 10yr yield daily : We have failed key resistance at the 50% ret 1.307, sub the 61.8% ret 1.217 will be start triggering STOPS.



Gilt daily : Sadly we have only MATCHED the previous high 123.49 subsequently CTA's wont be buying, YET. I would say they are LONG given the TREND and minimal dip.



DBR 46 daily : This has been a VERY trending BOND and has performed WELL.  
 Hopefully we can breach the 138.628 high and trigger stops!

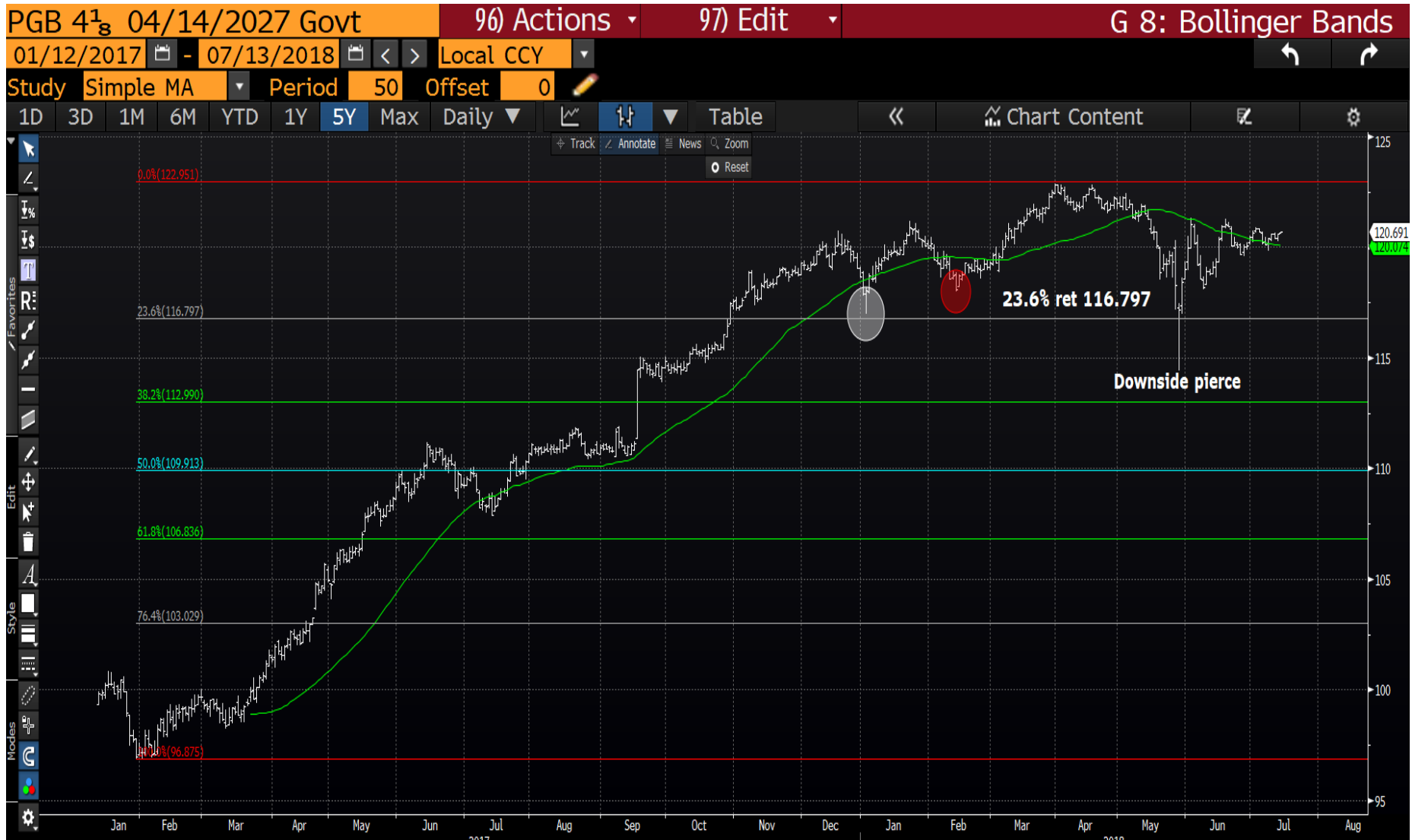


Italian generic 10yr daily : We are facing a MAJOR test in the form of the 38.2% ret 2.496 and 50 day MOVING AVERAGE. Prefer to see the outcome of this after the weekend.

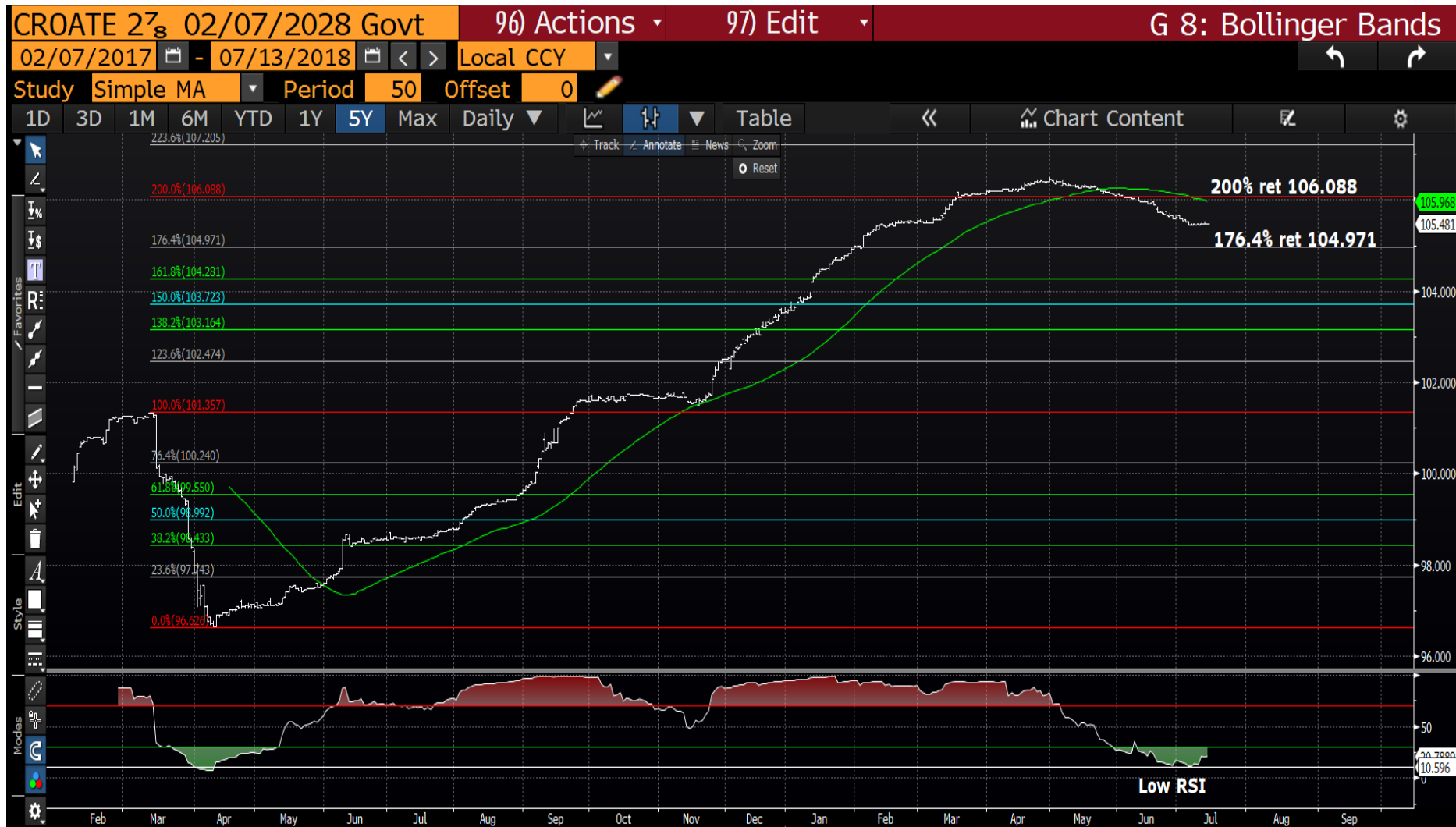


13/07/2018

Portugal 27's : A very sideways market but one now above the 50 day moving average  
120.074.



\*\*Croatia 28' daily : The RSI is now VERY low but we have dipped below the 200% ret 106.088. We should HOLD here given the RSI.

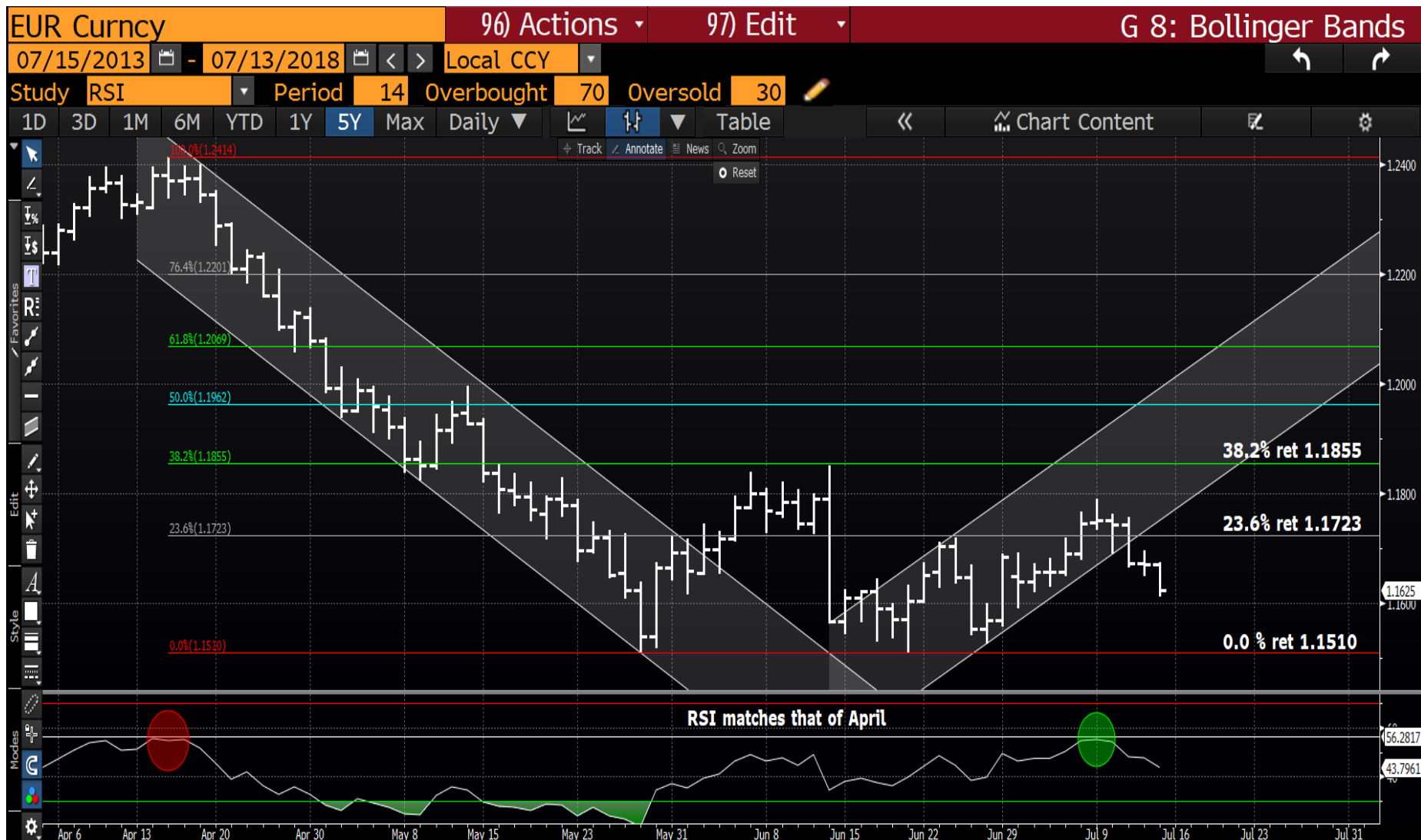




EUR USD quarterly : We have opened at the close of the last quarter, hopefully we can just head lower directly from here, in a similar fashion to last quarter. The initial target may be the 50% ret 1.1241 thereafter it could be the 61.8% ret 1.0109.



EUR USD daily : Fridays are generally a good day for FX moves and hopefully today will be no exception! Ideally we maintain todays coarse lower targeting the recent low 1.1509, SUB that then its ACCELERATION time.



This research was prepared by Chris Williams. He is a self-employed contractor with Astor Ridge. A history of his research can be provided upon request in compliance with the European Commission's Market Abuse Regulation.

Astor Ridge takes no proprietary trading risk, has no market making facilities, and has no position in any security we discuss in this e-mail. The views in this e-mail are those of the author(s) and are subject to change, and Astor Ridge has no obligation to update its opinions or the information in this publication. If this e-mail contains recommendations, those recommendations reflect solely and exclusively those of the author, and such opinions were prepared independently of any other interests, including those of Astor Ridge and/or its affiliates.

This publication does not constitute personal investment advice or take into account the individual financial circumstances or objectives of the clients who receive it. The securities discussed herein may not be suitable for all investors. Astor Ridge recommends that investors independently evaluate each issuer, security or instrument discussed herein, and consult any independent advisors they believe necessary.

The value of and income from any investment may fluctuate from day to day as a result of changes in relevant economic markets (including changes in market liquidity). The information herein is not intended to predict actual results, which may differ substantially from those reflected. Past performance is not necessarily indicative of future results.

You should not use or disclose to any other person the contents of this research, nor take copies. This is not a representation or warranty and is not intended nor should it be taken to create any legal relations, contractual or otherwise. This research and any files transmitted with it are confidential, may be legally privileged, and are for the sole use of the intended recipient. Copyright in this research and any accompanying document created by Astor Ridge LLP is owned by Astor Ridge LLP.

Astor Ridge LLP is regulated by the Financial Conduct Authority (FCA): Registration Number 579287

Astor Ridge LLP is Registered in England and Wales with Companies House: Registration Number OC372185

Astor Ridge NA LLP is a member of FINRA/SIPC: CRD Number 282626

Astor Ridge NA LLP is Registered in England and Wales with Companies House: Registration Number OC401796