

MARKET UPDATE : CONSOLIDATION OVER TIME NOW FOR BOND YIELDS TO FALL, STOCKS CONTINUE TO DEFY ALL LOGIC.

BOND YIELDS HAVE HAD A REPRIEVE BUT SHOULD CONTINUE TO REPLICATE 2011-2012 HISTORICAL MOVE.

STOCKS REMAIN VERY OVER BOUGHT AND MANY NOW LOOK LIKE PUTTING IN LONGTERM TOPS, BUT THAT SAID NEED TO FAIL THIS WEEK!

- 1. WE NEED SOME NEW BOND YIELD LOWS SOON. YIELDS CONTINUE TO GRIND LOWER WITH GERMANY AND US 5YR FOCUS CHARTS, TIME TO REPLICATE THE 2011-2012 SCENARIO.**
- 2. STOCKS LOWER INTO THE WEEKEND, IDEALLY THEY HEAD LOWER FROM TODAY AS MANY HAVE ONLY JUST REVISITED THEIR RECENT HIGHS. THE CORONAVIRUS DOES NOT SEEM TO BE ABATING.**

BONDS :

THERE ARE MANY KEY CHARTS TO BACK UP THE REPLICATION OF THE 2011-2012 YIELD SCENARIO ESPECIALLY IN THE US, WHILST GERMANY BREACHED BACK INTO THE LONGTERM DOWNTREND YIELD CHANNEL. ADDITIONALLY THE DBR 46'S HAVE BREACHED THEIR SIGNIFICANT MOVING AVERAGE.

US BREAKEVENS AND USGGT :

BREAKEVENS COULD BE POISED TO TOP OUT.

COMMODITIES : VERY LITTLE GROUND HAS BEEN GIVEN BACK ON LAST YEARS RALLY WITH GOLD REMAINING IN VERY POSITIVE TERRITORY.

EQUITIES : STOCKS NOW LOOK VERY VULNERABLE, THE WORST IS YET TO COME.

USGG30yr monthly : **** ONE TO WATCH **** This could be the perfect chart if we breach 2.00%, this will allow for a greater extension on the month. The months low would likely be 1.5-1.60% area.

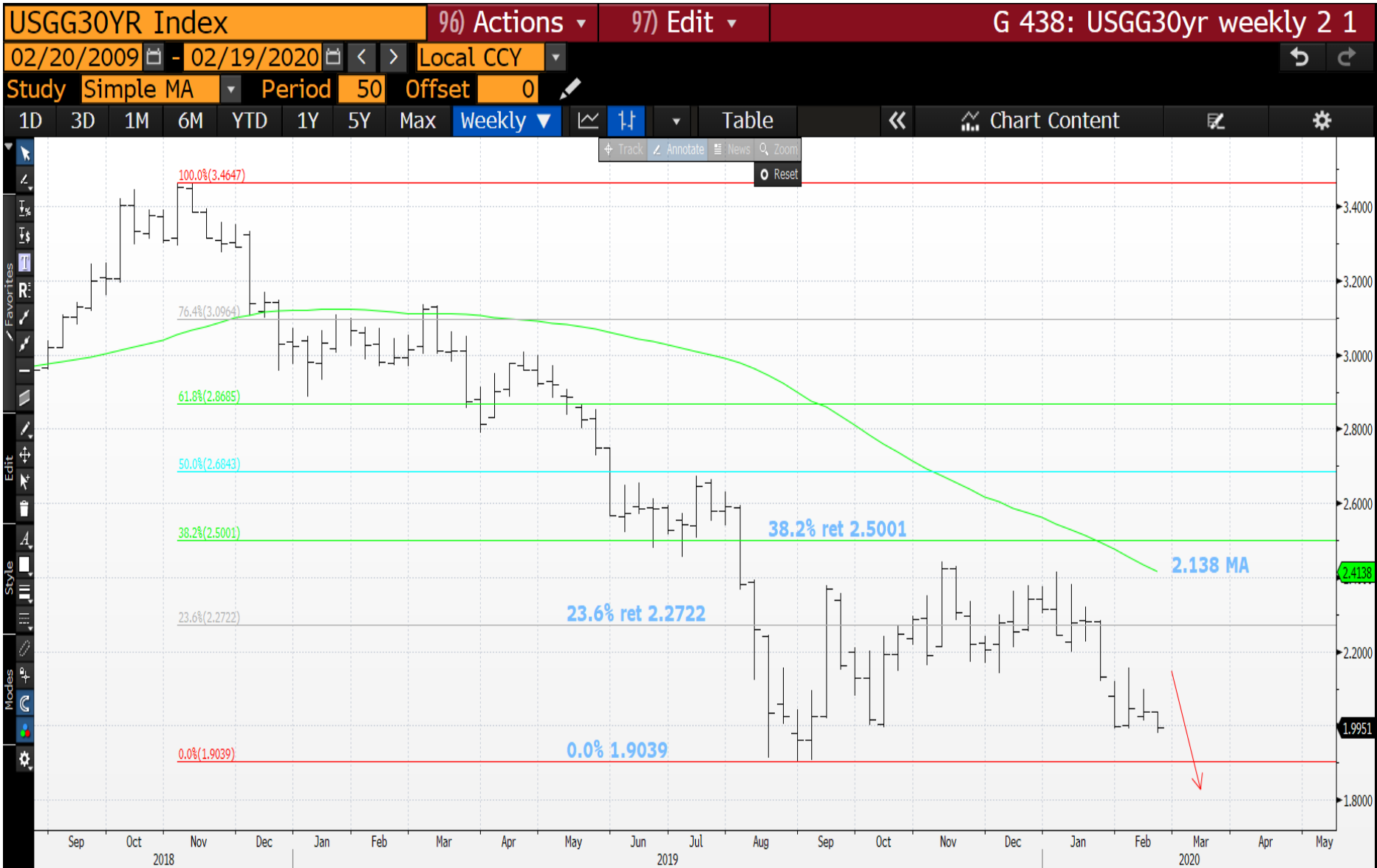


19/02/2020

USGG30yr weekly (Taken from Feb 2011 high to July 2012 low) : Hopefully this chart and the following will look similar. That time we failed the 38.2% retracement and 50 day moving average, formulating a new low shortly after.



USGG30yr weekly (Now) : Ideally WE BREACH THE RECENT LOW 1.9039 before the weekend.

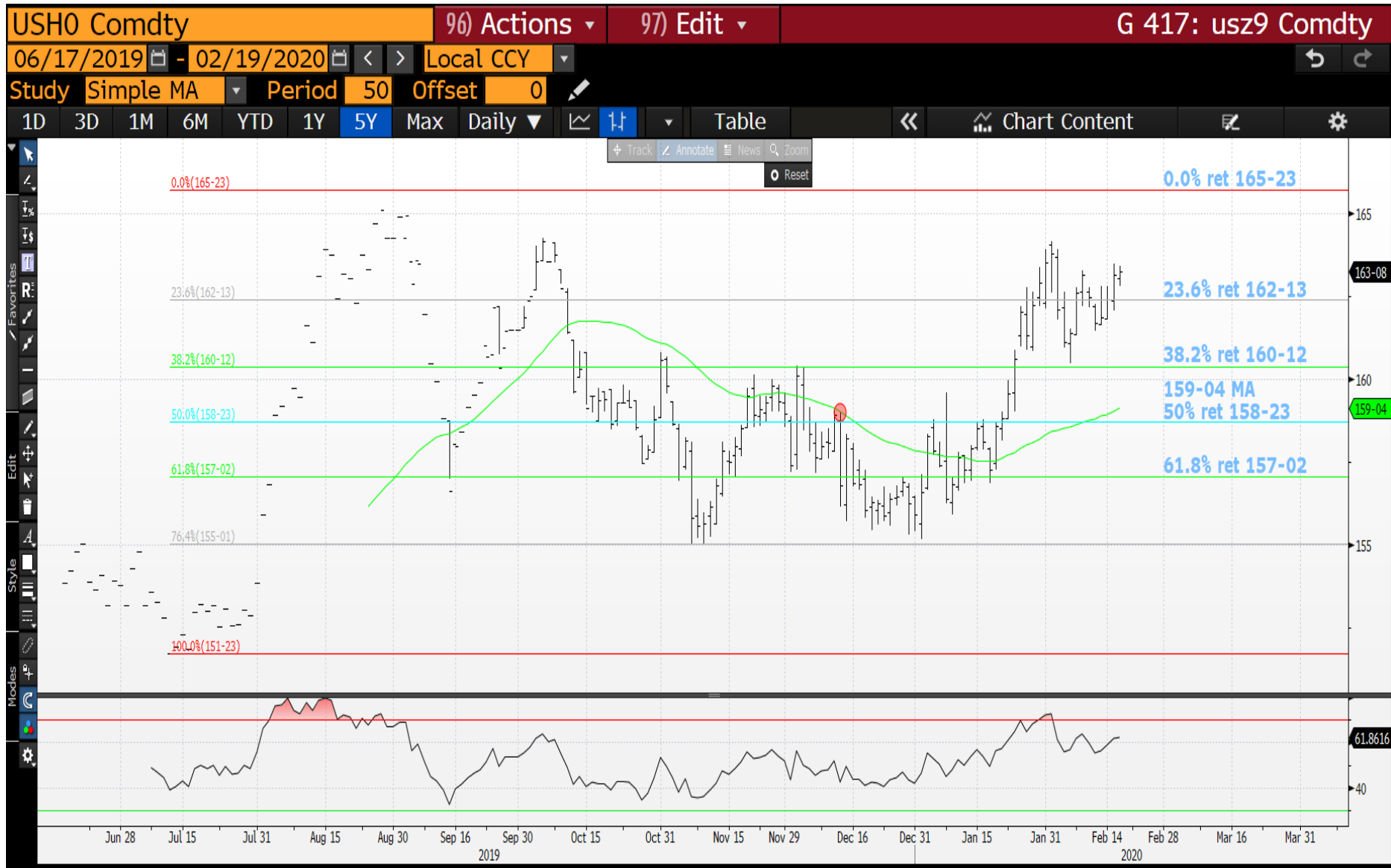


19/02/2020

USGG30yr yield daily : *ONE TO WATCH* The RSI is neutral thus would be more of a “level” break here. Sub the 176.4% ret 1.9972 would be ideal.



US 30yr futures daily : We are making progress higher but ideally need a new high by the weekend.



19/02/2020

US 10yr yield quarterly : *Possibly the chart to watch.* The quarterly RSI is off the lows BUT we CONTINUE to REJECT the all important 2.00 % yield level. This could a critical signal!



19/02/2020

USFS 10-20 monthly : A very nice rejection of the 2.2114 previous low. Lower we go.



19/02/2020

US 10yr yield weekly (Taken from Feb 2011 high to July 2012 low): That time we fell SHY of the retracement and MOVING AVERAGE.



US 10yr yield weekly (Now) : Hopefully we fail today and close lower down this weeks yield BAR, breaching 1.500 in the process.



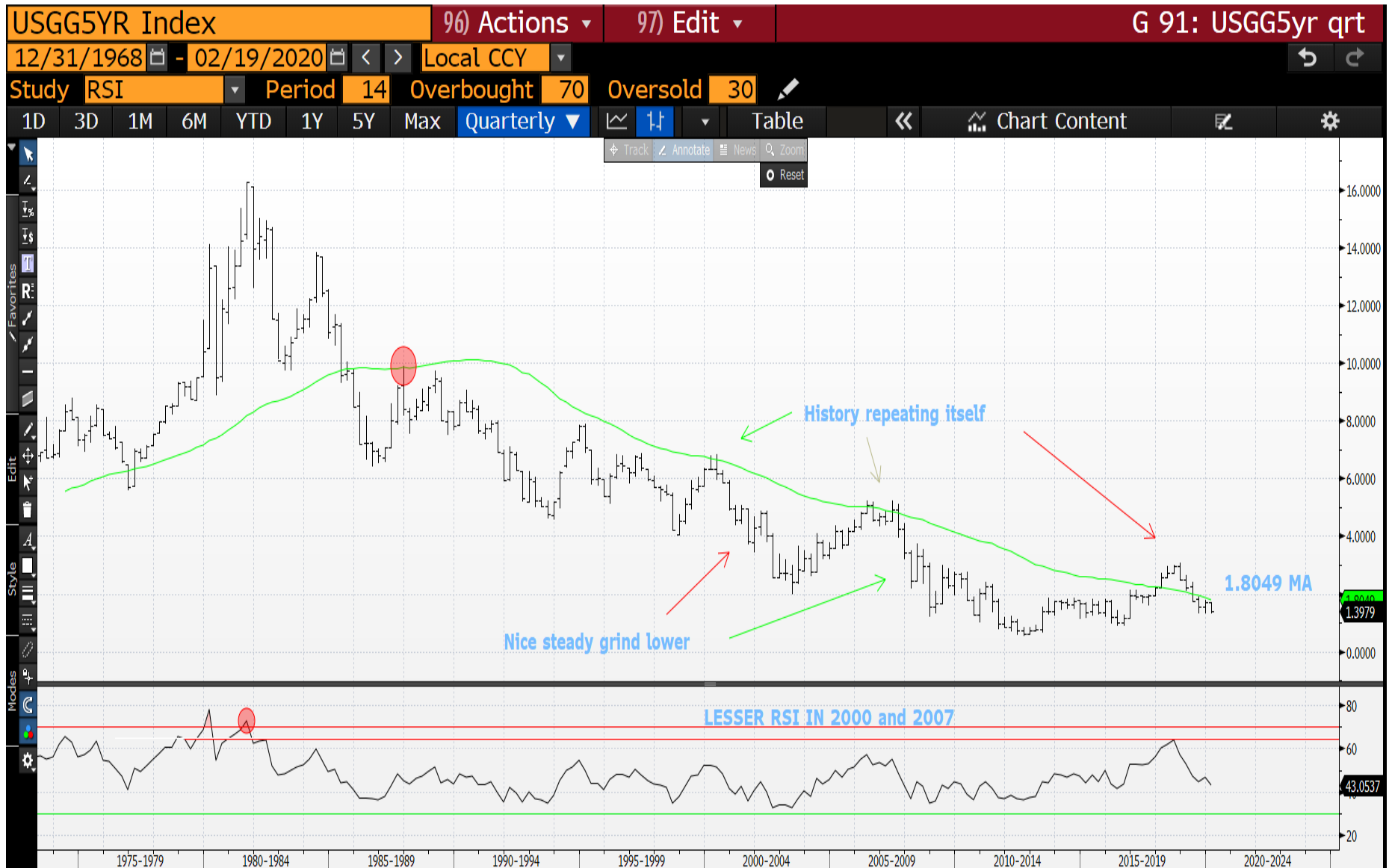
USGG10yr daily : The RSI is off its lows and we remain sub ALL moving averages, we just need to fail today.



US 10yr futures daily : We have had the consolidation, time to move higher.



USGG5yr quarterly : ** Critical chart ** The moving average has proved steadfast resistance, lower we go.



USGG5yr weekly (Taken from Feb 2011 high to July 2012 low) : That time the bounce was ONLY to the 23.6% ret 1.1520 indicating a very LAME bounce.



USGG5yr weekly (Now) : A great chart this given we hit the previous low, ideally we make a new yield low by the weekend end.

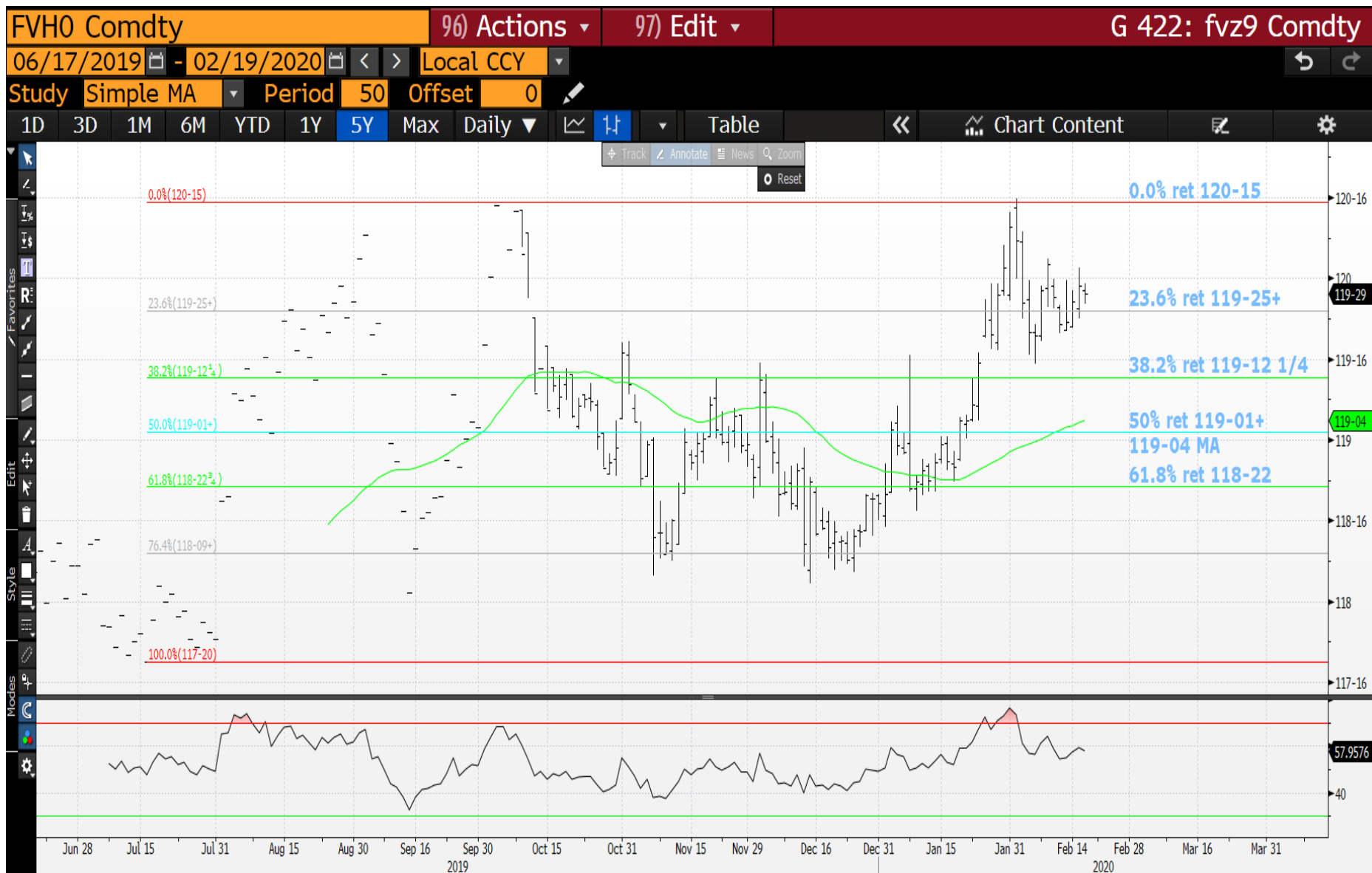


USGG5yr daily : We are below ALL moving averages, just need a new low.



19/02/2020

US 5yr futures daily : The RSI is now neutral but we need to HOLD the 23.6% ret 119-25+ for the bond rally to continue.

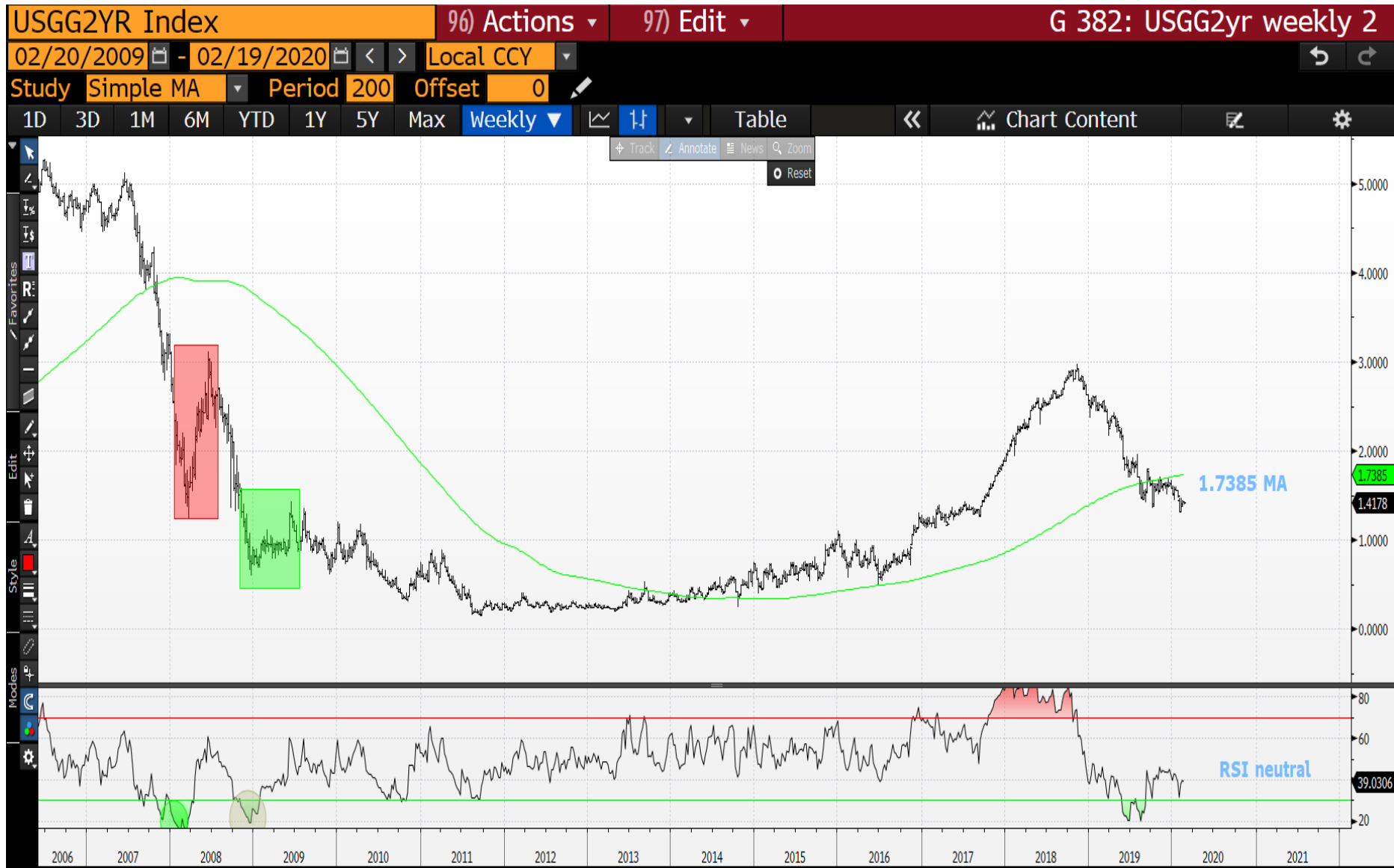


USGG2yr monthly : This continues to be the LAME sector of the curve and poised to head a lot lower.



19/02/2020

USGG2yr weekly : We have remained below the prominent 1.7385 moving average and keen to head lower.



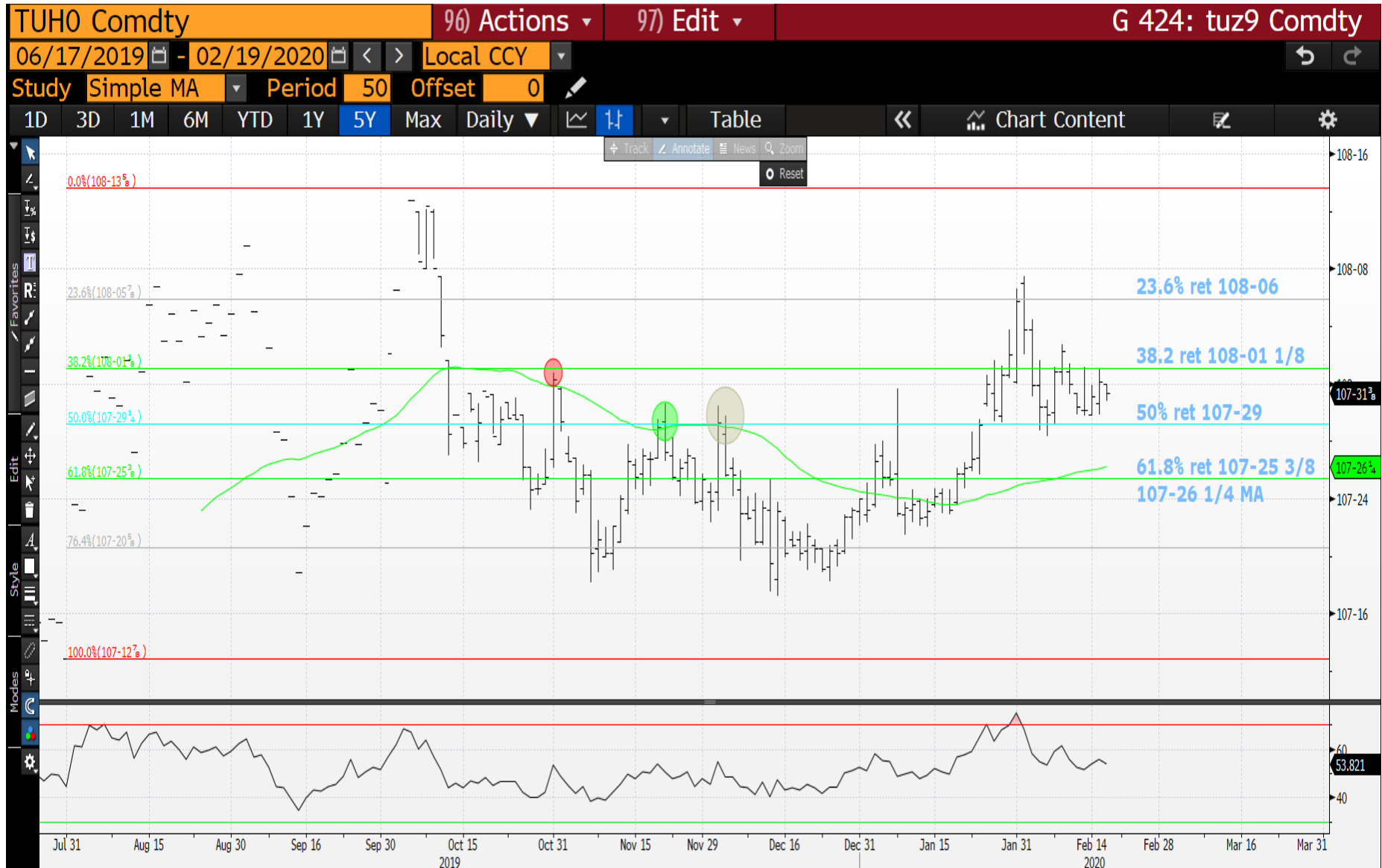
19/02/2020

19

USGG2yr daily : ****Further evidence of the STRUGGLE.**** We remain sub all moving averages so just a case of when we fail.



US 2yr future daily : Slightly frustrating as we have breached the 38.2% ret 108-01 1/8th.



19/02/2020

21

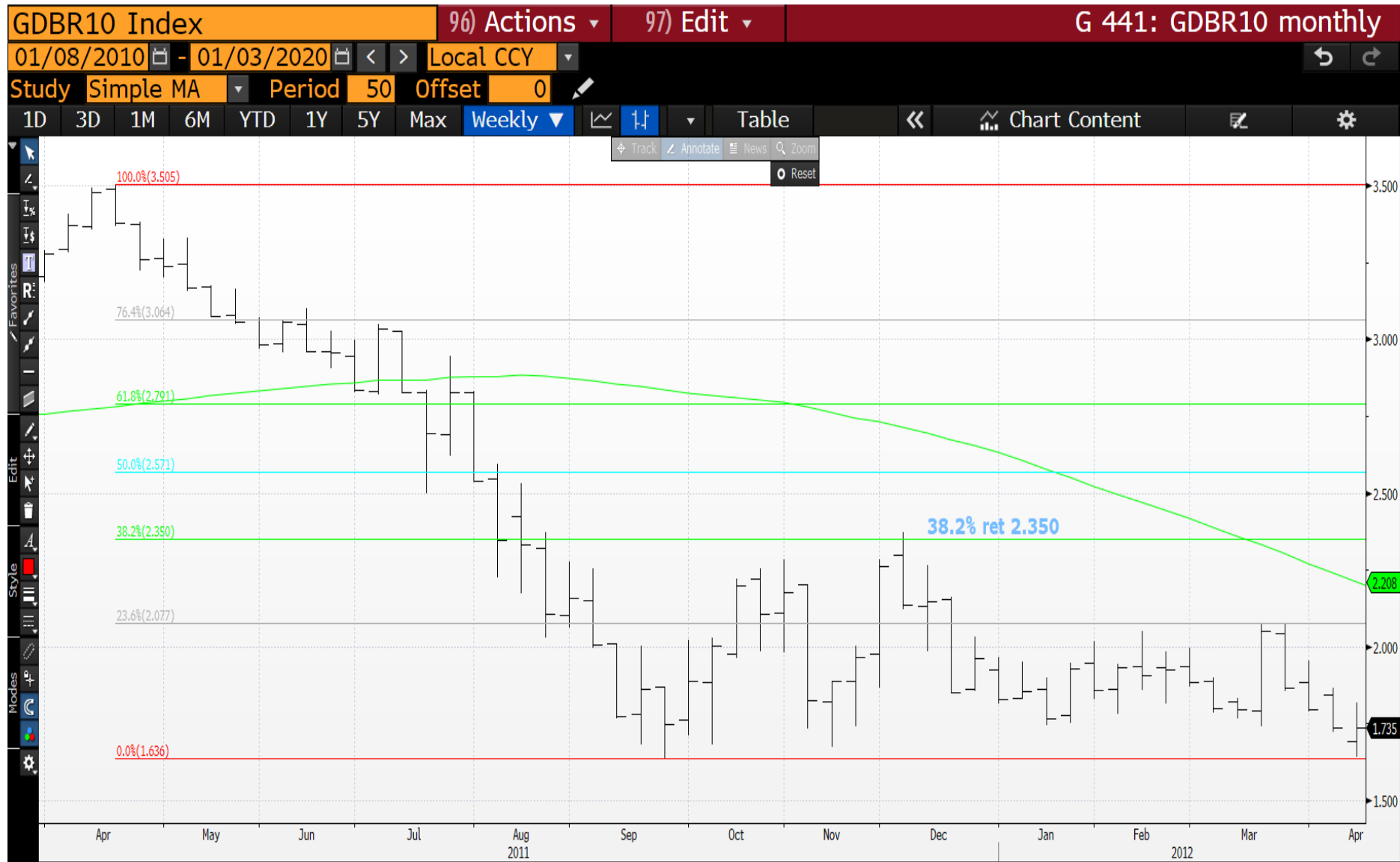
Generic German 10yr quarterly : This has been a VERY KEY chart and we have re-entered the CHANNEL -0.293. Lower we go.



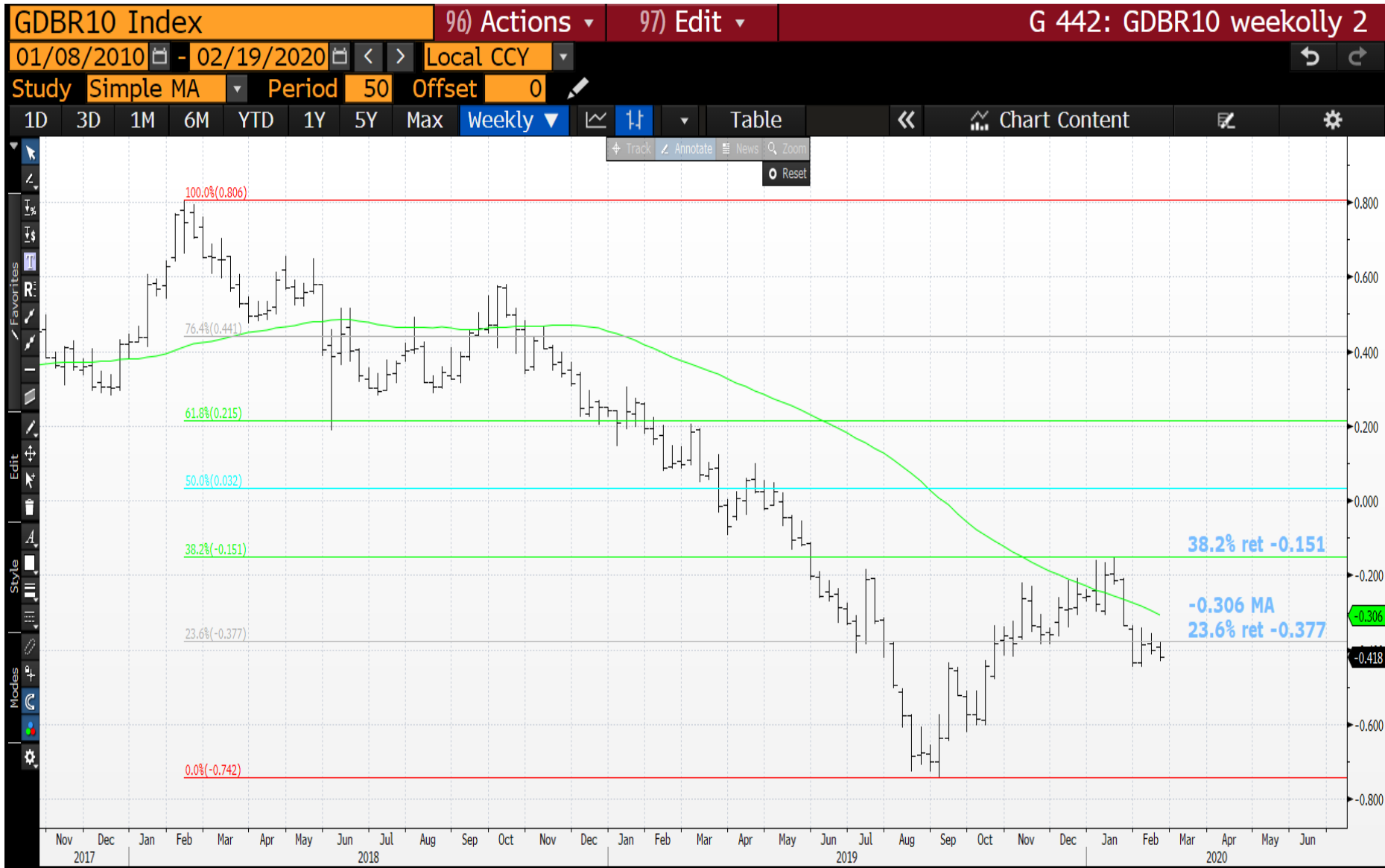
19/02/2020

22

Generic German 10yr weekly (Taken from April 2011 high to April 2012 low) : That time we hit the 38.2% ret 2.350 and failed.



Generic German 10yr weekly (Now) : ** A PERFECT CHART ** A very neat failure at the 23.6% ret -0.377, long may it continue.



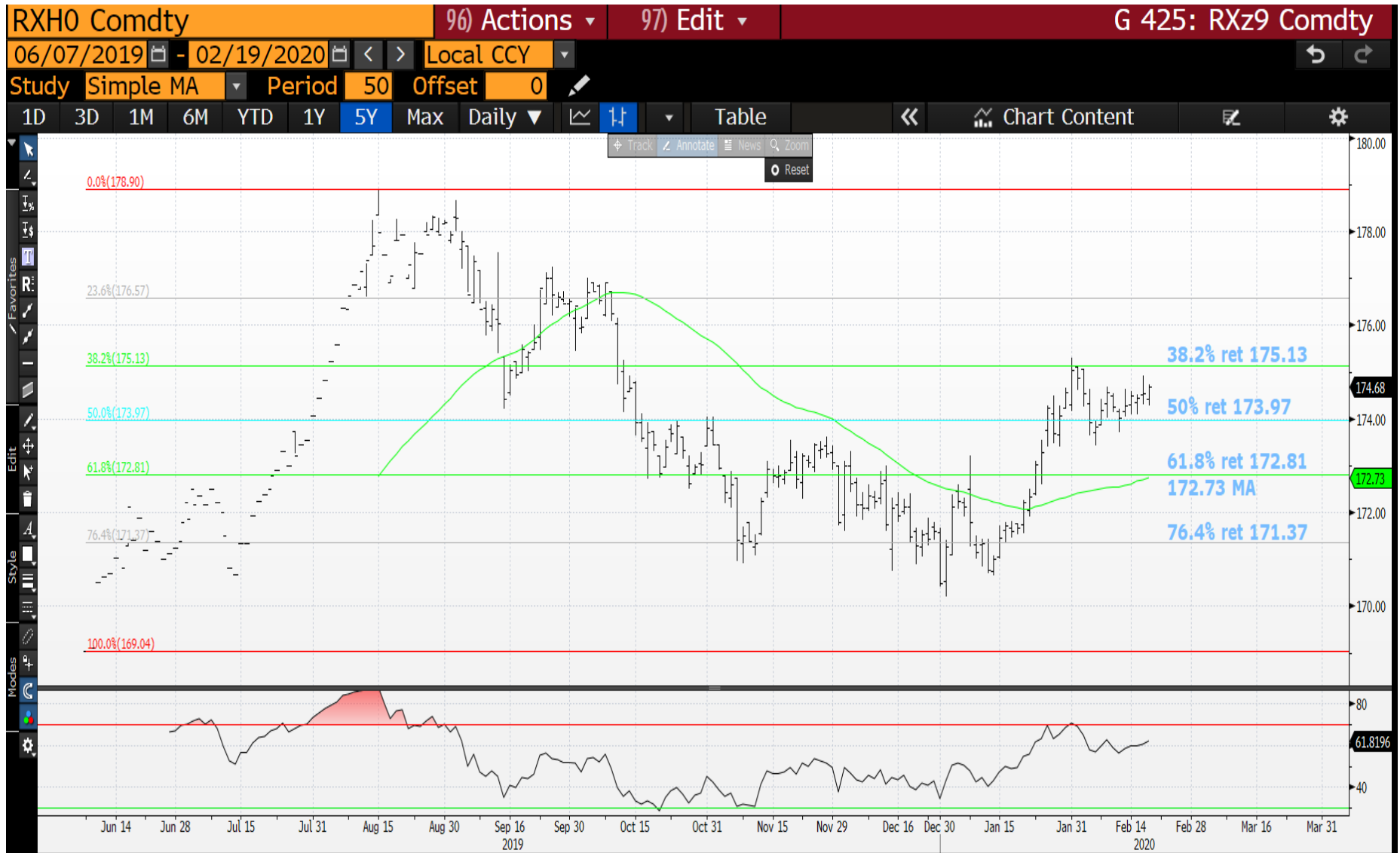
19/02/2020

24

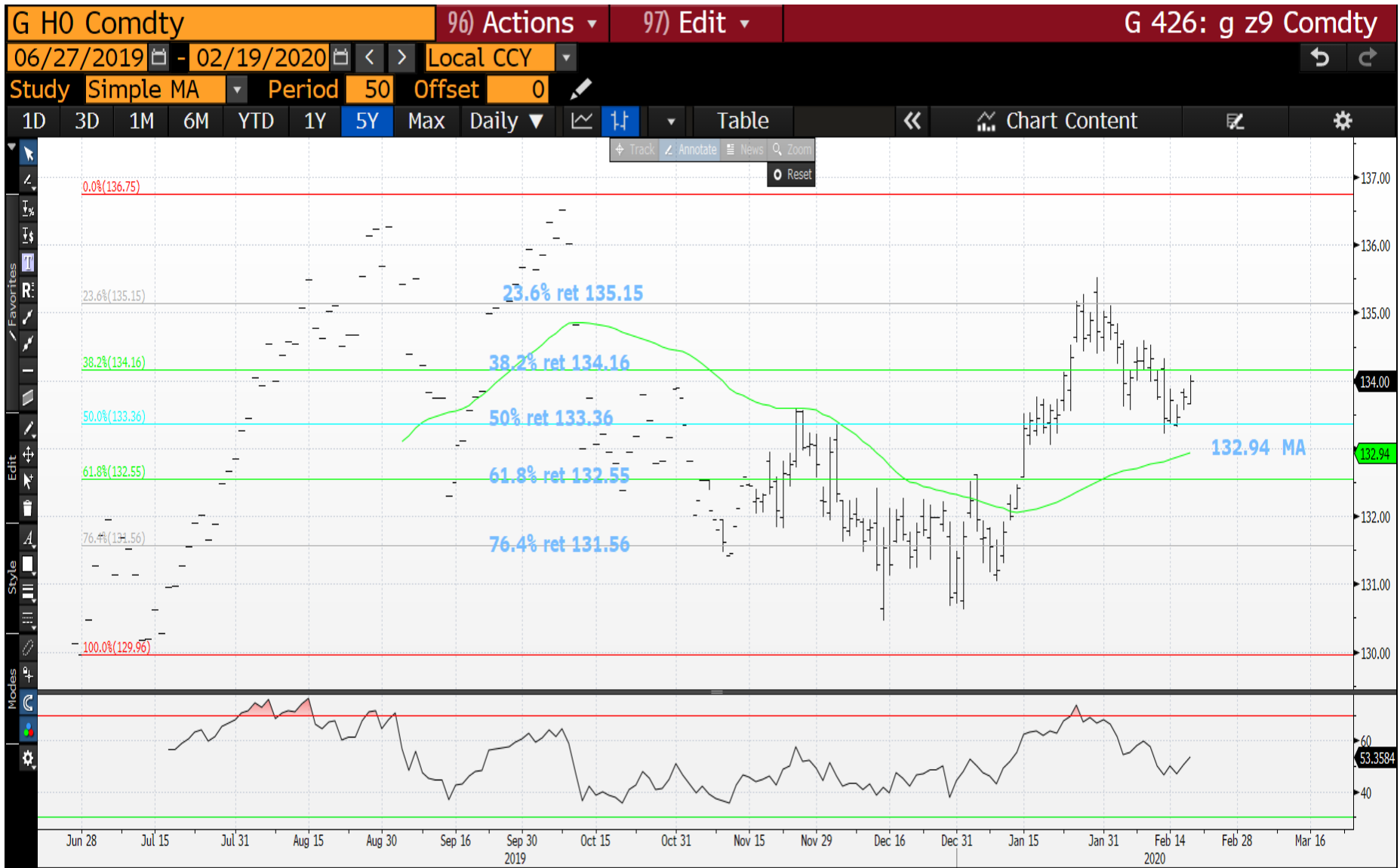
Generic German 10yr daily : We now have great resistance all the way, ideally we head lower from the 23.6% ret -0.377.



Bund future daily : The RSI is now NEUTRAL and HELD the 50% ret 173.97, next stop the 38.2% ret 175.13.



Gilt future daily : Hopefully gilts lead the way higher today.

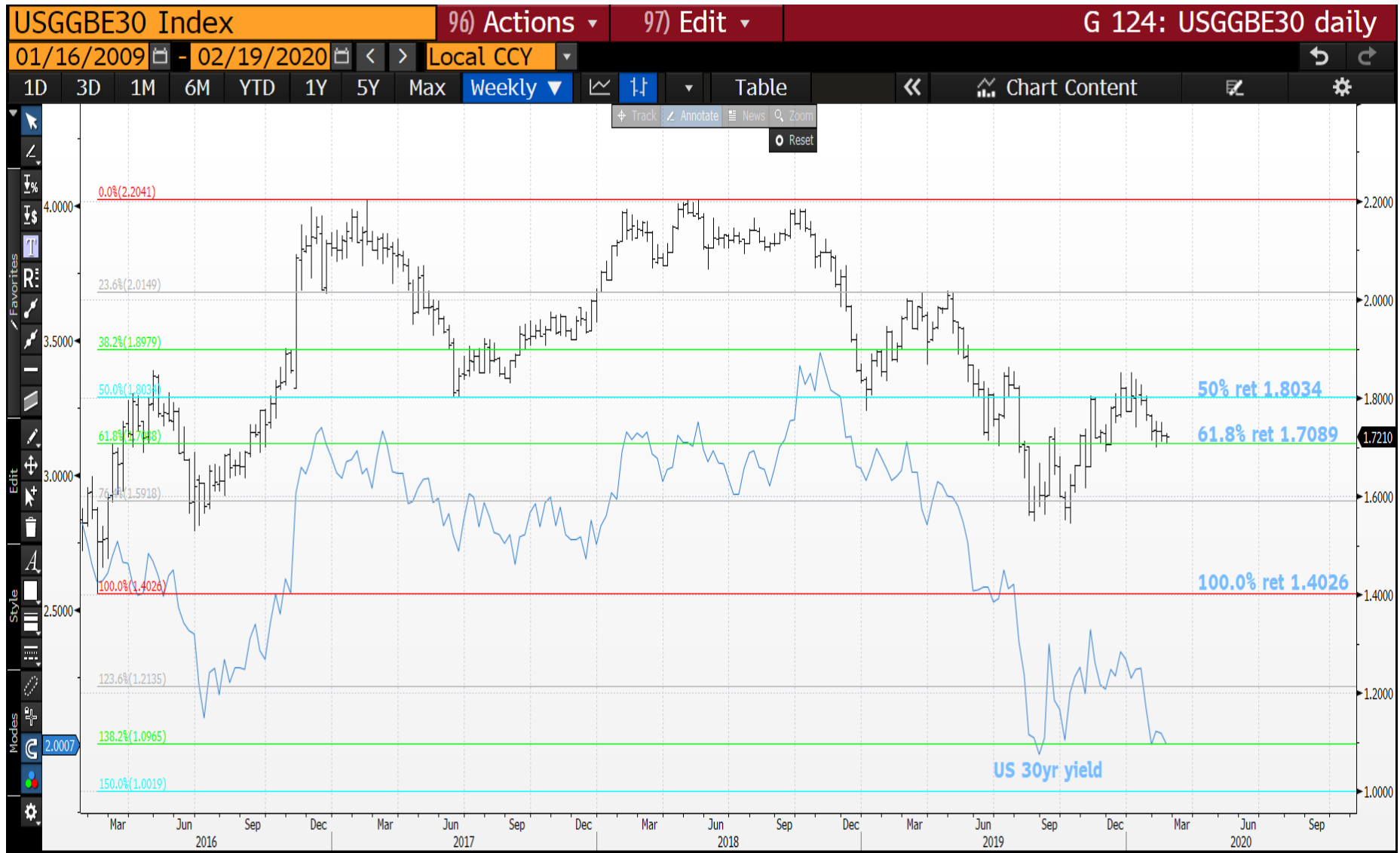


US BREAKEVENS :

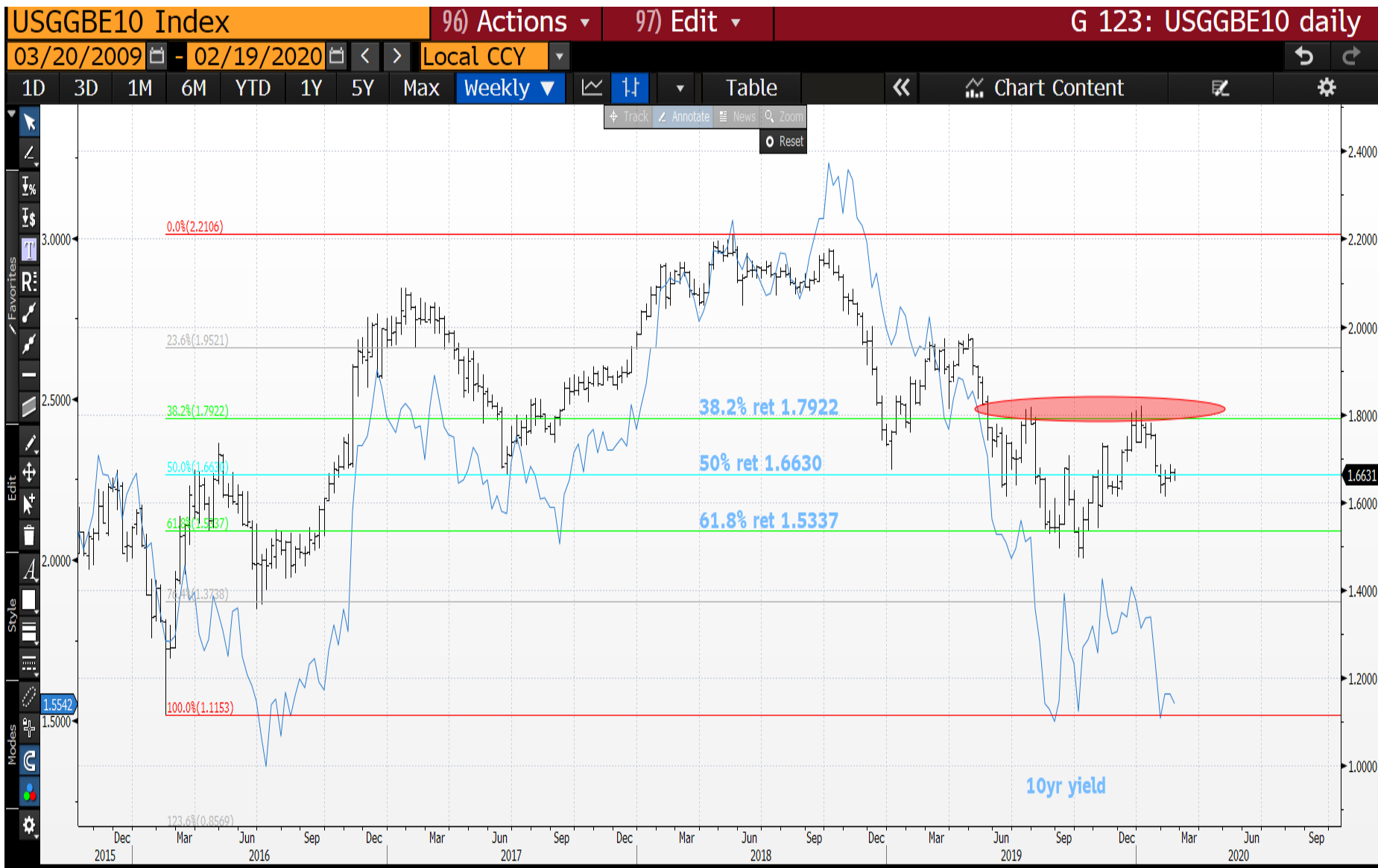
FINALLY IT LOOKS LIKE BREAKEVENS ARE TOPPING OUT AND FOLLOWING YIELDS LOWER.

MANY CHARTS HAVE BOND YIELD OVERLAYS.

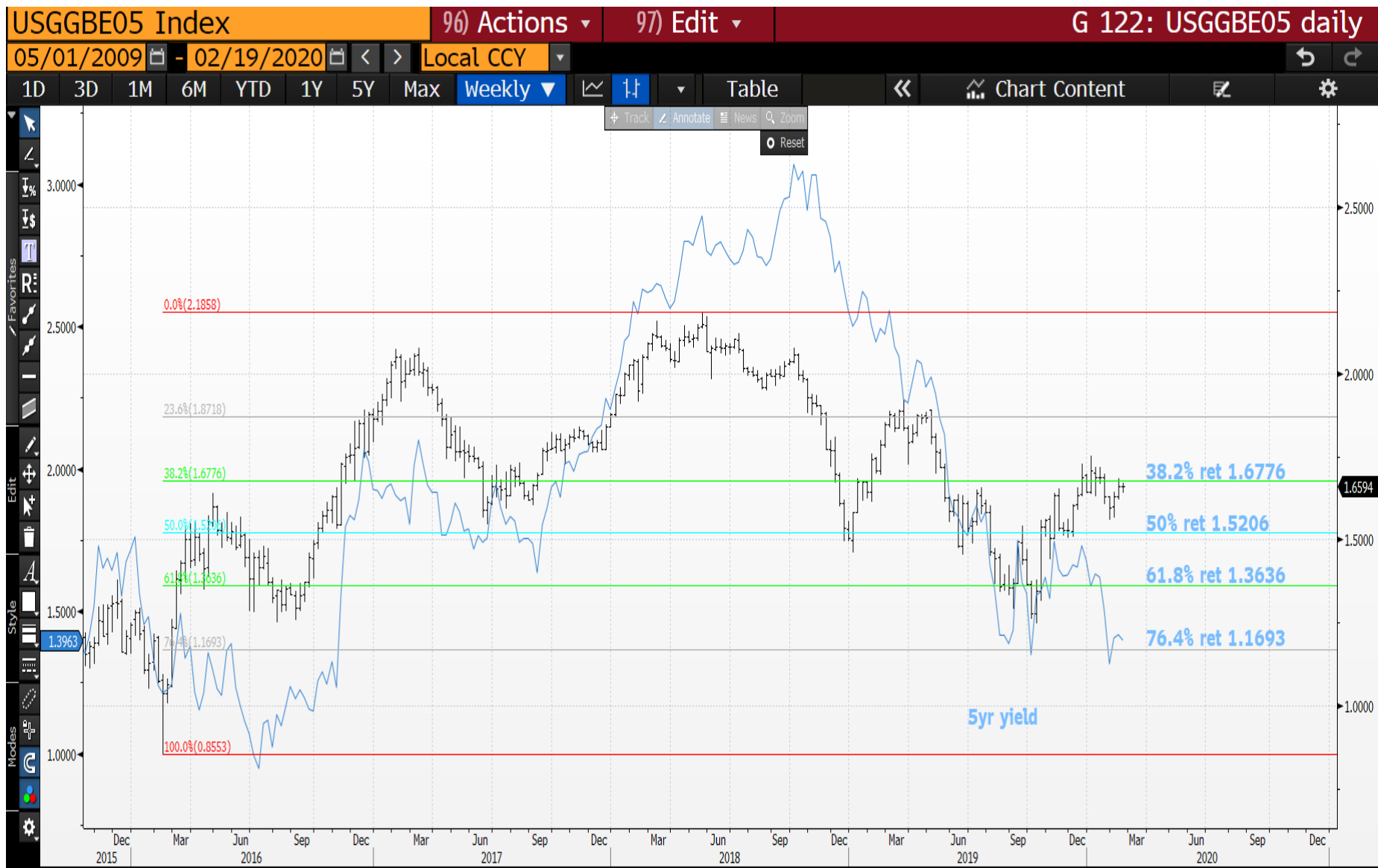
UKGGBE30 and 30yr yield weekly : The KEY BREAK will be of the 61.8% ret 1.7089.



USGGBE10 and 10yr yield weekly : The 50% ret 1.6630 could just be offering the suitable resistance.



USGGBE05 and 5yr yield weekly : As with the previous charts its all about remaining SUB the 38.2% ret 1.6776.



COMMODITIES

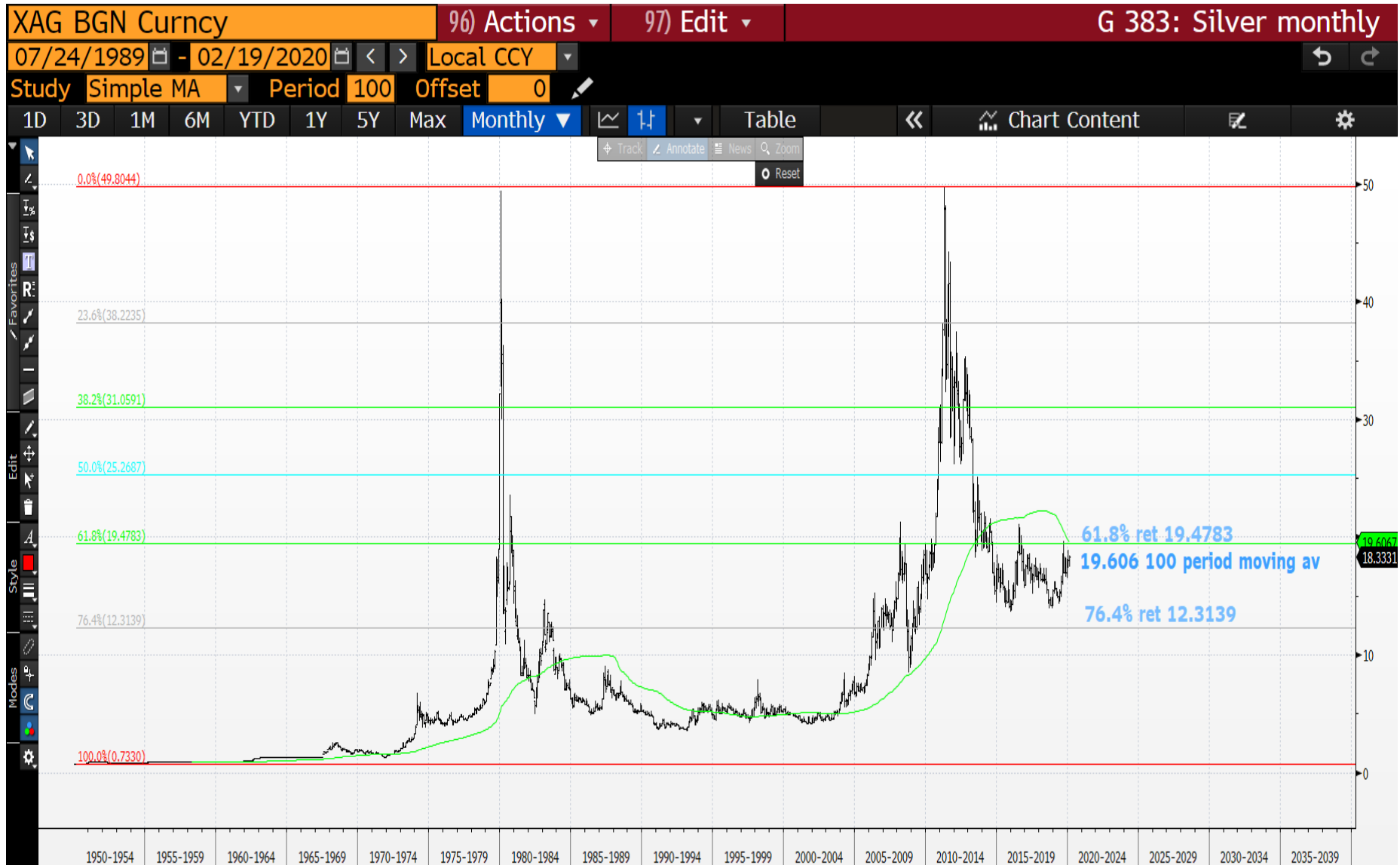
NOW THAT EQUITIES LOOK VULNERABLE GOLD IS POISED TO FLY, MANY HAVE BEEN LONG AND KEEN TO USE IT AS AN INSURANCE POLICY.

GOLD monthly : We have fallen just shy of the previous high but am sure it will be breached shortly.



19/02/2020

SILVER monthly : Am sure this will play catch up, certainly if the 61.8% ret 19.4783-moving average 19.606 is breached.



OIL monthly : The DAILY version has a low RSI so should see oil bounce from here.



EQUITIES

ALTHOUGH THE US STOCK MARKET SEEMS STRONG IT DOES REMAIN VERY OVER BOUGHT IN MANY SECTORS.

I STILL CANNOT BELIEVE THE VIRUS IS BEING CONTAINED AS WELL S STOCKS PORTRAY, TIME WILL TELL BUT IT FEELS LIKE A TOP THIS WEEK WILL BE A VERY EXTENDED ONE.

THE HANG SENG IS CLOSE TO BREACHING A MASSIVE LEVEL, ITS MULTI YEAR 23.6% RET 25601.07.

****THE NEXT 3 CHARTS ARE ONES TO WATCH OVER THE NEXT FEW DAYS****

APPLE weekly : IF this TOP is formed then the drop wont be small nor short-lived!



19/02/2020

38

APPLE daily : Providing we remain below the 200% ret 324.94 then next stop is the 176.4% ret 303.353. A perfect TOP if we fail today.



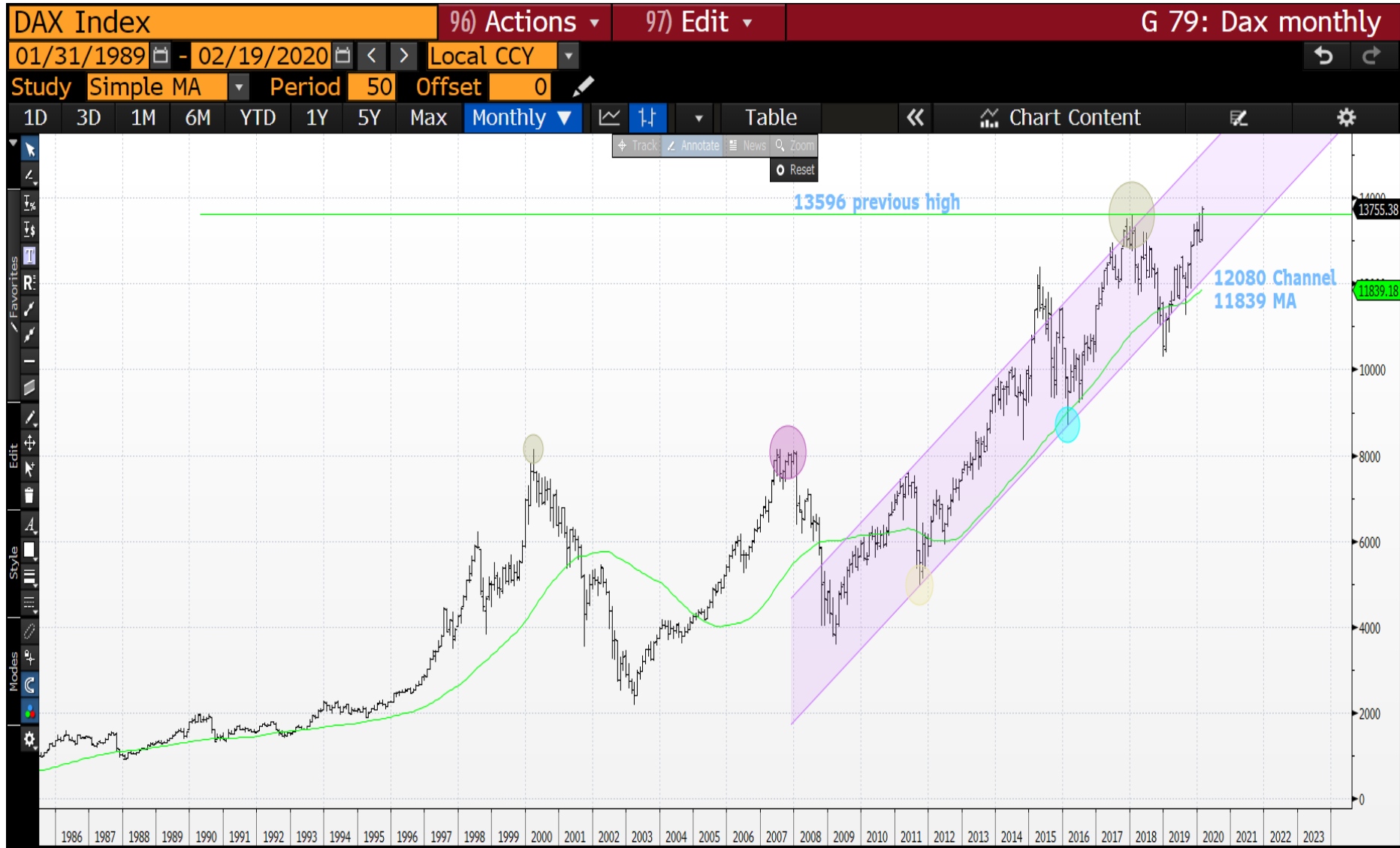
INTEL weekly : We have spent the week sub last weeks high so lets see if this persists into month end. Again this could form a VERY PROFOUND TOP.



UNITED TECHNOLOGIES weekly : Back below the trend line calls for a TOP.



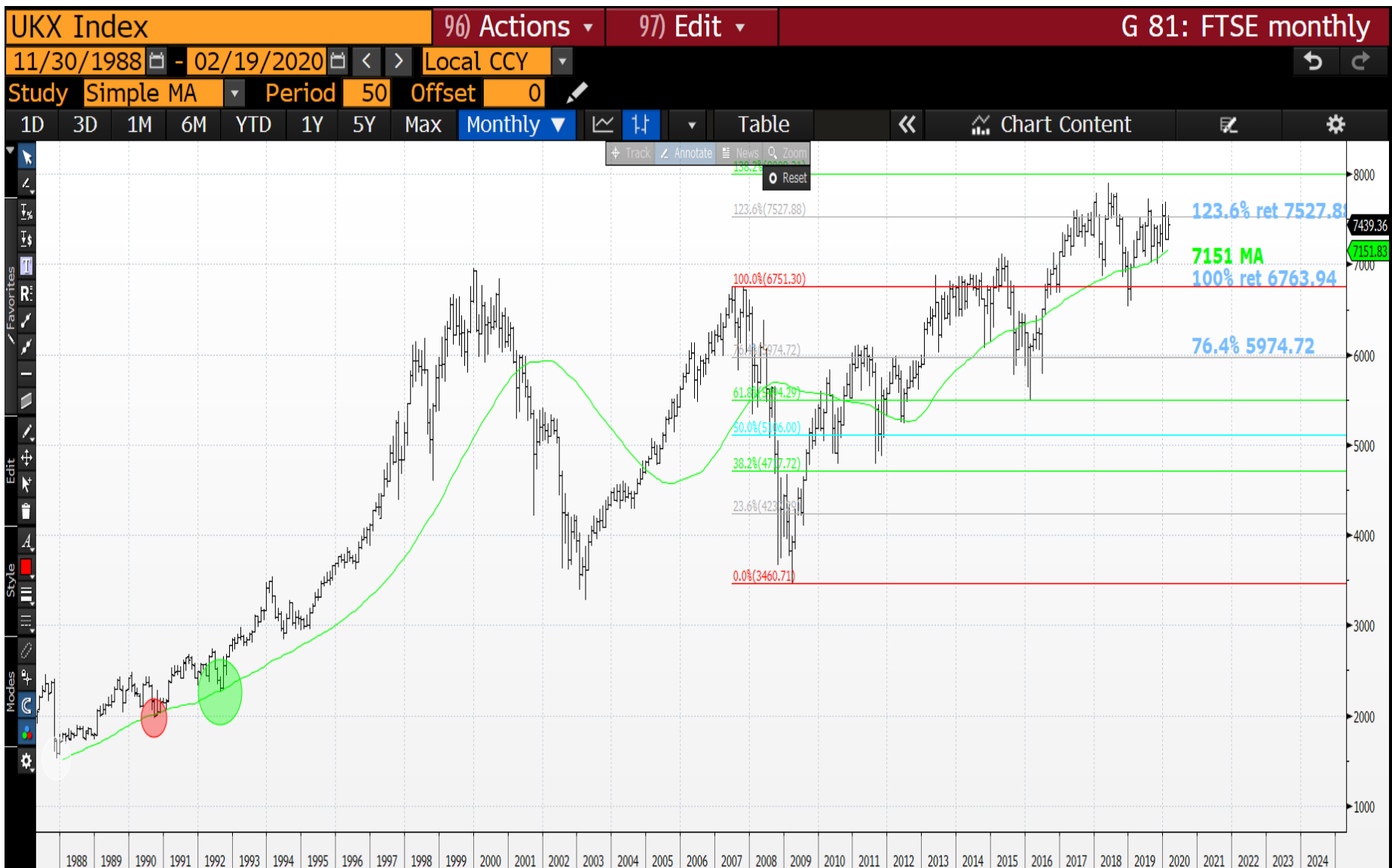
DAX monthly : The big test given we continue to test the previous high, FAILURE will be a BIG PROBLEM. We have popped the recent high but can this continue?



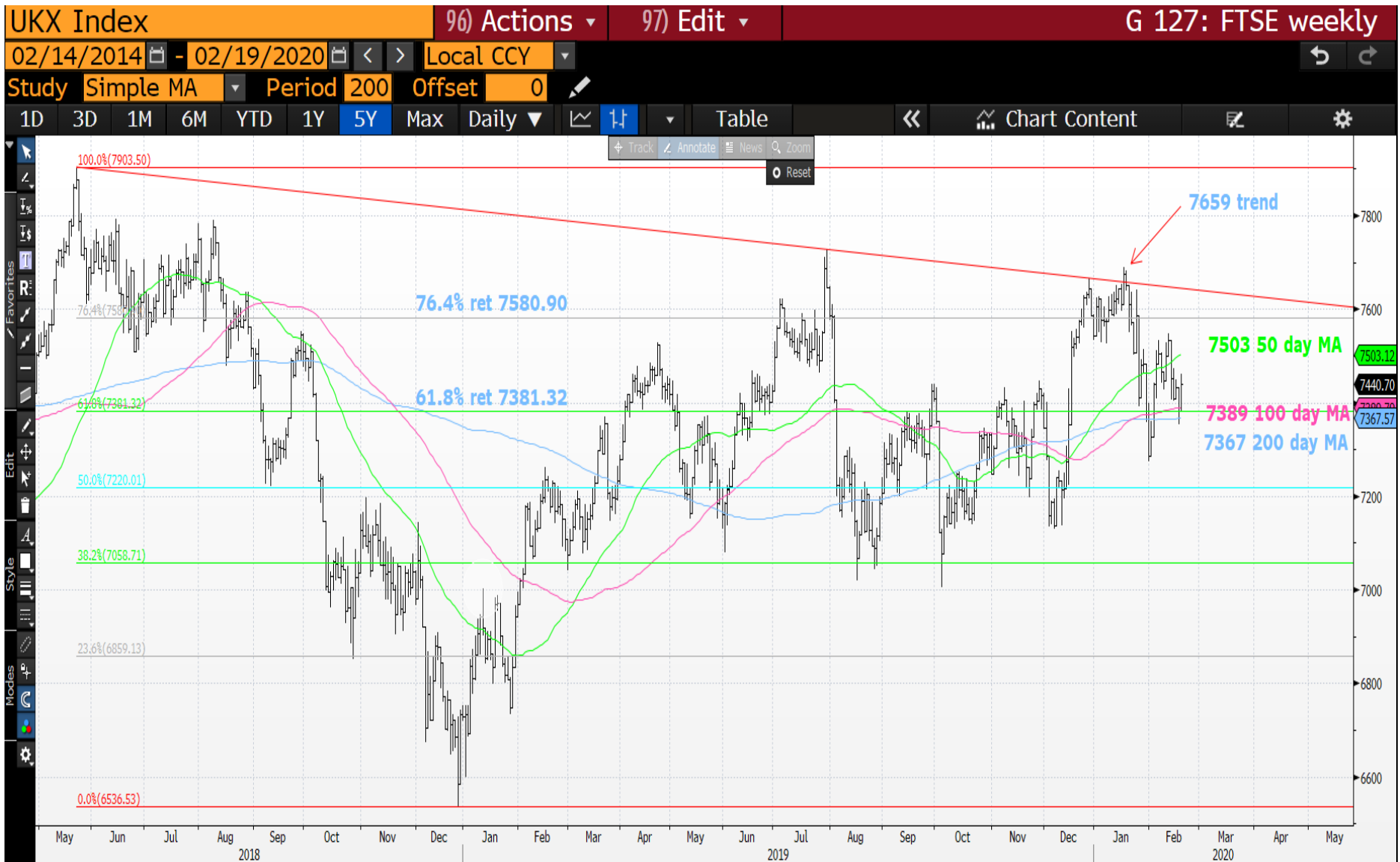
Eurostoxx monthly : We need to breach the 38.2% ret 3648 before things get serious.



FTSE monthly : We persist in failing the 123.6% ret 7527.88 THUS should head lower.



FTSE monthly : Not the same bounce as many other markets but that said we need to HEAD LOWER.



19/02/2020

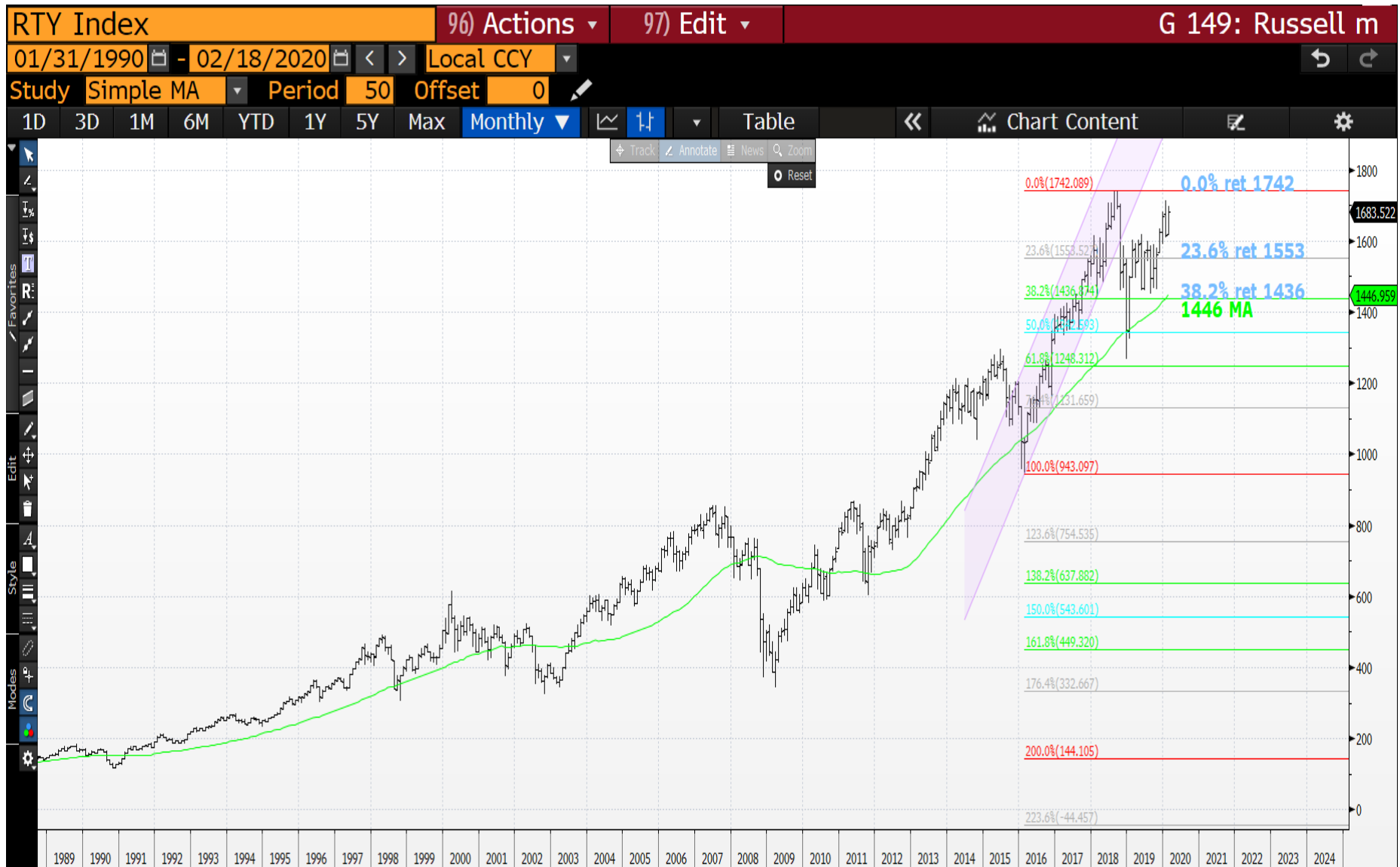
DOW weekly : Hopefully we fail on this second attempt at the high. ARE we stalling?



19/02/2020

46

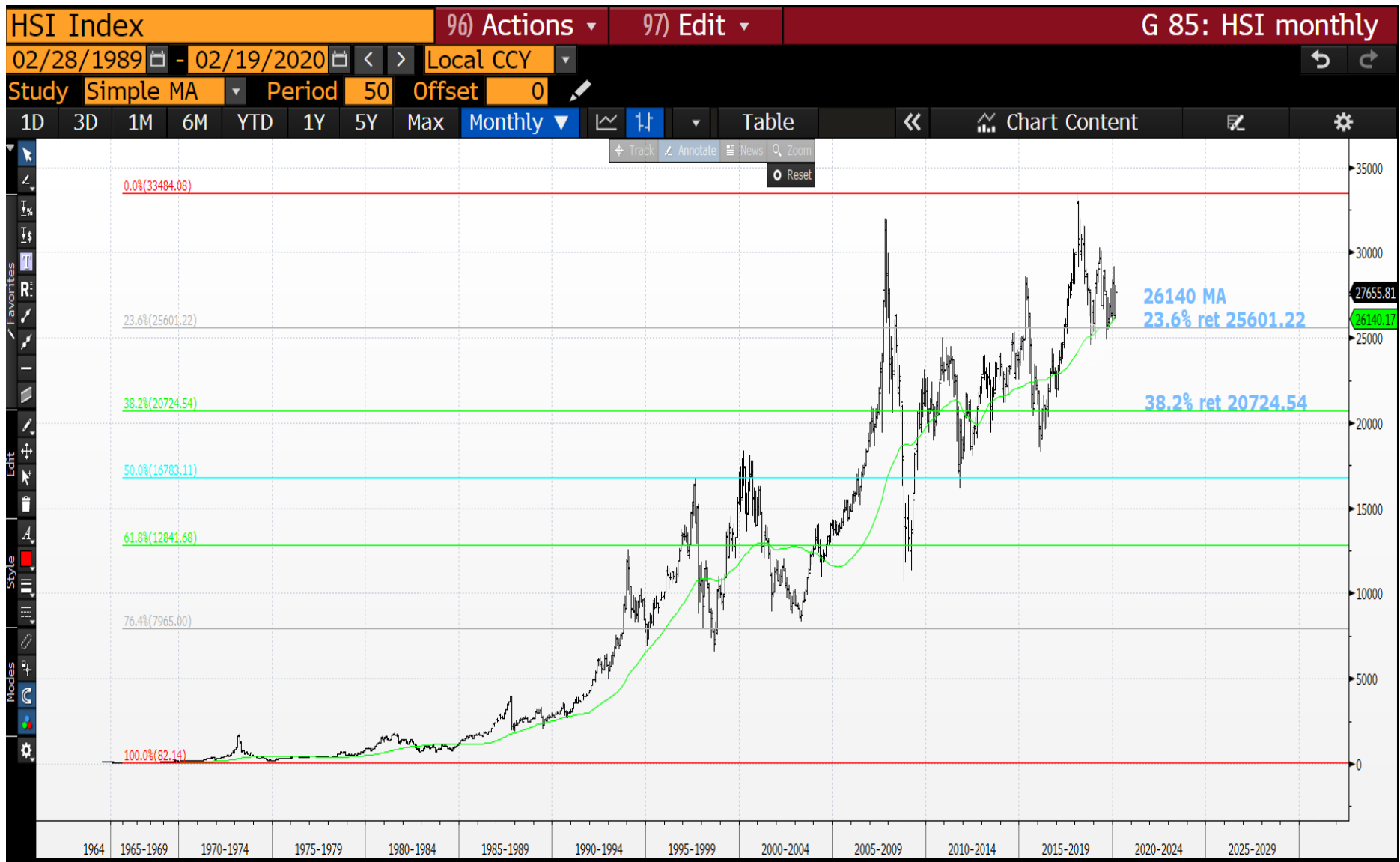
Russell monthly : A QUICK reversal this month but we do remain sub last months high.



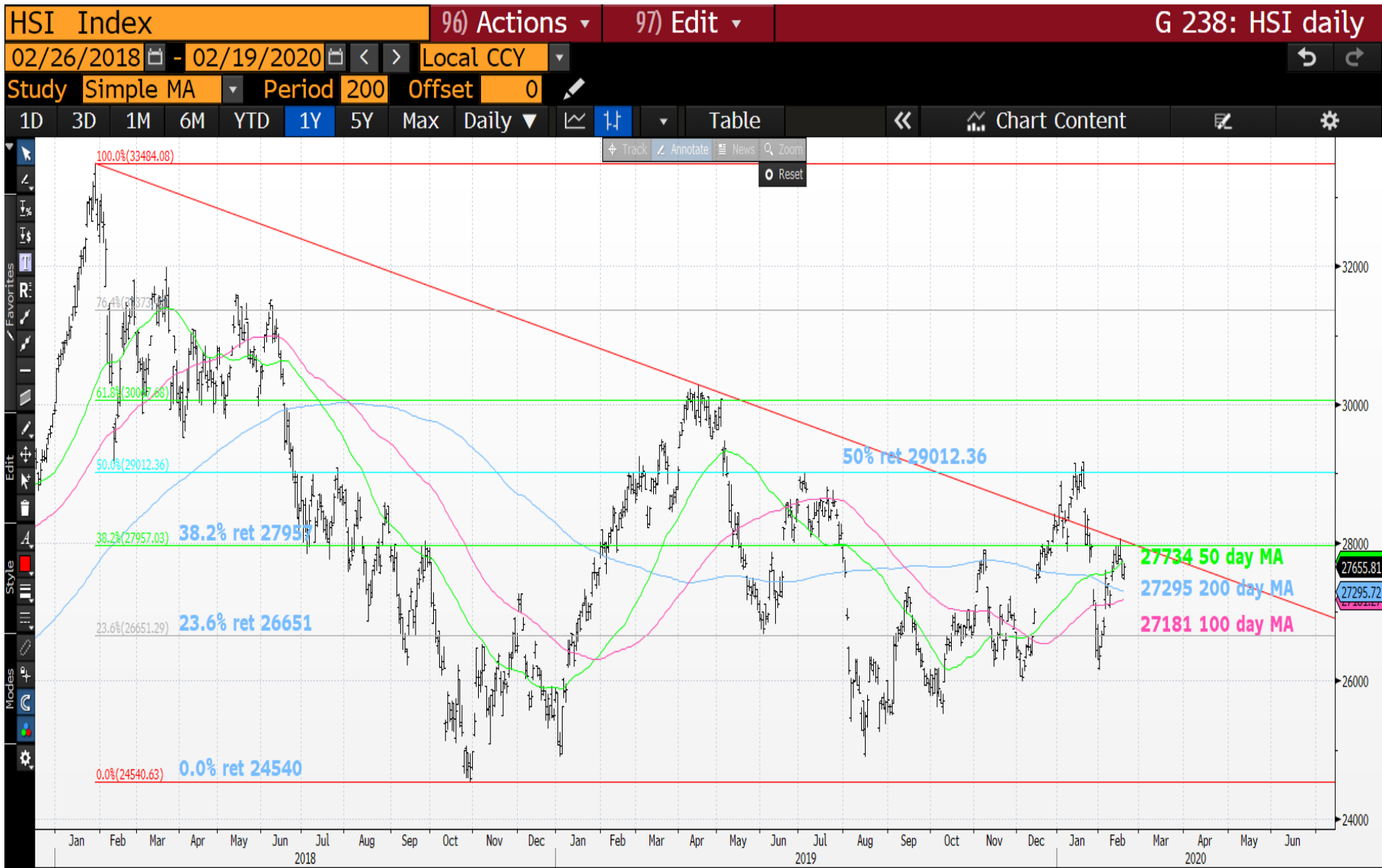
CCMP monthly : A relentless rally, lets see if the upper channel 8787 will help.



Hang Seng monthly : A HUGE problem if the 26140 moving average and 23.6% ret 25601.22 are breached.



Hang Seng daily : We continue to TEASE the 38.2% ret 27957.



This research was prepared by Chris Williams. He is a self-employed contractor with Astor Ridge. A history of his research can be provided upon request in compliance with the European Commission's Market Abuse Regulation.

Astor Ridge takes no proprietary trading risk, has no market making facilities, and has no position in any security we discuss in this e-mail. The views in this e-mail are those of the author(s) and are subject to change, and Astor Ridge has no obligation to update its opinions or the information in this publication. If this e-mail contains recommendations, those recommendations reflect solely and exclusively those of the author, and such opinions were prepared independently of any other interests, including those of Astor Ridge and/or its affiliates.

This publication does not constitute personal investment advice or take into account the individual financial circumstances or objectives of the clients who receive it. The securities discussed herein may not be suitable for all investors. Astor Ridge recommends that investors independently evaluate each issuer, security or instrument discussed herein, and consult any independent advisors they believe necessary.

The value of and income from any investment may fluctuate from day to day as a result of changes in relevant economic markets (including changes in market liquidity). The information herein is not intended to predict actual results, which may differ substantially from those reflected. Past performance is not necessarily indicative of future results.

You should not use or disclose to any other person the contents of this research, nor take copies. This is not a representation or warranty and is not intended nor should it be taken to create any legal relations, contractual or otherwise. This research and any files transmitted with it are confidential, may be legally privileged, and are for the sole use of the intended recipient. Copyright in this research and any accompanying document created by Astor Ridge LLP is owned by Astor Ridge LLP.

Astor Ridge LLP is regulated by the Financial Conduct Authority (FCA): Registration Number 579287

Astor Ridge LLP is Registered in England and Wales with Companies House: Registration Number OC372185

Astor Ridge NA LLP is a member of FINRA/SIPC: CRD Number 282626

Astor Ridge NA LLP is Registered in England and Wales with Companies House: Registration Number OC401796