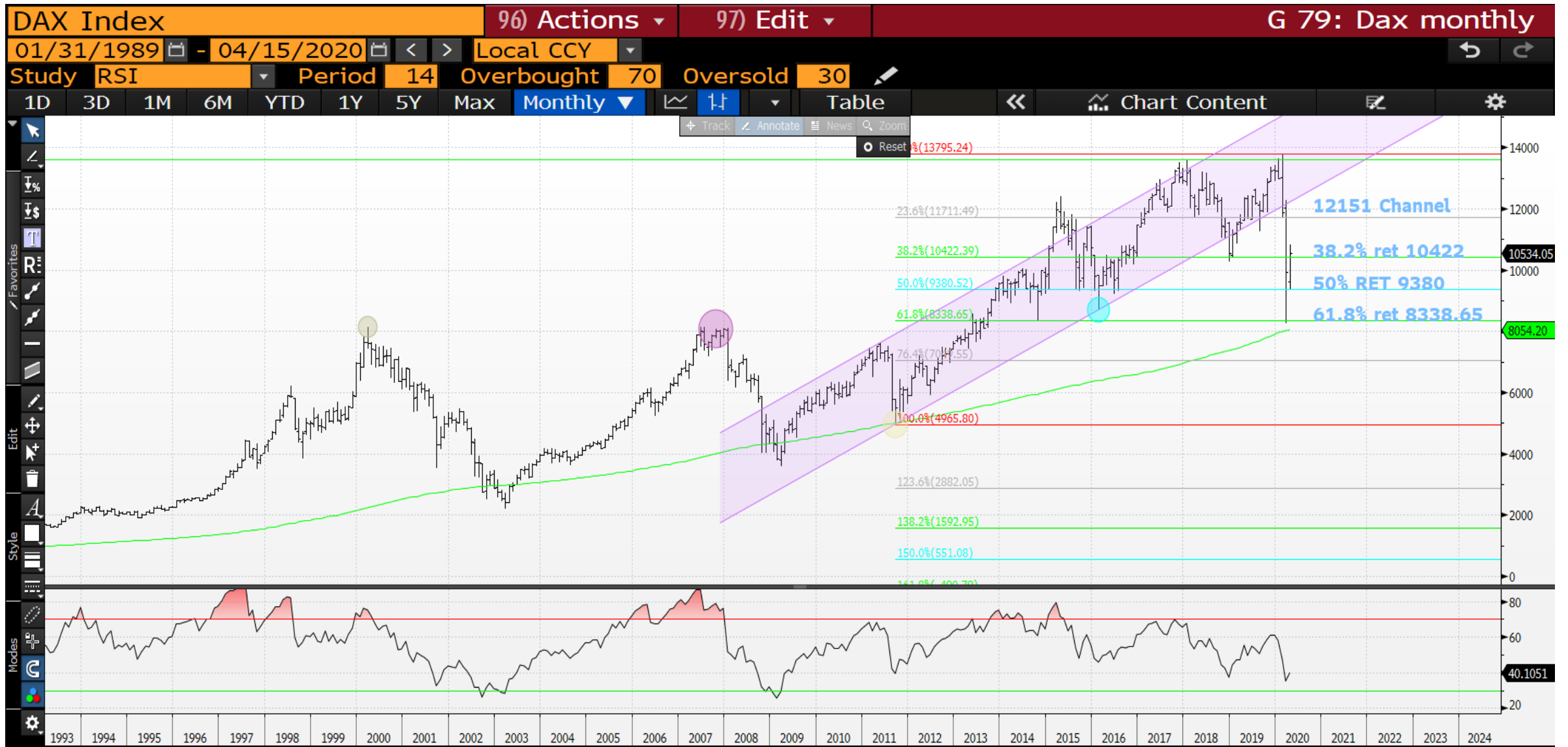


**EUROPEAN EQUITIES : ARE THEY ABOUT TO ASSIST THE EQUITY CALL LOWER GIVEN MANY ARE NOW STALLING! LETS SEE IF THEY IMPACT THE LATEST US BOUNCE?**

**WE HAVE WITNESSED SOME HEALTHY RECOVERIES MOSTLY IN US STOCKS BUT THE LATEST REJECTION IN EUROPE IS PITIFUL, 38.2% RETRACEMENTS IS NOT A GOOD REJECTION POINT.**

**WE COULD EASILY AND QUICKLY SEE THE LOWS AGAIN. WE STILL HAVE A LOT OF UNFINISHED BUSINESS GIVEN WE FAILED TO ACHIEVE 2008-09 RSI LOWS.**

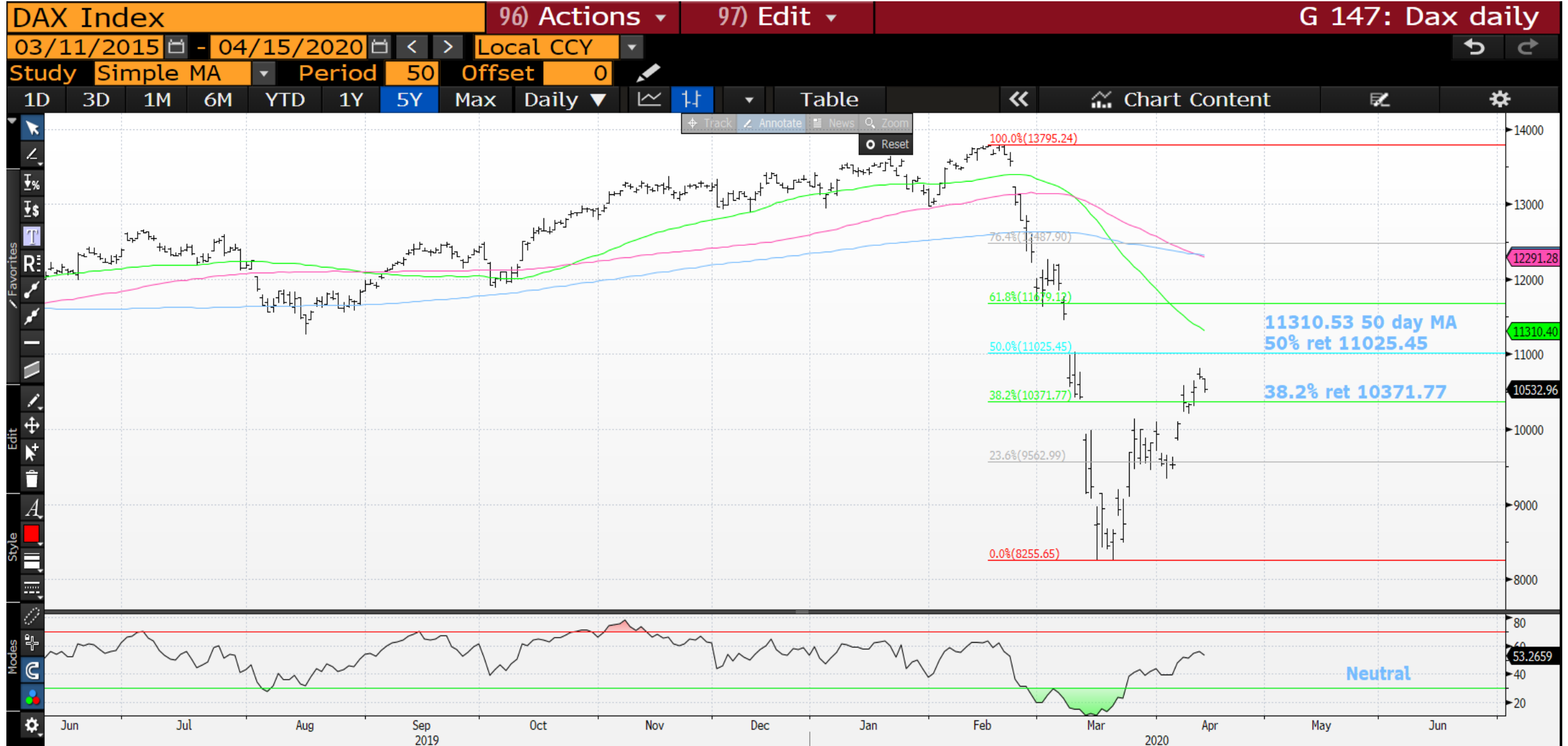
DAX monthly : The RSI is low but as previously mentioned had not hit the 2008-09 favoured dislocation.



DAX weekly : We did extend to 2008 and 2011 levels but we appear to be stalling now.

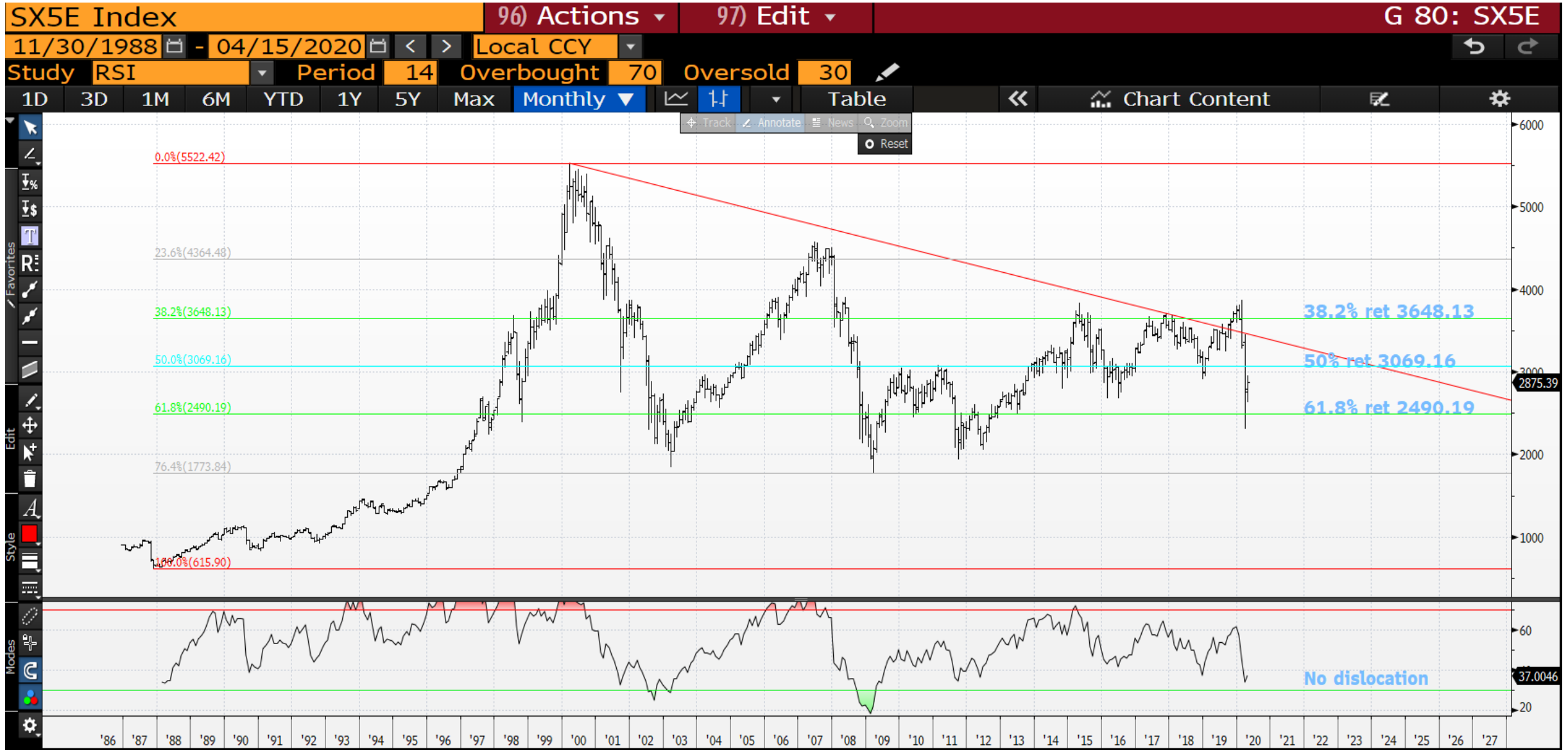


DAX daily : This RSI is now VERY neutral and a breach of the 38.2% ret 10371.77 will confirm we head lower.

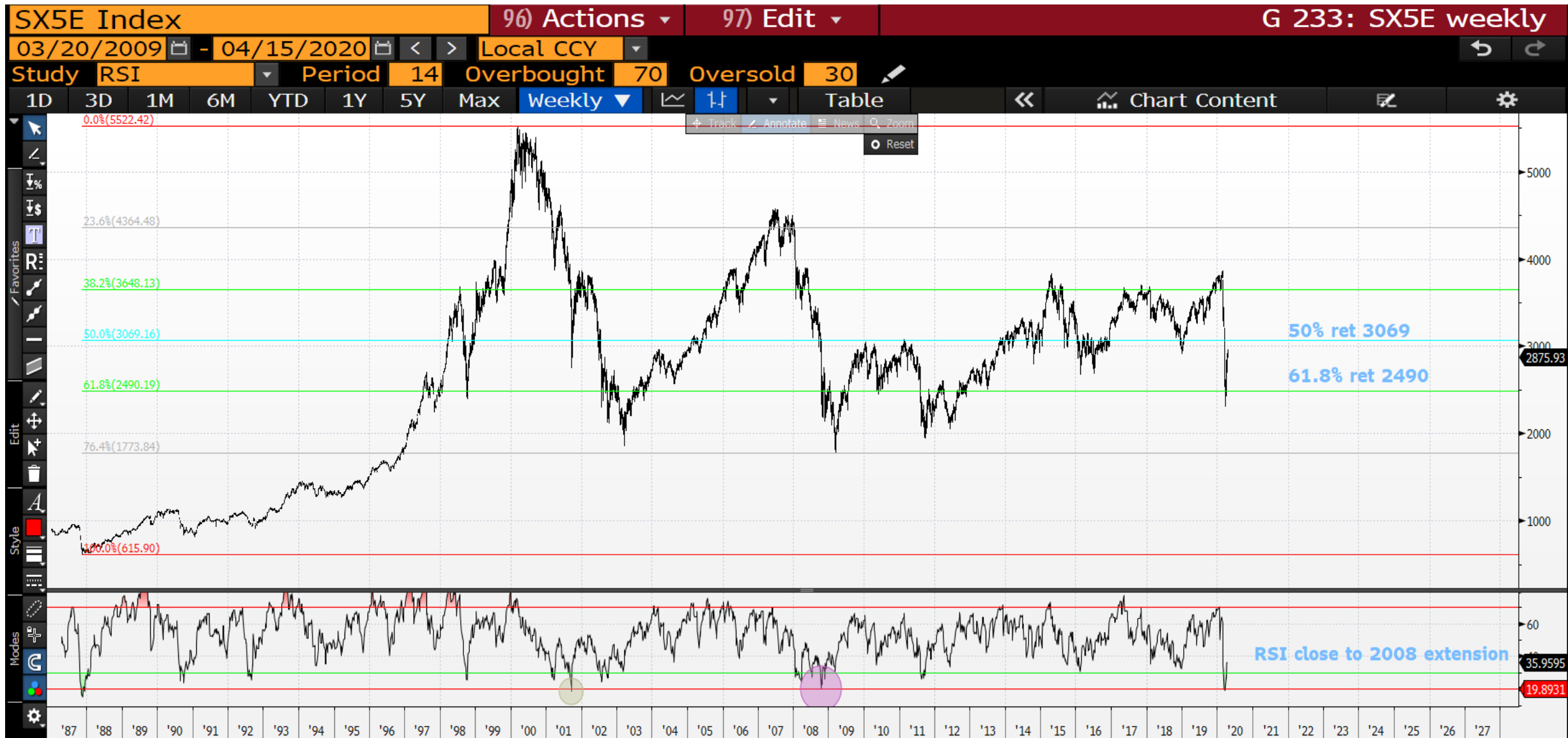


15/04/2020

Eurostox monthly : No major dislocation but we are close, maybe we need to visit the 61.8% ret 2490.19 first.

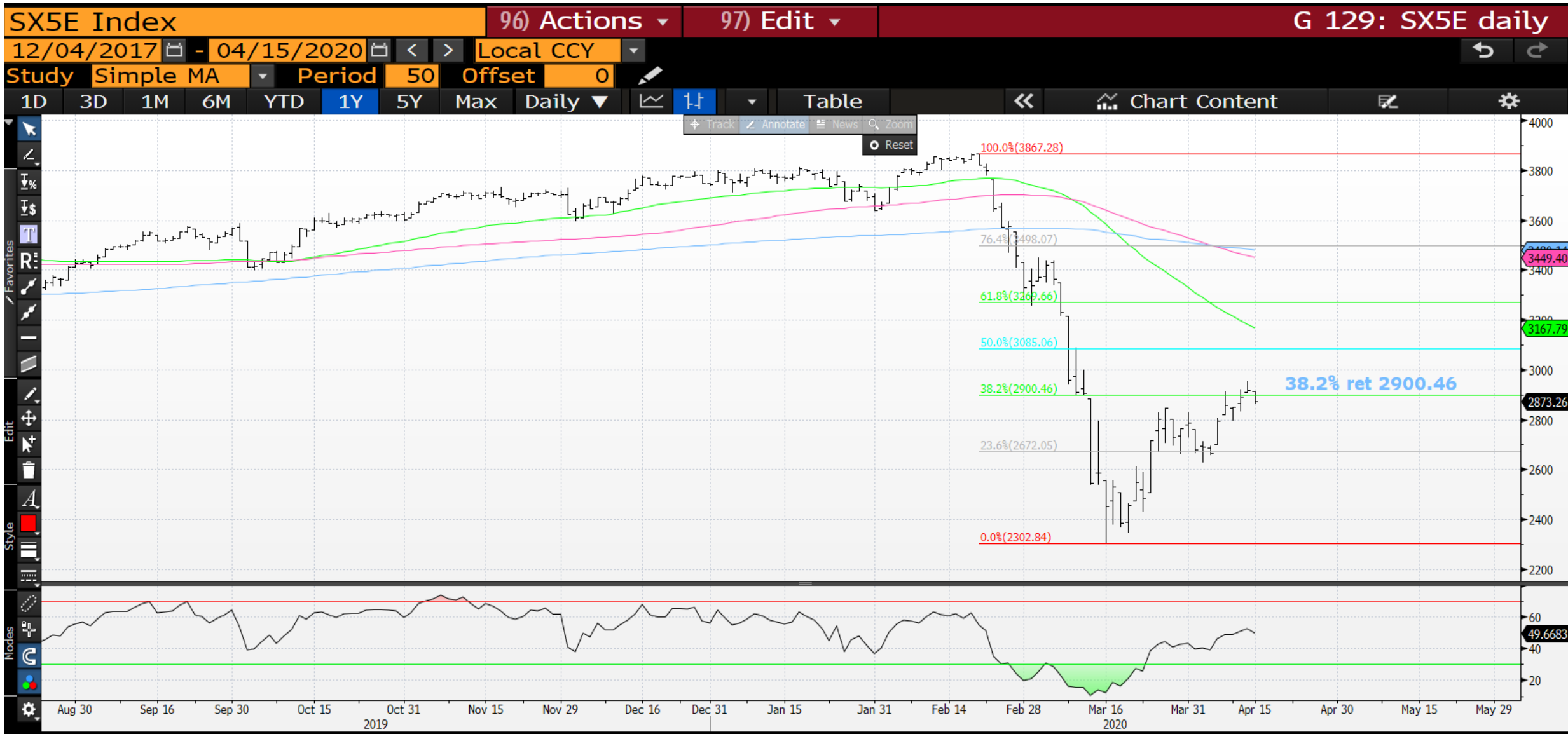


Eurostoxx weekly : Again the weekly RSI hit 2001 and 2008 dislocation levels.



15/04/2020

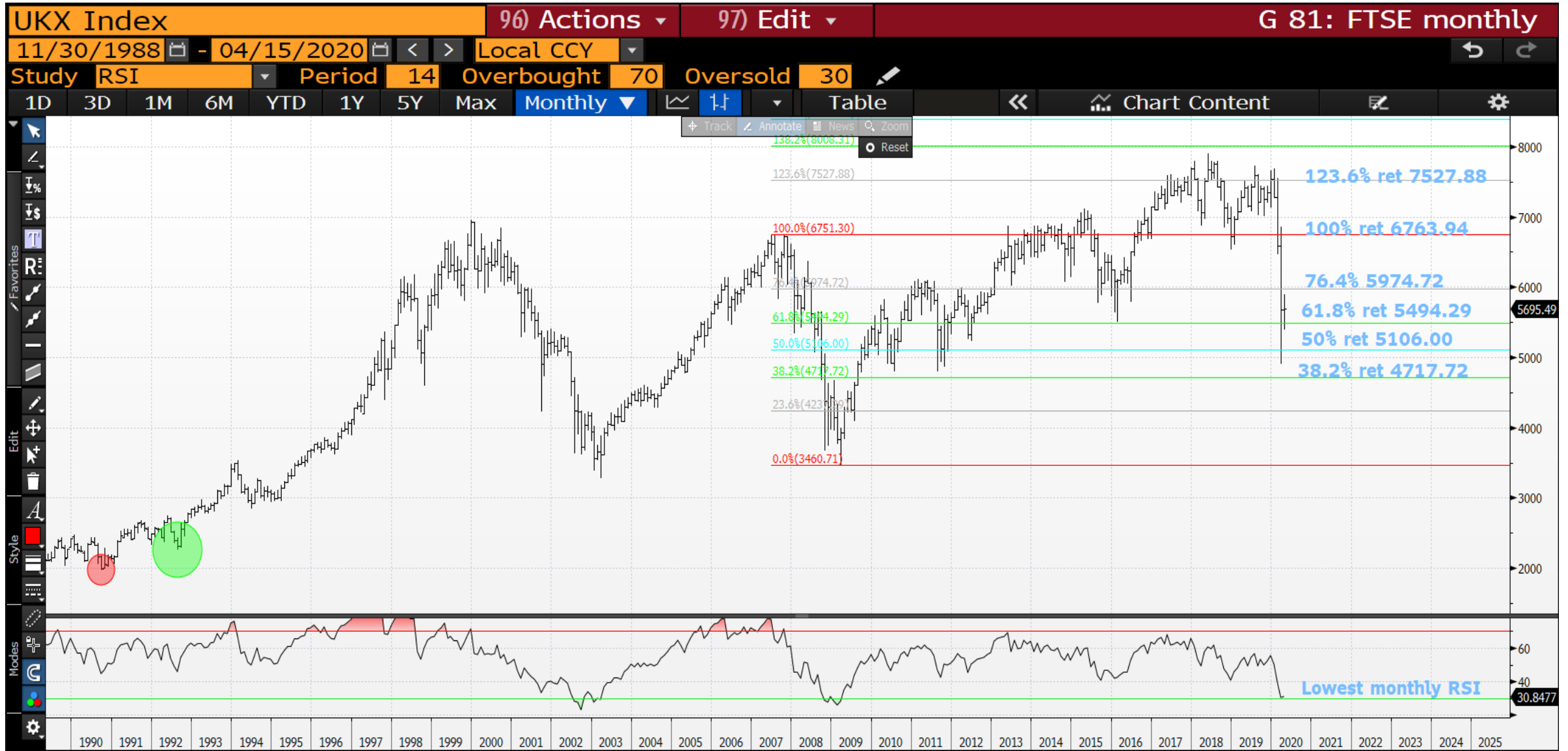
Eurostoxx daily : \*\* ONE to watch today given we are failing a measly 38.2% ret 2900.46 bounce. \*\*



15/04/2020



FTSE monthly : The bounce here has been minimal that despite the low RSI.



15/04/2020

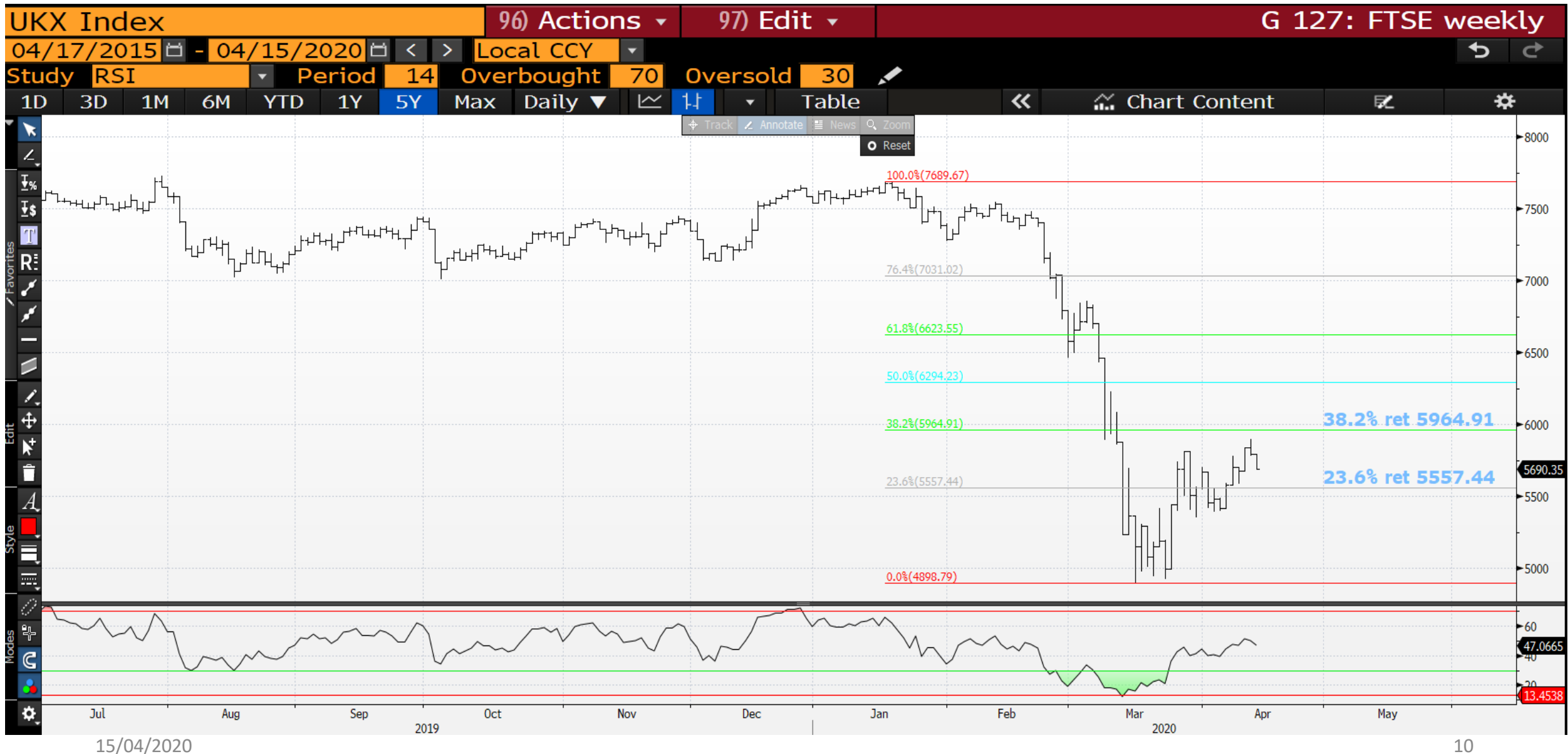


FTSE weekly : This RSI needs no explanation but we are now off the lows.



15/04/2020

FTSE daily : Another disappointment given we have ONLY managed a bounce to the 38.2% ret 5964.91. The RSI is neutral thus another one to watch today.



This research was prepared by Chris Williams. He is a self-employed contractor with Astor Ridge. A history of his research can be provided upon request in compliance with the European Commission's Market Abuse Regulation.

Astor Ridge takes no proprietary trading risk, has no market making facilities, and has no position in any security we discuss in this e-mail. The views in this e-mail are those of the author(s) and are subject to change, and Astor Ridge has no obligation to update its opinions or the information in this publication. If this e-mail contains recommendations, those recommendations reflect solely and exclusively those of the author, and such opinions were prepared independently of any other interests, including those of Astor Ridge and/or its affiliates.

This publication does not constitute personal investment advice or take into account the individual financial circumstances or objectives of the clients who receive it. The securities discussed herein may not be suitable for all investors. Astor Ridge recommends that investors independently evaluate each issuer, security or instrument discussed herein, and consult any independent advisors they believe necessary.

The value of and income from any investment may fluctuate from day to day as a result of changes in relevant economic markets (including changes in market liquidity). The information herein is not intended to predict actual results, which may differ substantially from those reflected. Past performance is not necessarily indicative of future results.

You should not use or disclose to any other person the contents of this research, nor take copies. This is not a representation or warranty and is not intended nor should it be taken to create any legal relations, contractual or otherwise. This research and any files transmitted with it are confidential, may be legally privileged, and are for the sole use of the intended recipient. Copyright in this research and any accompanying document created by Astor Ridge LLP is owned by Astor Ridge LLP.

Astor Ridge LLP is regulated by the Financial Conduct Authority (FCA): Registration Number 579287

Astor Ridge LLP is Registered in England and Wales with Companies House: Registration Number OC372185

Astor Ridge NA LLP is a member of FINRA/SIPC: CRD Number 282626

Astor Ridge NA LLP is Registered in England and Wales with Companies House: Registration Number OC401796