

BOND UPDATE : YIELDS HAVE INITIATED THEIR “DROP” BUT THE HARD PART IS COMPREHENDING HOW FAR IT HAS TO GO AND HOW FLAT CURVES WILL BECOME. IT IS WORTH SPENDING TIME LOOKNG AT ALL MONTHLY CHARTS AS THIS IS A REPLICATION OF 2008!

SPECIAL MENTION TO THE US 30YR YIELD CHART FAILING SO MANY PROFOUND LEVELS.

GET READY TO PARTY LIKE 1994! THE HISTORICAL-TECHNICAL PICTURE HIGHLIGHTS A SWATHE OF 1994 RSI EXTENSIONS WHICH ARE VERY OBVIOUSLY EXCEPTIONAL!

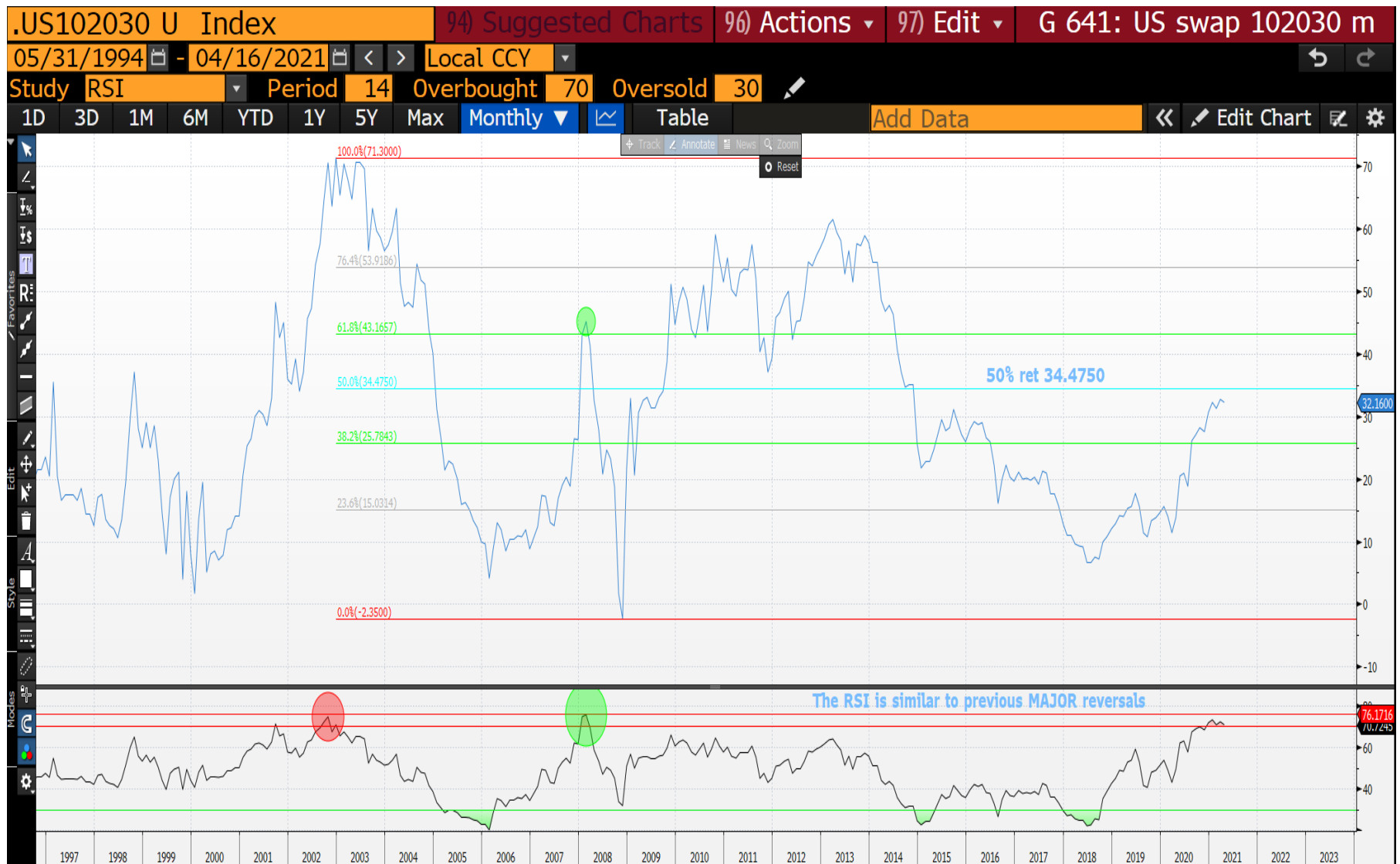
ESSENTIALLY THESE TECHNICAL DISLOCATIONS ARE HISTORICALLY UNSUSTAINABLE.

US 30YR YIELDS HAVE HIT THE 50 PERIOD MONTHLY MOVING AVERAGE 2.4556 (PAGE 9).

US 10YR YIELD RSI DISLOCATION IS THE MOST SINCE “1994”!

US BOND AND SWAP CURVES CONTINUE TO “SCREAM” FOR A MAJOR FLATTENING GIVEN THE HISTORICAL RSI DISLOCATION. THE OTHER POINTER IS THE 102030 SWAP CURVES CONTINUES TO INDICATE THE 20YR IS “OUT OF LINE” WITH THE WINGS!

US102030 Swap monthly : We are forming a TOP and look what happened in 2008! If so that implies technically all value is in the 20yr part of the curve over the wings.



US 5-30 Swap monthly : This time the RSI is lofty matching that of 2008 AND what a move that was! We have STALLED PERFECTLY at the previous 115.713 high. Historically we should head lower from here and the flattening has ONLY JUST started!



US 5-30 monthly : The RSI remains high and best of all we have created a perfect double top at the 38.2% ret 166.202.



16/04/2021

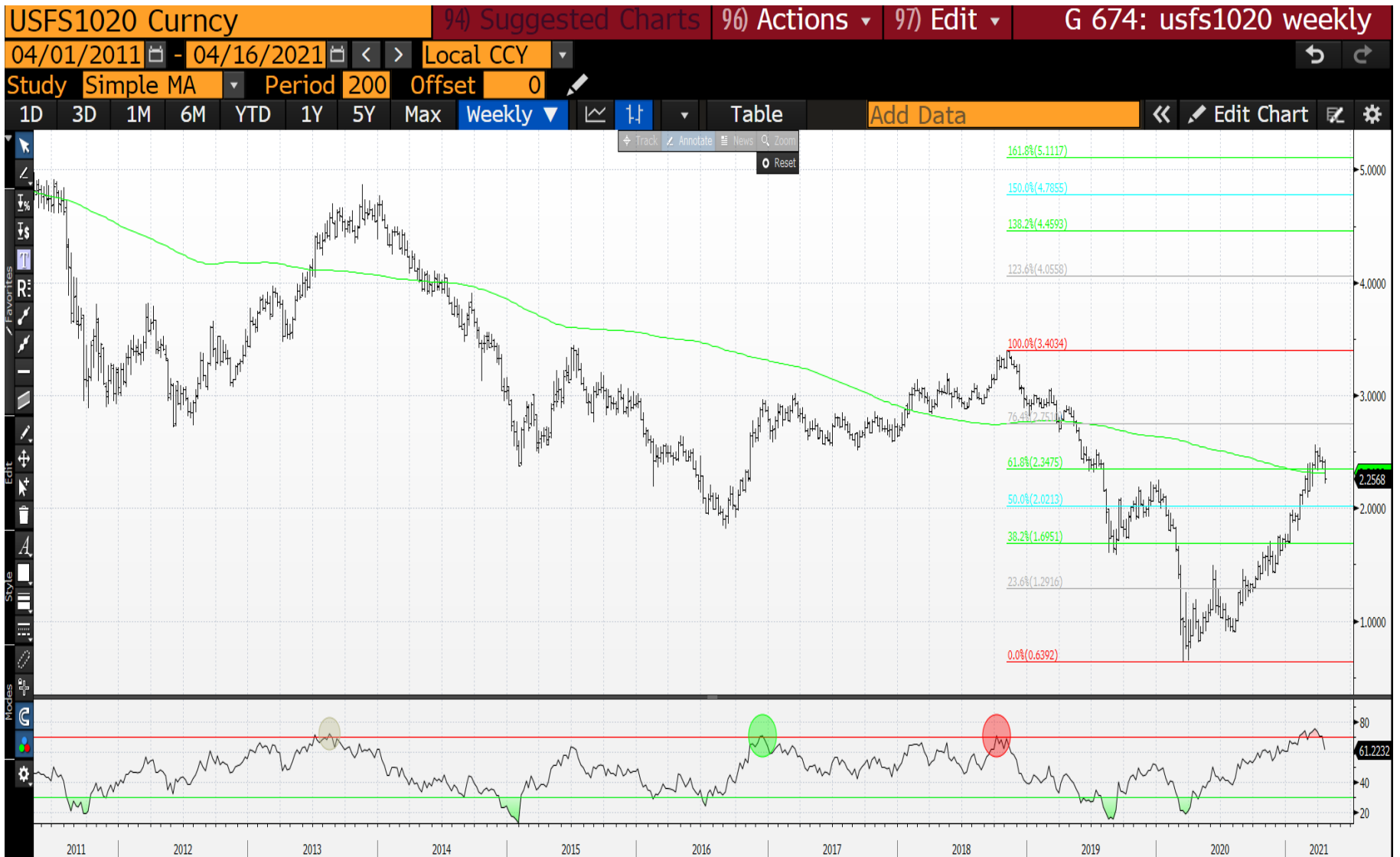
US 10-30 Swap monthly : The RSI is similar to 2008 and we are seeing a rejection of the 50% ret 45.0500. The 2008 move was menacing! The curve is continuing to flatten and should mean yields stall.



US 10-30 monthly : The RSI is muted and ideally we need to breach the multiyear 50% ret 53.918.



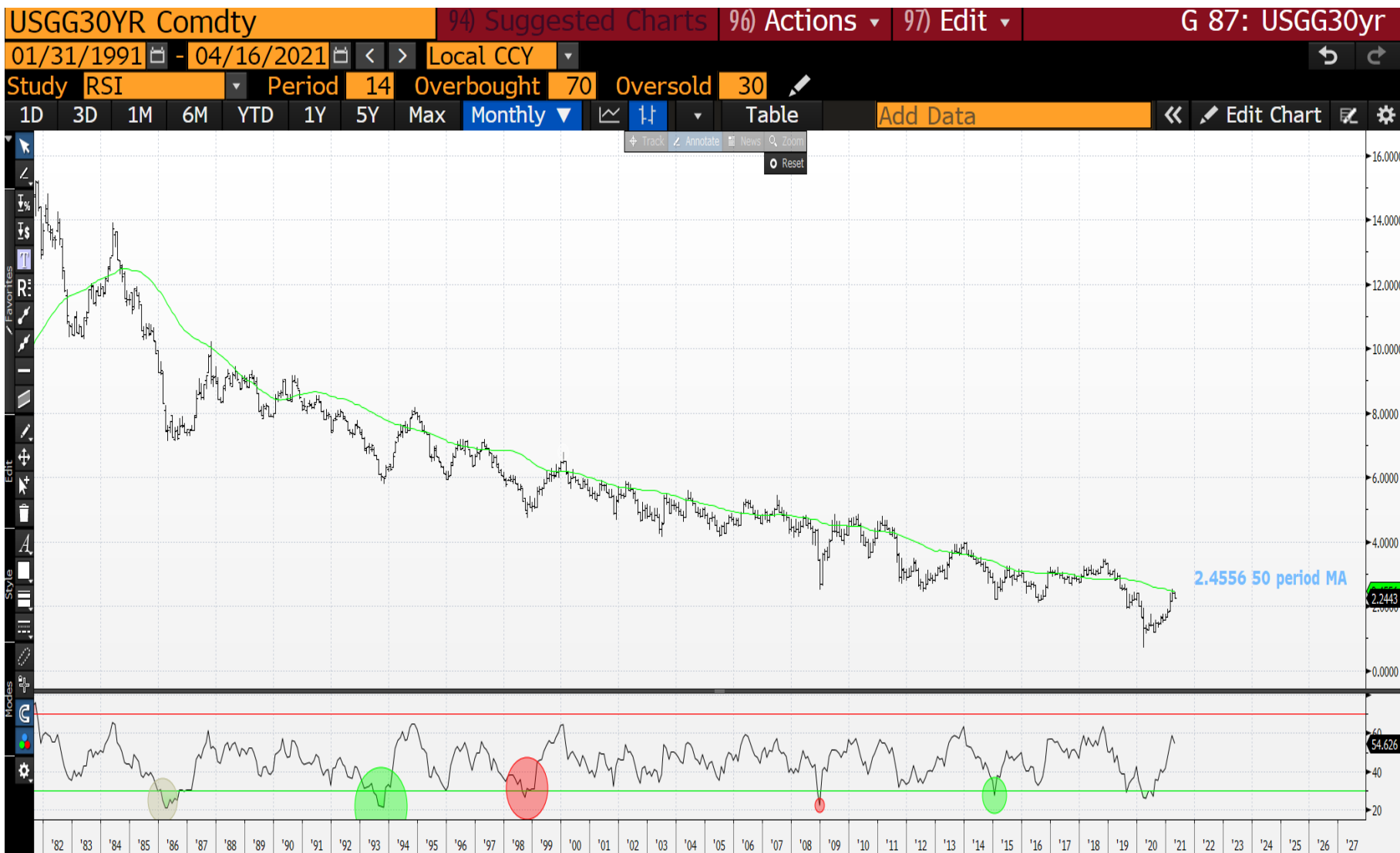
US 10-20 Swap weekly : Certainly a chart to watch given we have created an upside negative PIERCE whilst confirming failure with a PUSH sub the 2.3134 moving average.



USGG30yr quarterly : This RSI is now lofty and we are teasing the 2.5090 2008 low.



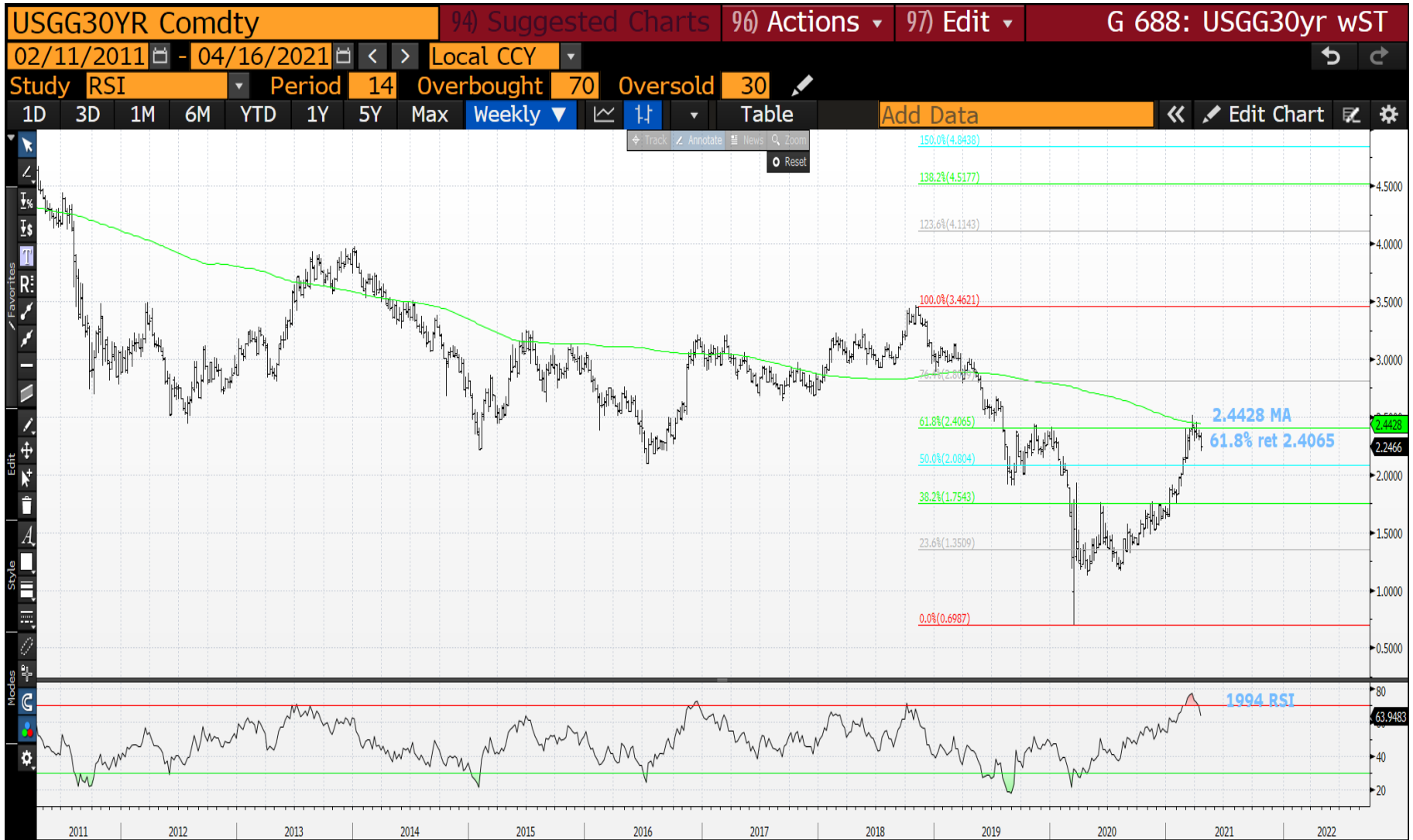
USGG30yr monthly : This RSI is lofty as we hit and reject the 50 period moving average 2.4556. This could be the perfect top given the accelerated move higher.



USGG30yr weekly : The RSI continues to REMAIN extended at a level last recorded in 1994, this level of extension is repeated in the following charts. This chart replicates the previous one given we have failed the 200 period moving average 2.4428.



USGG30yr weekly : To underline the TOP we have also failed the 61.8% ret 2.4065.



US 10yr yield quarterly : This RSI isn't too pronounced nor a relevant resistance level.



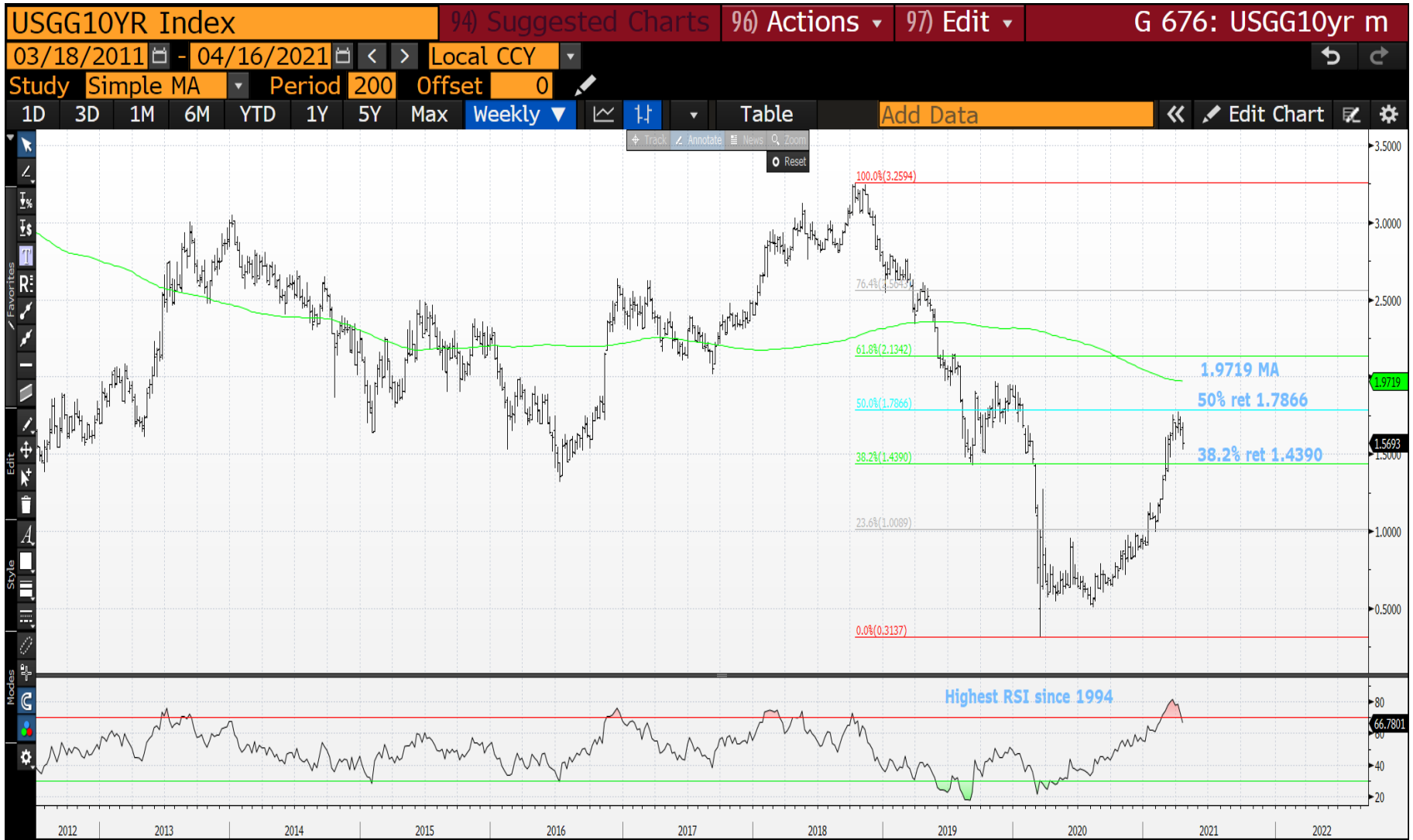
US 10yr yield monthly : We have a LOFTY RSI and poised to fail the 1.9663 50 period moving average.



US 10yr yield weekly : A VERY important RSI dislocation given it is the HIGHEST since 1994 and it hasn't abated!



US 10yr yield weekly : Same chart as before with signs of a rejection of the 50% ret 1.7866, breaching the 38.2% ret 1.4390 will be key.



CAD 10yr yield weekly : This too has an RSI dislocation last witnessed in 1994 whilst we flirt with the 1.567 200 period moving average. Historically this extension is wrong and HUGE scope to see yields head lower.



US 5yr yield quarterly : Little here RSI wise nor level wise.



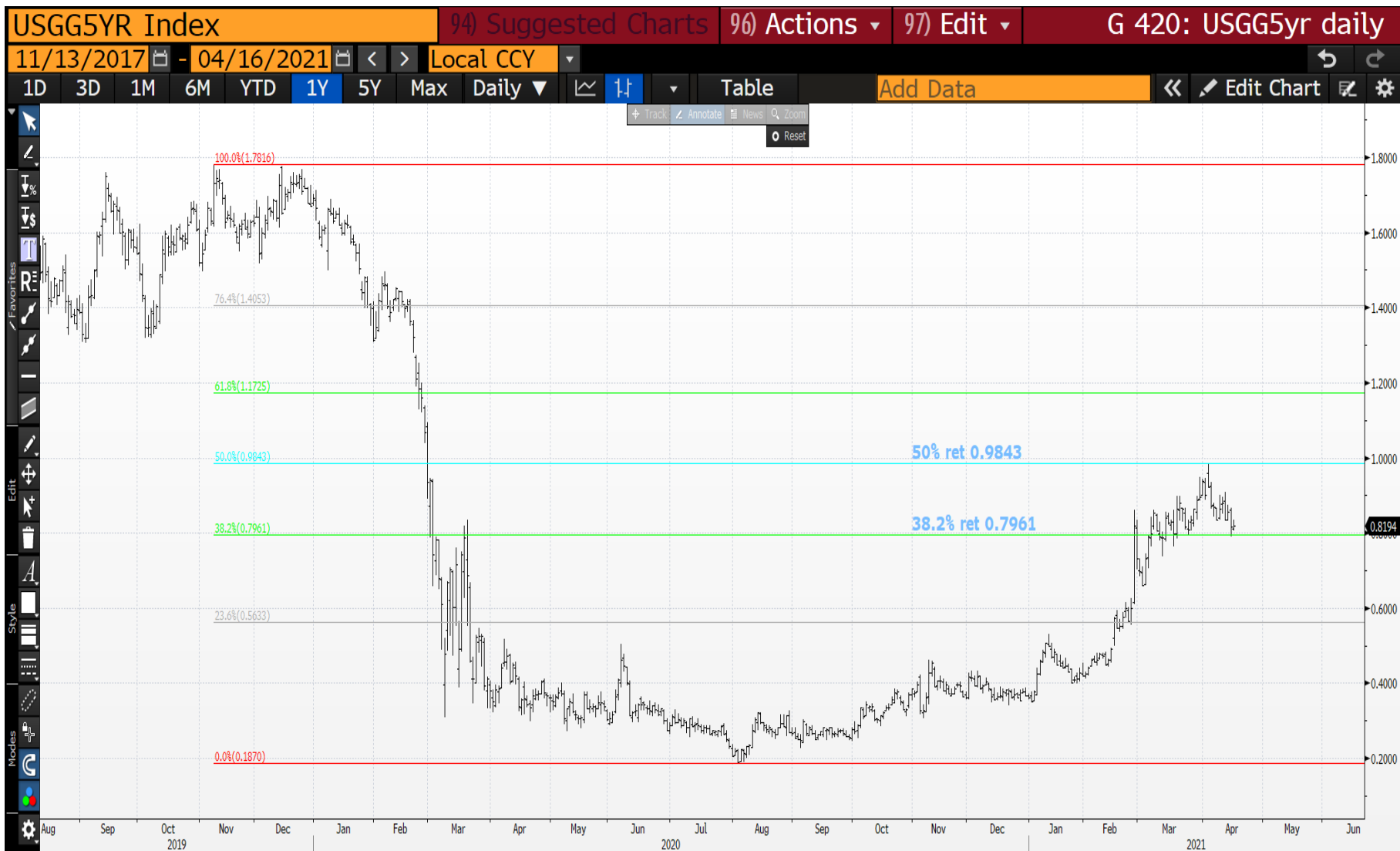
US 5yr yield monthly : The RSI is more lofty but no level available.



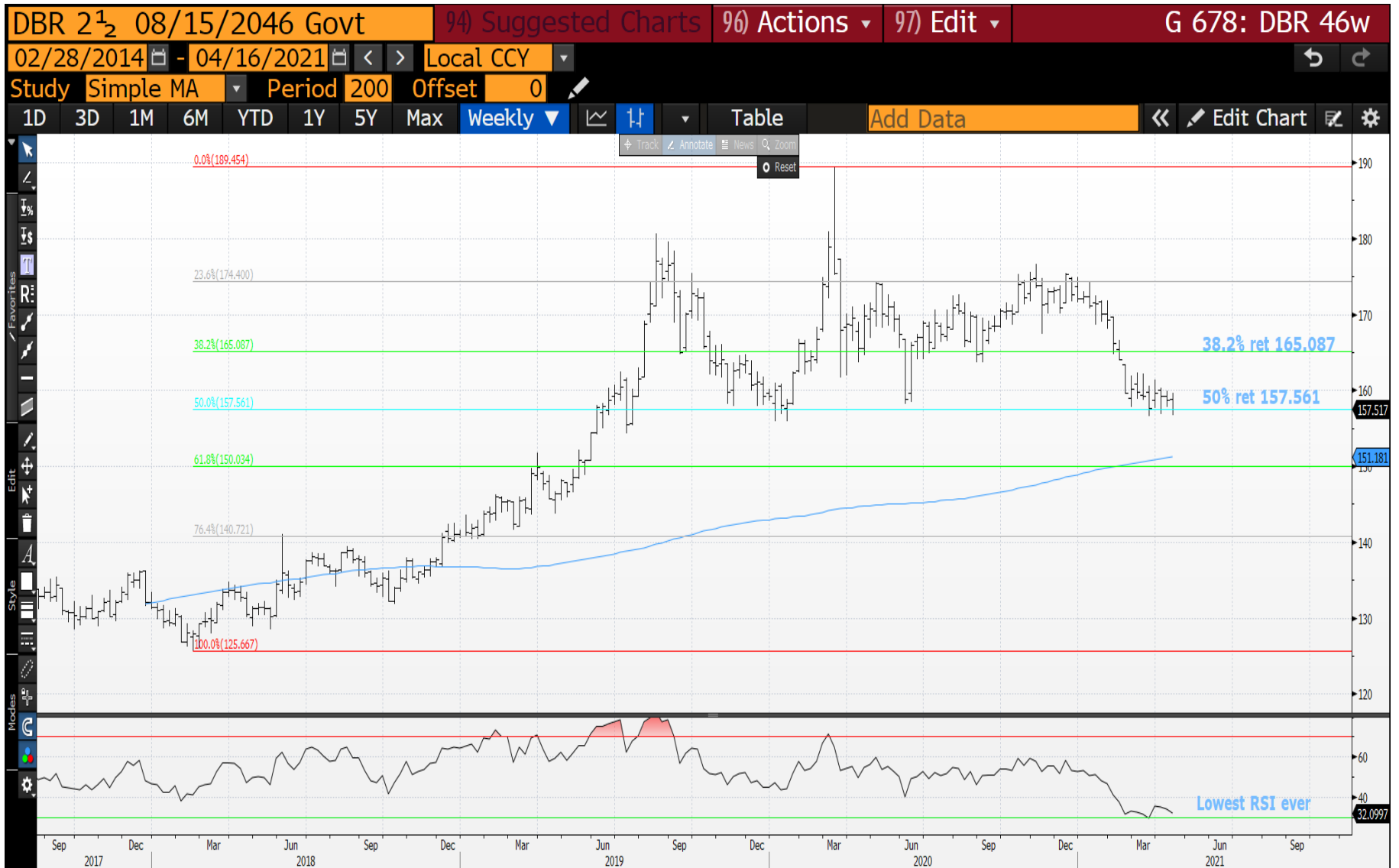
US 5yr yield weekly : We have breached the 23.6% ret 0.8737 so hopefully can remain below it and pick up the momentum.



US 5yr yield daily : A VERY NICE hit and failure of the 50% ret 0.9843, just need to breach the 38.2% ret 0.7961.



DBR 46 weekly : This RSI is the LOWEST ever!



This research was prepared by Chris Williams. He is a self-employed contractor with Astor Ridge. A history of his research can be provided upon request in compliance with the European Commission's Market Abuse Regulation.

Astor Ridge takes no proprietary trading risk, has no market making facilities, and has no position in any security we discuss in this e-mail. The views in this e-mail are those of the author(s) and are subject to change, and Astor Ridge has no obligation to update its opinions or the information in this publication. If this e-mail contains recommendations, those recommendations reflect solely and exclusively those of the author, and such opinions were prepared independently of any other interests, including those of Astor Ridge and/or its affiliates.

This publication does not constitute personal investment advice or take into account the individual financial circumstances or objectives of the clients who receive it. The securities discussed herein may not be suitable for all investors. Astor Ridge recommends that investors independently evaluate each issuer, security or instrument discussed herein, and consult any independent advisors they believe necessary.

The value of and income from any investment may fluctuate from day to day as a result of changes in relevant economic markets (including changes in market liquidity). The information herein is not intended to predict actual results, which may differ substantially from those reflected. Past performance is not necessarily indicative of future results.

You should not use or disclose to any other person the contents of this research, nor take copies. This is not a representation or warranty and is not intended nor should it be taken to create any legal relations, contractual or otherwise. This research and any files transmitted with it are confidential, may be legally privileged, and are for the sole use of the intended recipient. Copyright in this research and any accompanying document created by Astor Ridge LLP is owned by Astor Ridge LLP.

Astor Ridge LLP is regulated by the Financial Conduct Authority (FCA): Registration Number 579287

Astor Ridge LLP is Registered in England and Wales with Companies House: Registration Number OC372185

Astor Ridge NA LLP is a member of FINRA/SIPC: CRD Number 282626

Astor Ridge NA LLP is Registered in England and Wales with Companies House: Registration Number OC401796