

US BREAKEVENS : ARE 5 YR BREAKEVENS SHOWING THE OTHERS THE WAY FORWARD GIVEN THEY ARE SUB THEIR 50 DAY MOVING AVERAGE. OVERALL CHART WISE WE ARE LOOKING AT SOME VERY “MAJOR” LONGTERM TOPS!

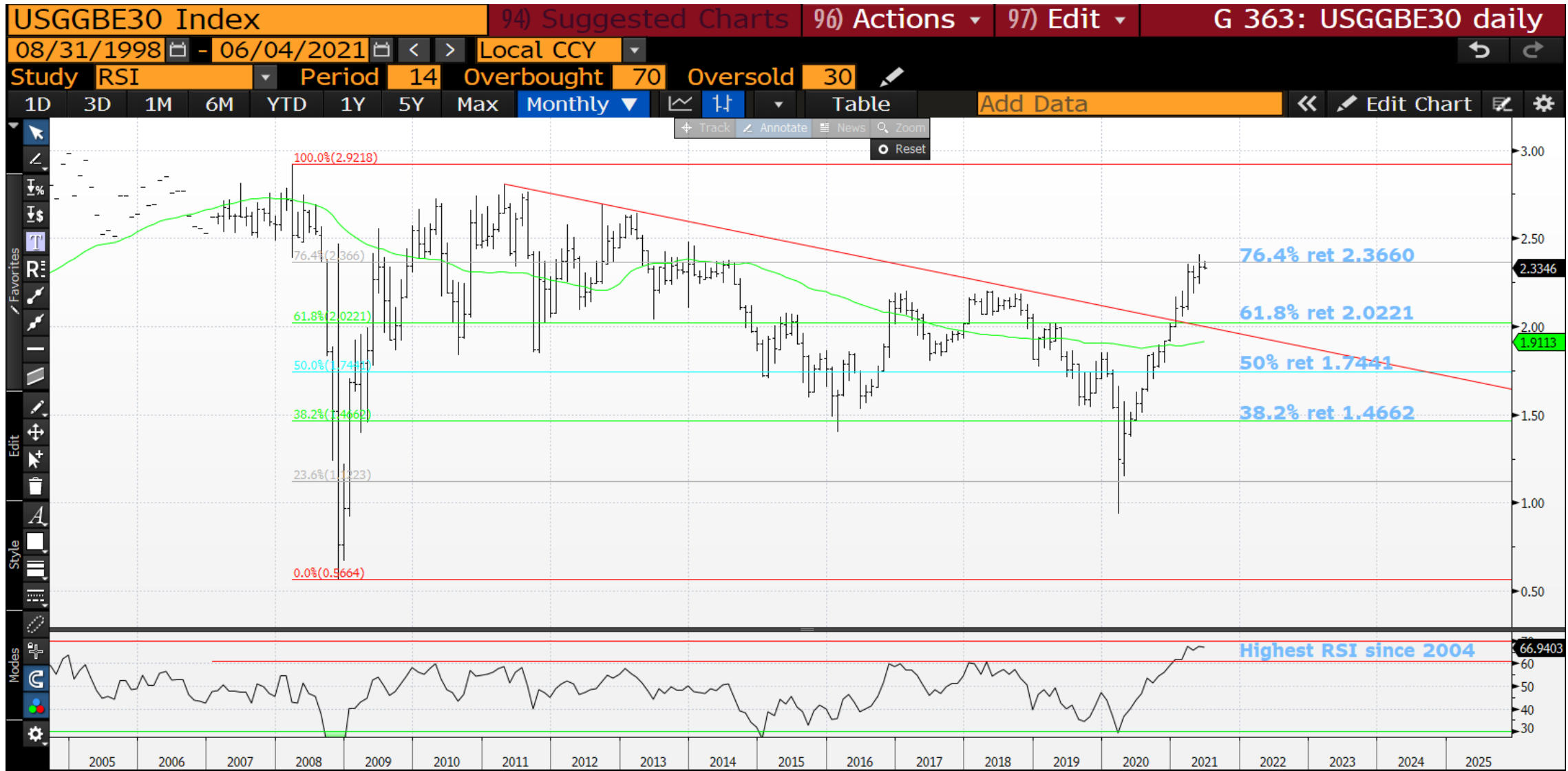
WE COULD BE LOOKING AT “VERY” LONGTERM TOPS GIVEN SO MANY RSI’S REMAIN DISLOCATED, THE PROVISIO IS LAST MONTHS HIGHS ARE RETAINED. THIS WILL GET VERY MESSY IF WE START FAILING, SOME KEY LEVELS LISTED WITHIN THE CHARTS.

30YR BREAKEVEN HAVE REJECTED THE MULTI YEAR 76.4% RET 2.3360 WITH A 2004 MONTHLY RSI.

5YR BREAKEVENS HAVE REJECTED THE HIGH SET IN 2008 AND ARE NOW THEIR 50 DAY MOVING AVERAGE 2.6198.

****ALL 3 DURATIONS OF CHARTS HAVE RSI’S THAT COMPLIMENT EACH OTHER ACROSS THE BREAKEVEN CURVE.****

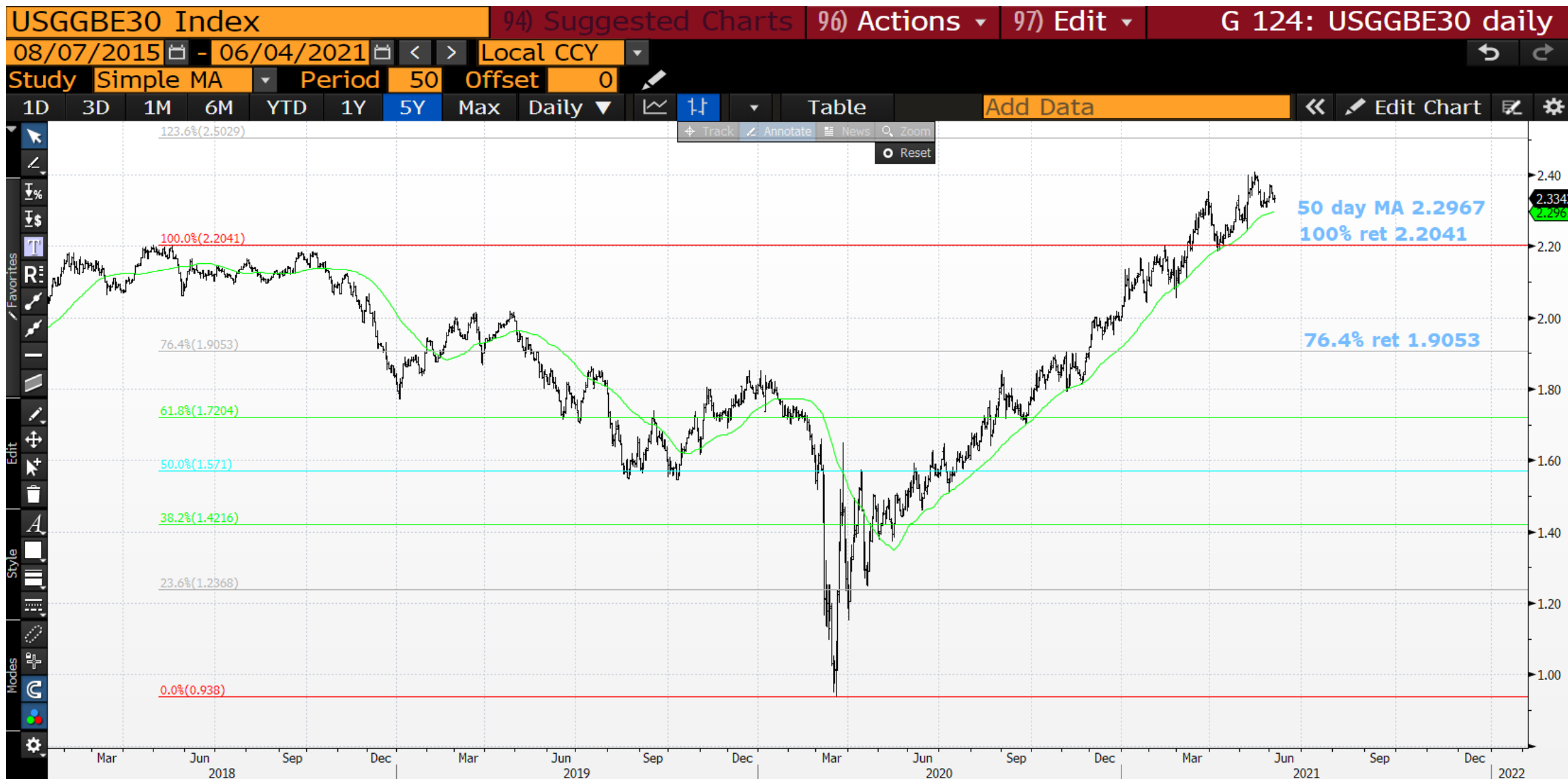
USGGBE30 monthly : The ideal situation this month is we fail directly from the 76.4% ret 2.3660, this should happen given the 2004 RSI. Also last months high needs to remain.



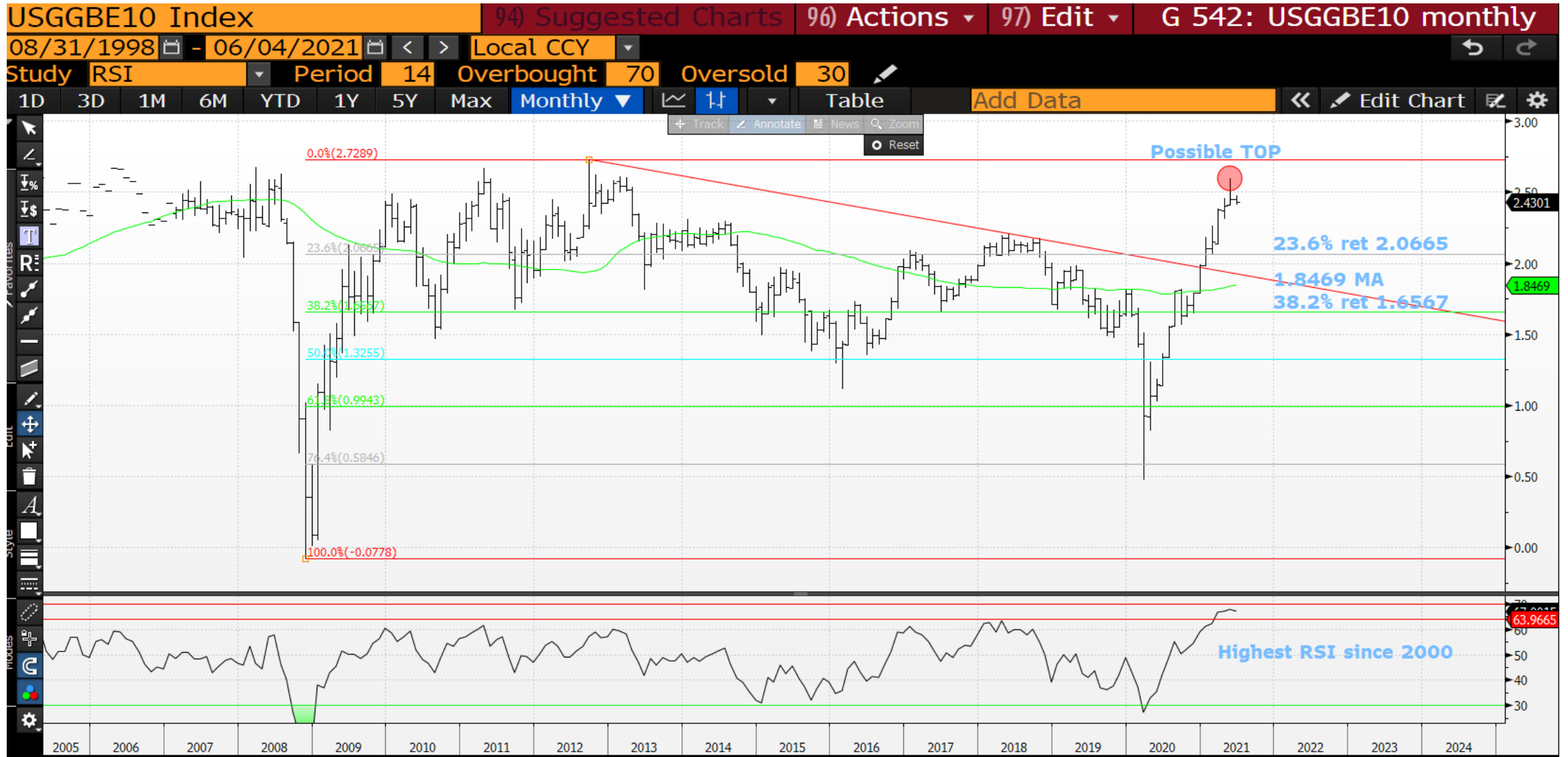
USGGBE30 weekly : We continue to tease the channel, am sure it will be breached soon.



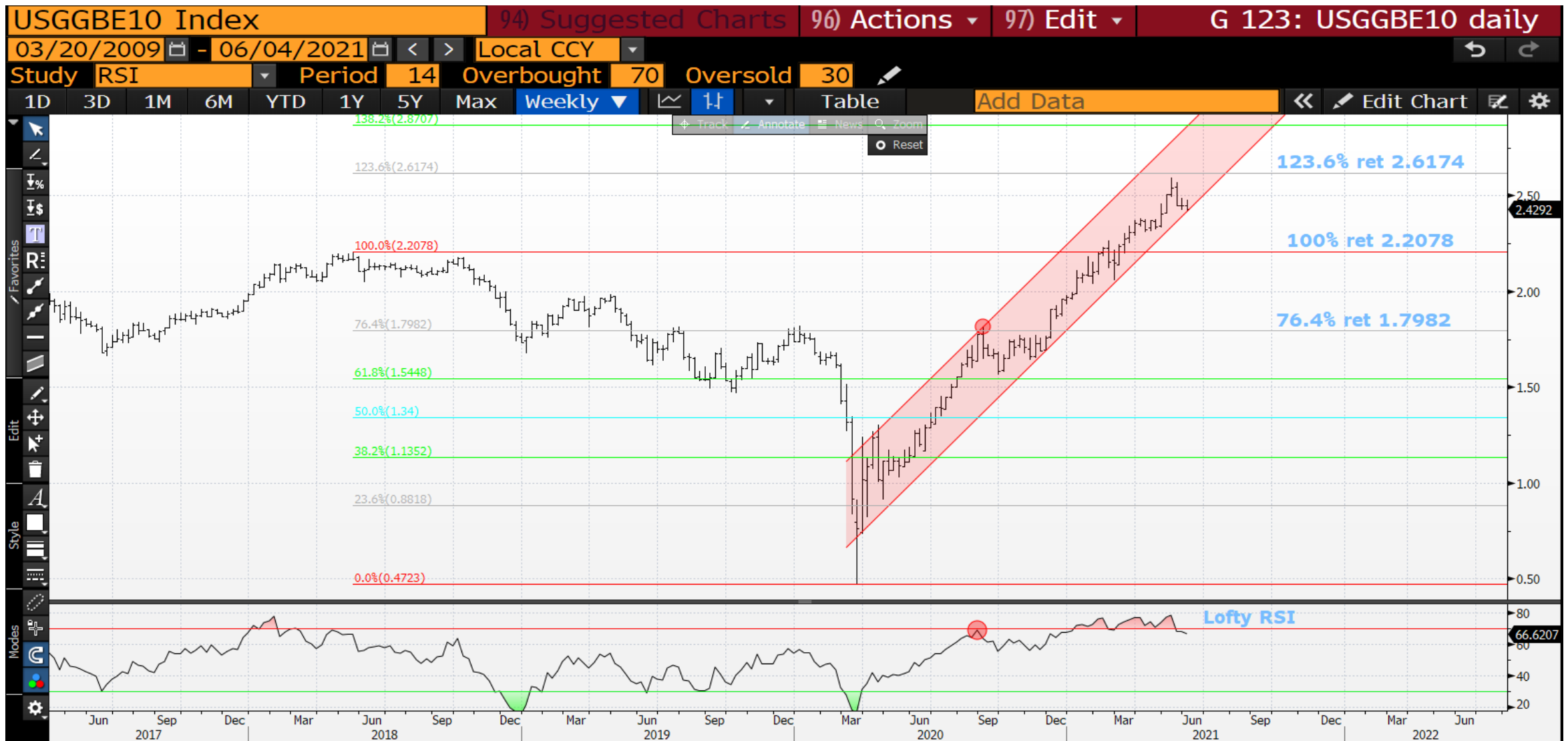
USGGBE30 daily : As yet no indications of a top looming but sub the 50 day moving average 2.2967 would be a great help.



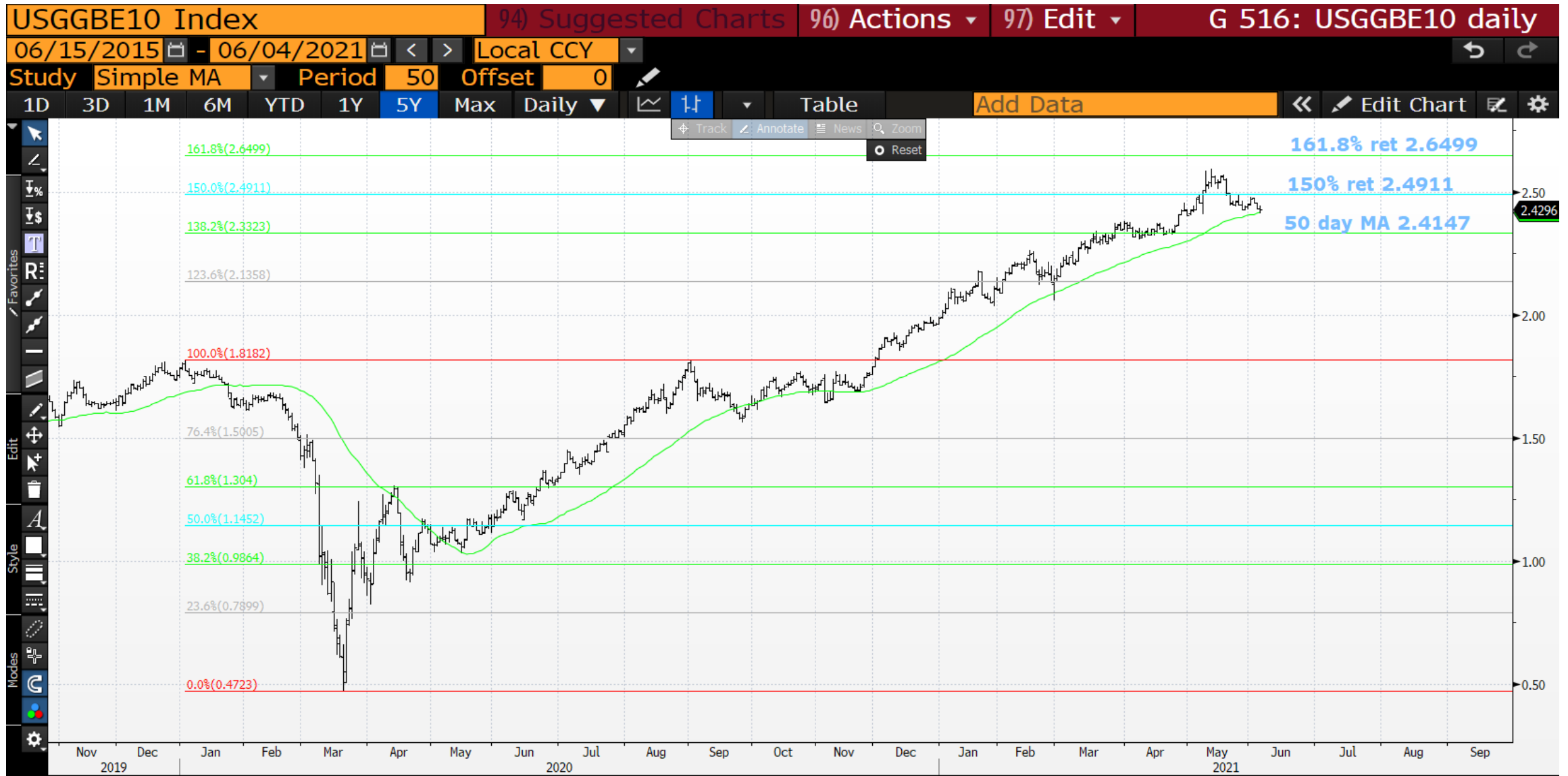
USGGBE10 monthly : Do we have a top, IDEALLY we do given the RSI and opening near last months low 2.4041. If we do head lower then this could be NASTY and SUSTAINED.



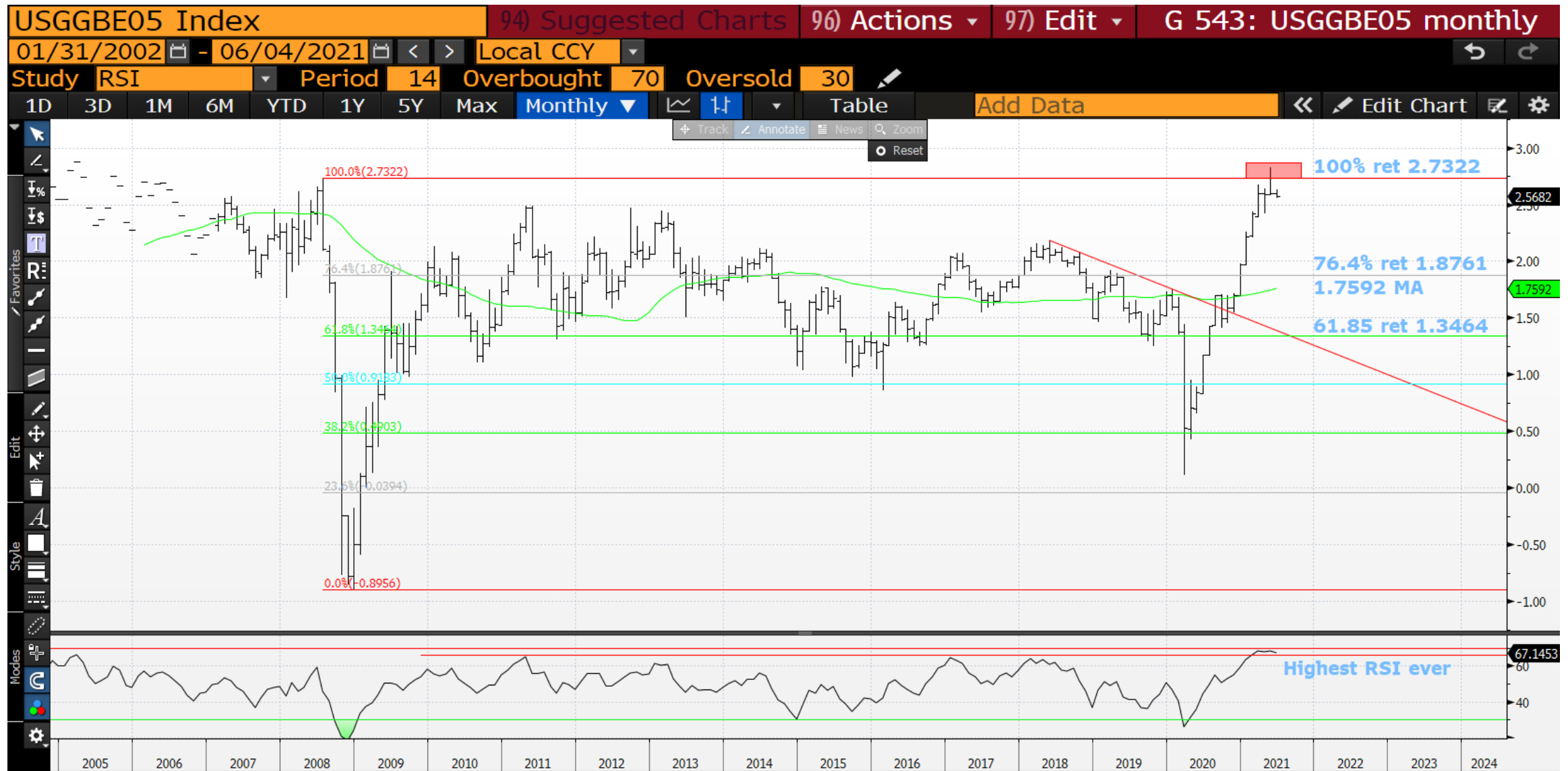
USGGBE10 weekly : Another weekly chart nudging the trend channel with every chance it is breached.



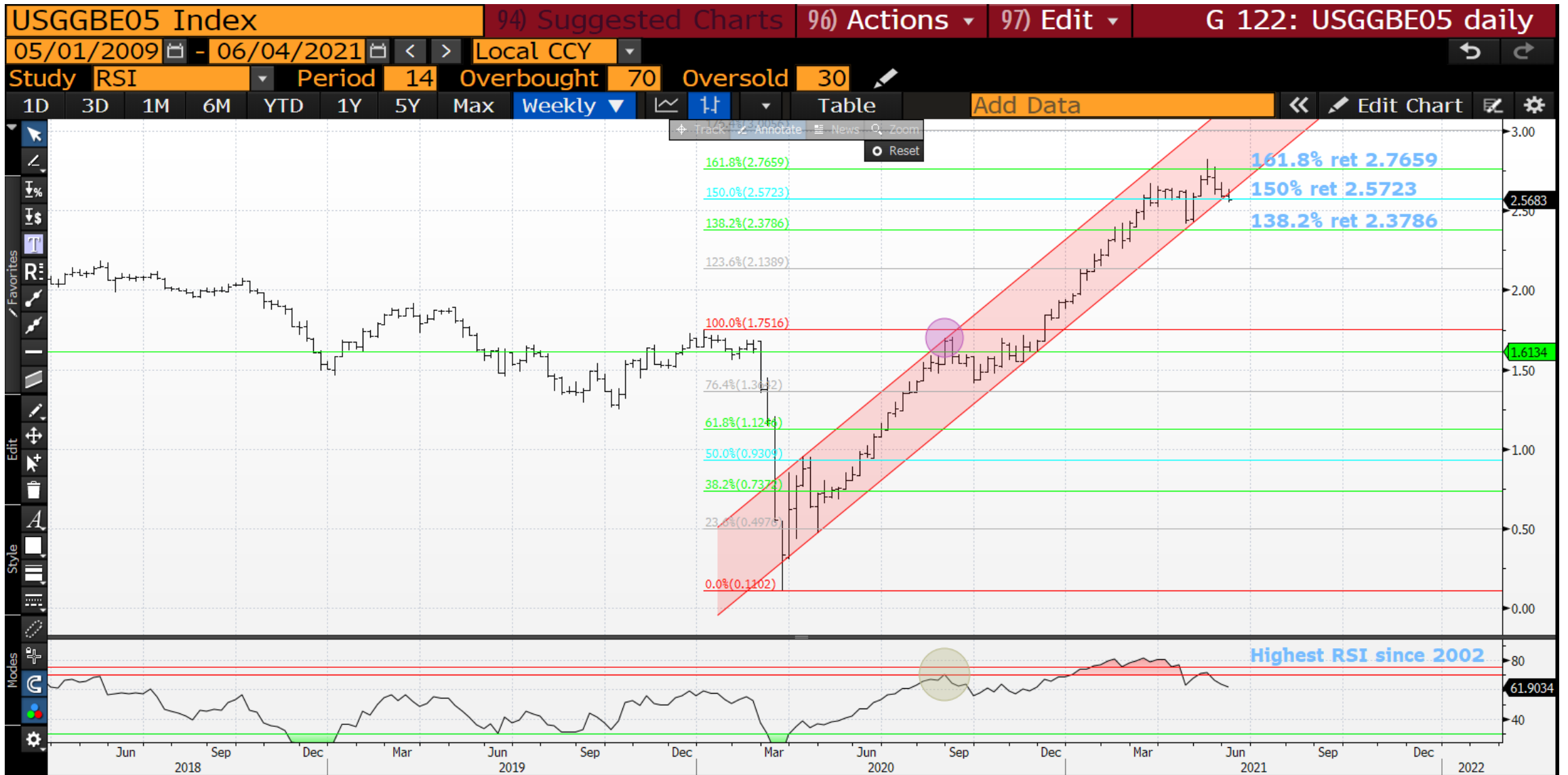
USGGBE10 daily : We have tested the 50 day moving average 2.4147, sub it will be a KILLER blow.



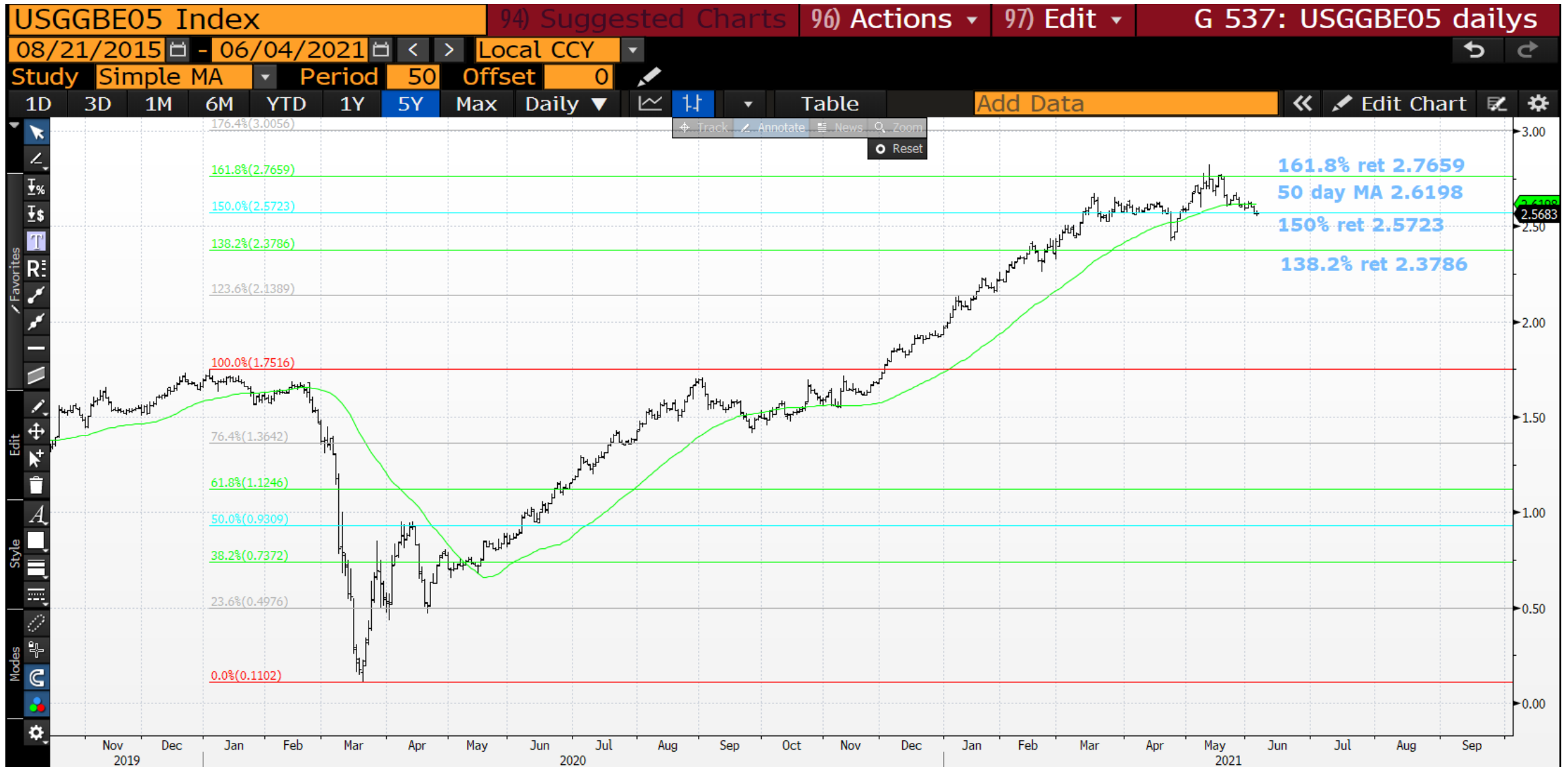
USGGBE05 monthly : This RSI is also exploring a NEW HISTORICAL dislocation as we HIT the 2008 high 2.7322! If we can continue to push lower it will form a major long-term top.



USGGBE05 weekly : This weekly chart has breached its channel, JUST! If we breach the 138.2% ret 2.3786 then its free fall time.



USGGBE05 daily : We have breached this 50 day moving average 2.6198, sub the 150% ret 2.5723 will be a huge help.



This research was prepared by Chris Williams. He is a self-employed contractor with Astor Ridge. A history of his research can be provided upon request in compliance with the European Commission's Market Abuse Regulation.

Astor Ridge takes no proprietary trading risk, has no market making facilities, and has no position in any security we discuss in this e-mail. The views in this e-mail are those of the author(s) and are subject to change, and Astor Ridge has no obligation to update its opinions or the information in this publication. If this e-mail contains recommendations, those recommendations reflect solely and exclusively those of the author, and such opinions were prepared independently of any other interests, including those of Astor Ridge and/or its affiliates.

This publication does not constitute personal investment advice or take into account the individual financial circumstances or objectives of the clients who receive it. The securities discussed herein may not be suitable for all investors. Astor Ridge recommends that investors independently evaluate each issuer, security or instrument discussed herein, and consult any independent advisors they believe necessary.

The value of and income from any investment may fluctuate from day to day as a result of changes in relevant economic markets (including changes in market liquidity). The information herein is not intended to predict actual results, which may differ substantially from those reflected. Past performance is not necessarily indicative of future results.

You should not use or disclose to any other person the contents of this research, nor take copies. This is not a representation or warranty and is not intended nor should it be taken to create any legal relations, contractual or otherwise. This research and any files transmitted with it are confidential, may be legally privileged, and are for the sole use of the intended recipient. Copyright in this research and any accompanying document created by Astor Ridge LLP is owned by Astor Ridge LLP.

Astor Ridge LLP is regulated by the Financial Conduct Authority (FCA): Registration Number 579287

Astor Ridge LLP is Registered in England and Wales with Companies House: Registration Number OC372185

Astor Ridge NA LLP is a member of FINRA/SIPC: CRD Number 282626

Astor Ridge NA LLP is Registered in England and Wales with Companies House: Registration Number OC401796