

****SPECIAL SINGLE STOCK PRESENTATION**** MANY SINGLE STOCKS CONTINUE FALL AND THE VOLUME SHOWS “ZERO” SIGN OF PANIC-DRAMA. THE LACK OF VOLUME ON MANY BIG BRAND NAMES IS A WORRY ESPECIALLY WHEN VIEWED ALONGSIDE, NETFLIX, PELTON AND PAYPAL. IT SEEMS PEOPLE HAVE GOOD ENTRY LEVELS BUT NO ATTEMPT HAS EVER BEEN MADE TO TAKE PROFITS, THIS SCENARIO COULD COST PEOPLE DEARLY.

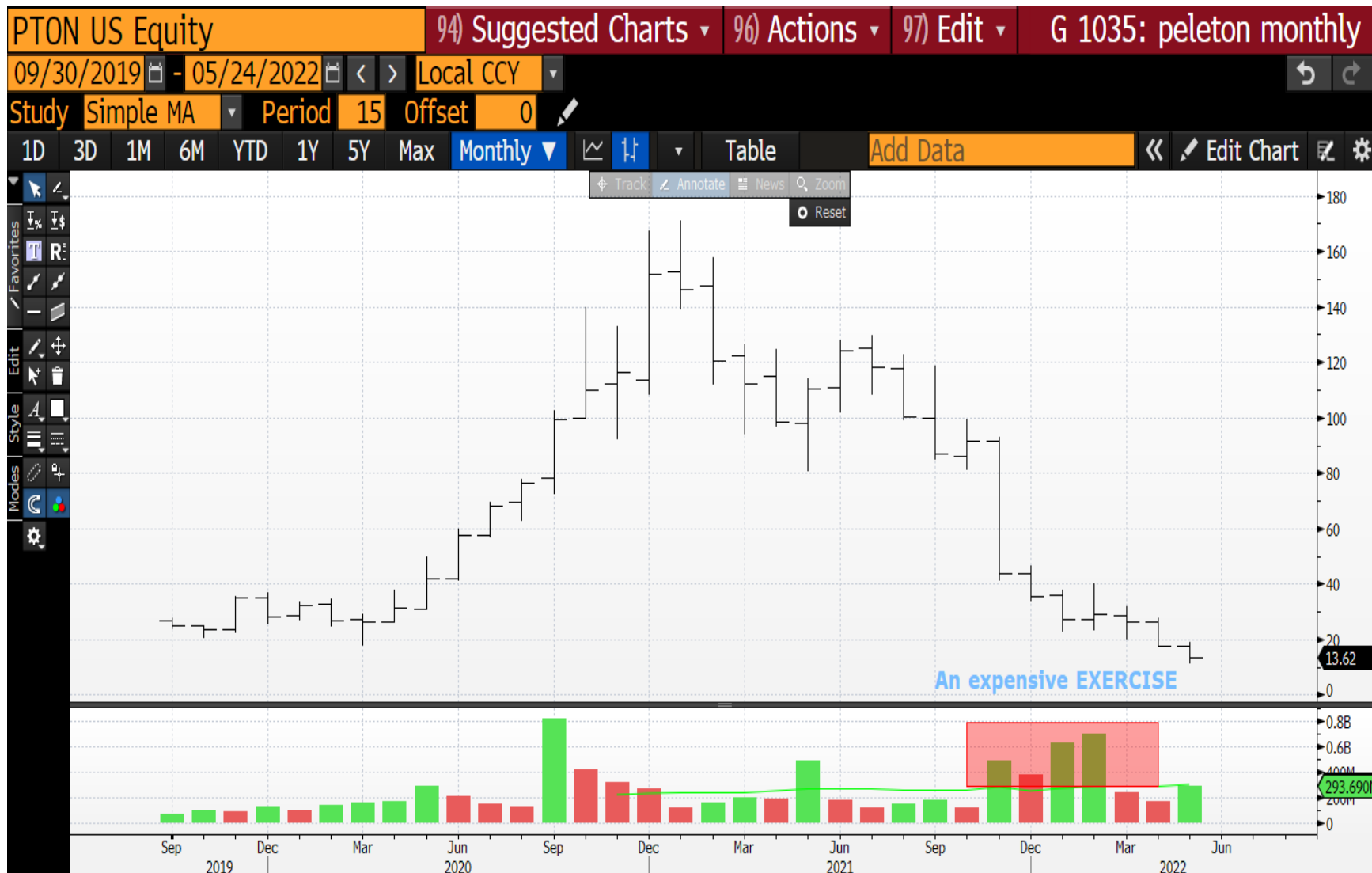
TECHNICALLY IT SEEMS “NO ONE” IS PROGRAMMED ANYMORE TO TAKE PROFITS, THE RALLY FROM 2008 LOWS HAS ENGRAINED A “BUY DIPS” MENTALITY AS HISTORICALLY THE MARKET ALWAYS RECOVERS.

ADMITTEDLY A LOT OF THE VOLUME IN THE STOCKS MAKING UP THIS PRESENTATION HAVE BEEN INITIATED AT THE INCEPTION-LOWS BUT AS NETFLIX ETC SHOW THERE IS A FAST ROUTE TO “ZERO”. THERE WILL BE NO VOLUME FOR AN OUT EVEN IF PEOPLE FINALLY WANT TO.

THIS SEEMS A MODERN PHENOMENA AND SUITS THE OVER ALL BULL RUN WE HAVE SEEN BUT IT COULD BECOME AND EXPONENTIAL “WASH OUT”. EVERYTHING IS LIKELY TO BE MAGNIFIED AND MIGHT BE THE PERFECT DRIVER FOR BOND YIELDS TO FALL.

ALSO A REMINDER THAT A LOT OF INVESTMENT IN THESE MARKETS IS VIA “FREE TO EXECUTE” UNREGULATED PLATFORMS THAT EXPLODED DURING THE “LOCK DOWN” PERIOD. COINBASE SOME 98 MILLION PARTICIPANTS FOR CRYPTO HAS ALREADY STATED PEOPLE MANY WONT SEE THEIR MONEY IF THEY CONTINUE TO OPERATE AT A LOSS.

PELTON monthly : This was a VERY EXPENSIVE LOCK DOWN special! The volume highlights most got out at the lows and presumably more still buying down here. This was a HIGH PROFILE name but what a FALL from grace. This should ring alarm bells?



NETFLIX monthly : Another SOLID name been around since 2002 but it seems NONE of the VOLUME buyers on the way up have EXITED. This is a major drop in anyone's book yet no PANIC or is it a LIQUIDITY issue? Agreed most volume "got in" at the lows in 2011-12 but NO WHERE from that point ONWARDS has ANYONE taken profits. THIS SHOULD CAUSE CONCERN!



COMCAST monthly : The more established firms seem a safer bet BUT yet again the VOLUMES are not increasing on a sell off? That said we are at KEY break levels. It still seems everyone is keen to HOLD but these can FALL as fast as others in this presentation.



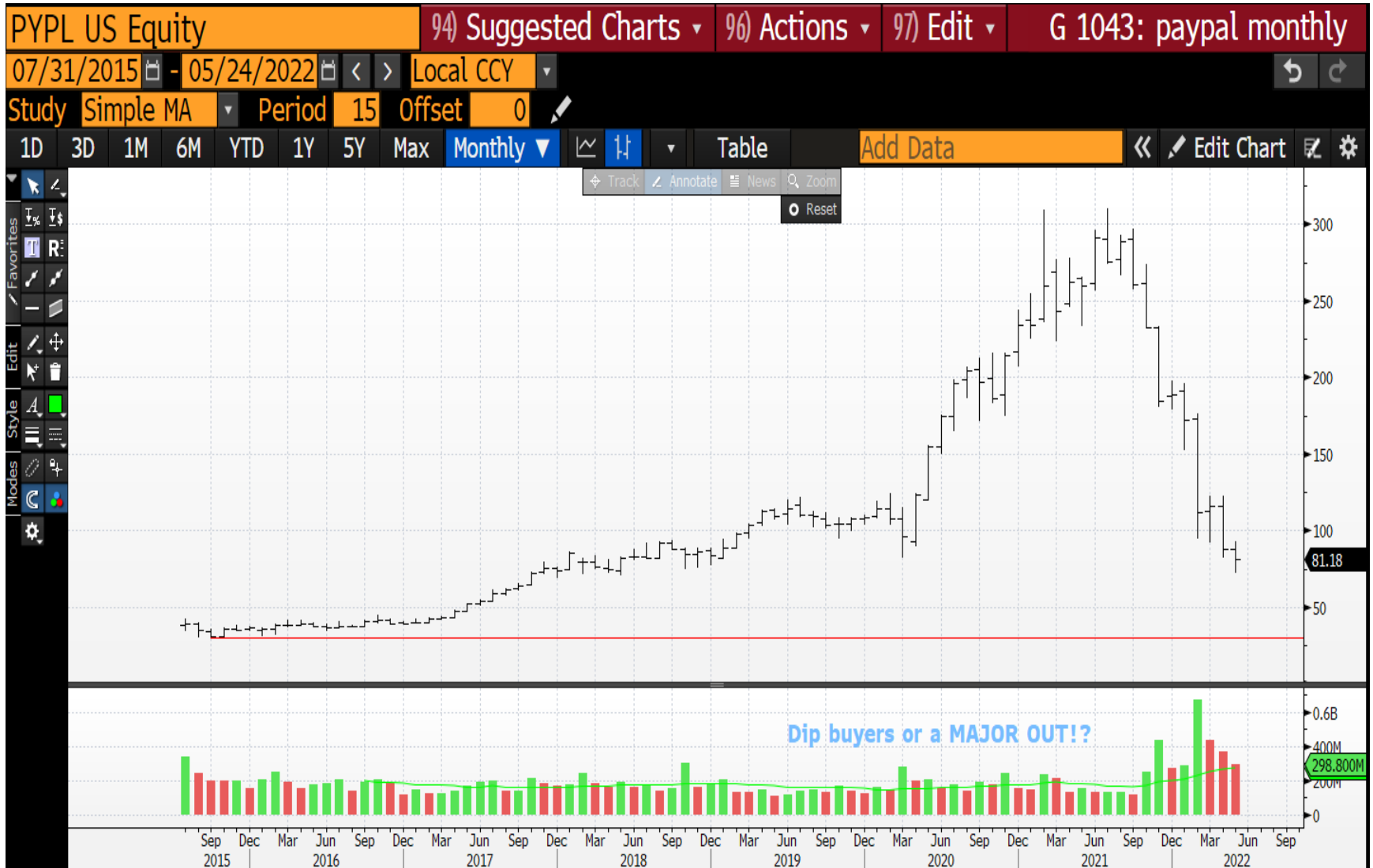
DISNEY monthly : An established company BUT am sure have been caught up in the “per month” subscription. Again it seems the APPETITE is BUY THE DIP as highlighted in 2020, not even the latest FREEFALL has spooked anyone VOLUME wise. If we breach the 61.8% ret 77.83 then most profits will have evaporated and the PANIC will start. Also read today the Disney Parks are becoming way too expensive!



AMAZON monthly : The danger with these ESTABLISHED stocks is the COMFORT ZONE, people are long at good levels and the business is diverse. The one BIG problem will be if MAJOR levels are breached and LIQUIDITY or the lack of will drive demand to EXIT? Despite the drastic FALL of late there has been NO PICK UP in VOLUME, a major worry.



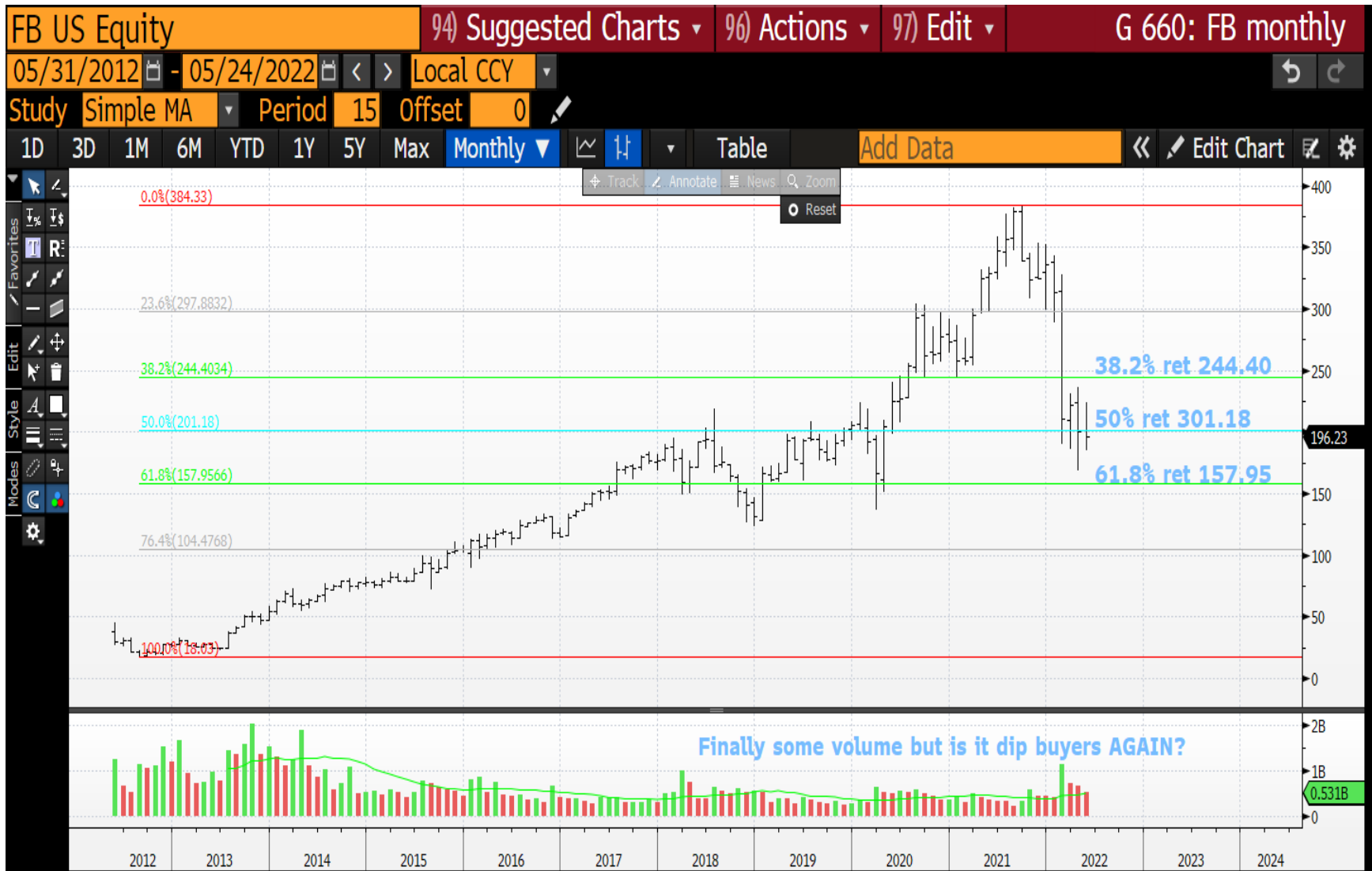
PAYPAL monthly : Another SHOCKER for an ESTABLISHED BRAND! This seems to be a PAINFUL OUT for many at the recent lows. Maybe a good example of TOO MUCH “buying the dip” similar to Peloton.



STARBUCKS monthly : Everyone will need coffee but THESE OAT MILK FROTHY HOT DECAF VANILLA SHOT LATTES (no offense) are getting expensive and no VOLUME is getting out! Am sure there are many more examples of well known brands poised for a RELOCATION. Very similar PATTERN to AMAZON, very good entry location but ZERO profit taking.



FACEBOOK monthly : Who would of bet FB would be here 3 years ago! They still remain unregulated platforms retrieving your data and lifestyle. Their time maybe up and it looks like NO ONE is keen to EXIT longs. Am sure the latest SPIKE in volume was DIP BUYERS. Sub the 61.8% ret 157..95 will be a killer blow.



TESLA monthly : They seem bullet proof and no one has been liquidating positions given the volume. Huge potential for a FREEFALL aided by ZERO volume selling.



TEXAS INST monthly : These established firms seem OK BUT we are approaching levels where people SHOULD consider position reduction as opposed to BUY THE DIP. Again no drama but that may change soon.



APPLE monthly : BULLET PROOF given the LONGS from 2008 have let NOTHING GO. Great entry point for many looking at the VOLUME in 2008-09 but as per the previous charts it can be a SWIFT fall from grace.



COSTCO monthly : Another established firm BUT LIKE many before TOPS are forming on NO VOLUME which is surely a CONCERN. NO volume at all so a content stock holder.



MICROSOFT monthly : ONE way traffic for years and no one is worried! No profit taking and no panic, YET.



This research was prepared by Chris Williams. He is a self-employed contractor with Astor Ridge. A history of his research can be provided upon request in compliance with the European Commission's Market Abuse Regulation.

Astor Ridge takes no proprietary trading risk, has no market making facilities, and has no position in any security we discuss in this e-mail. The views in this e-mail are those of the author(s) and are subject to change, and Astor Ridge has no obligation to update its opinions or the information in this publication. If this e-mail contains recommendations, those recommendations reflect solely and exclusively those of the author, and such opinions were prepared independently of any other interests, including those of Astor Ridge and/or its affiliates.

This publication does not constitute personal investment advice or take into account the individual financial circumstances or objectives of the clients who receive it. The securities discussed herein may not be suitable for all investors. Astor Ridge recommends that investors independently evaluate each issuer, security or instrument discussed herein, and consult any independent advisors they believe necessary.

The value of and income from any investment may fluctuate from day to day as a result of changes in relevant economic markets (including changes in market liquidity). The information herein is not intended to predict actual results, which may differ substantially from those reflected. Past performance is not necessarily indicative of future results.

You should not use or disclose to any other person the contents of this research, nor take copies. This is not a representation or warranty and is not intended nor should it be taken to create any legal relations, contractual or otherwise. This research and any files transmitted with it are confidential, may be legally privileged, and are for the sole use of the intended recipient. Copyright in this research and any accompanying document created by Astor Ridge LLP is owned by Astor Ridge LLP.

Astor Ridge LLP is regulated by the Financial Conduct Authority (FCA): Registration Number 579287

Astor Ridge LLP is Registered in England and Wales with Companies House: Registration Number OC372185

Astor Ridge NA LLP is a member of FINRA/SIPC: CRD Number 282626

Astor Ridge NA LLP is Registered in England and Wales with Companies House: Registration Number OC401796